

Sunrise Peak
5,814

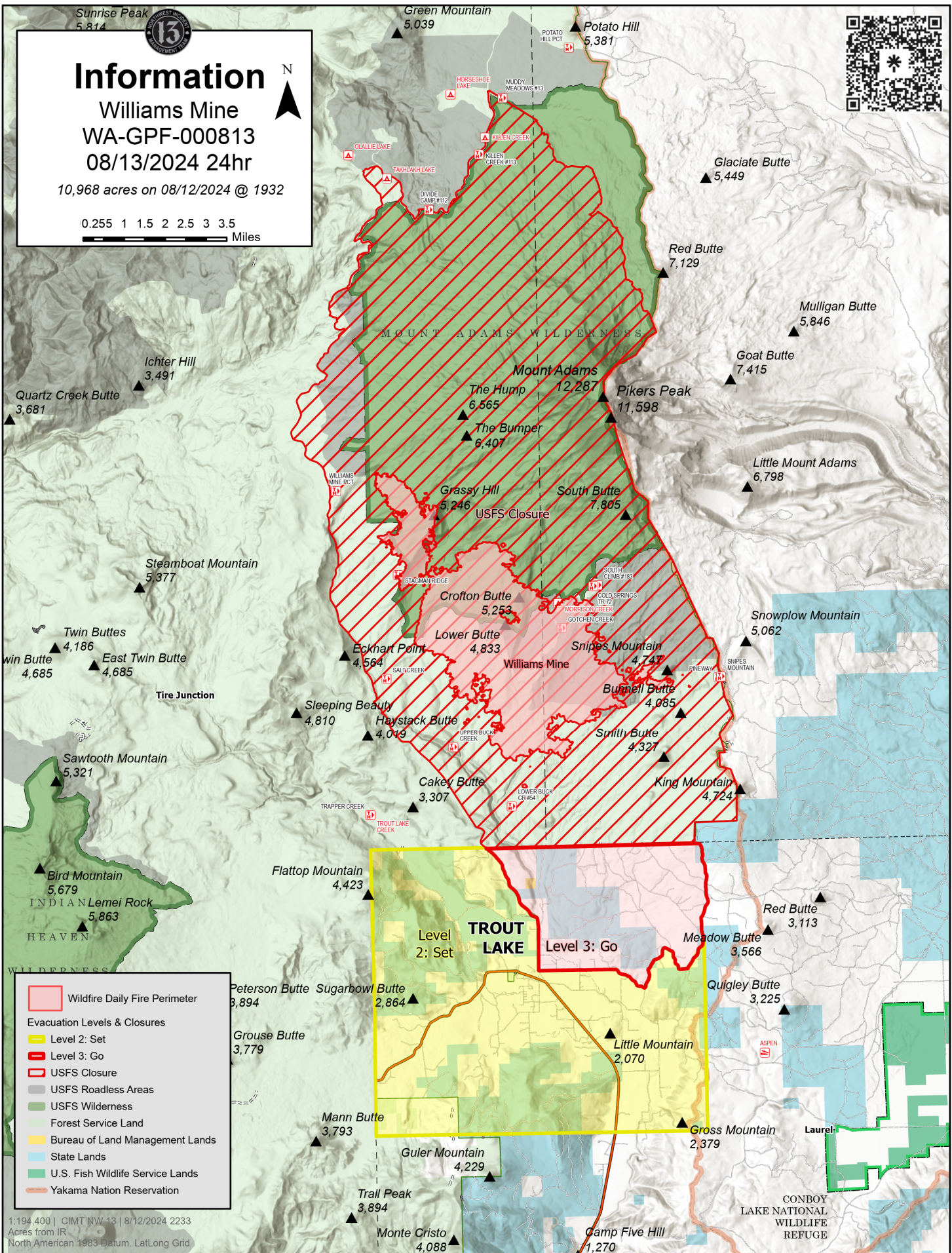


Information

Williams Mine
WA-GPF-000813
08/13/2024 24hr

10,968 acres on 08/12/2024 @ 1932

0.255 1 1.5 2 2.5 3 3.5
Miles



Wildfire Daily Fire Perimeter

Evacuation Levels & Closures

- Level 2: Set
- Level 3: Go
- USFS Closure
- USFS Roadless Areas
- USFS Wilderness
- Forest Service Land
- Bureau of Land Management Lands
- State Lands
- U.S. Fish Wildlife Service Lands
- Yakama Nation Reservation

1:194,400 | GIMT NW 13 | 8/12/2024 2233
Acres from IR
North American 1983 Datum, Lat,Long Grid

CONBOY
LAKE NATIONAL
WILDLIFE
REFUGE