



Smoke Outlook

Central Idaho

8/29 - 8/30

Issued by [Wildland Fire Air Quality Response Program](#) on August 29, 2024 at 08:26 AM MDT

Special Statement

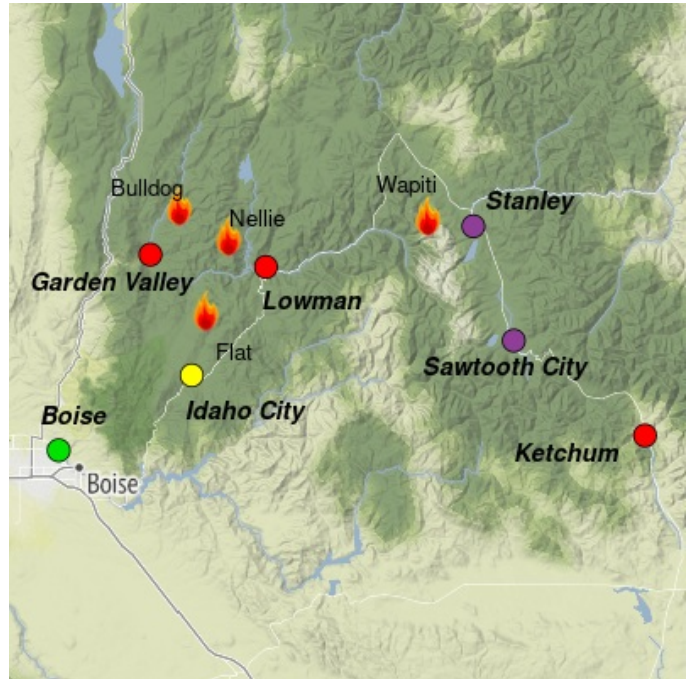
AIR QUALITY ALERT issued by Idaho DEQ.

Fire

The **Wapiti Fire** is at 89,714 acres and the **Middle Fork Complex** is at 52,974 acres. Adverse and challenging fire behavior continues today with near-critical fire conditions. On the Wapiti Fire, expect group torching, ground fire runs, and long-distance spotting. Generally and strong gusty winds from the west will drive fire to the east and north by runs, crown fire, and spotting. Active fire weather and fire activity will persist throughout the week.

Smoke

Heaviest smoke impacts will be in valleys and low-lying areas near the immediate vicinity of the fires. Moderate-to-heavy smoke impacts will be along HWY-75 from Stanley to Ketchum and the SH-17 corridor from Crouch/Garden Valley to Lowman. Winds from the west today will disperse smoke across eastern portions of the forecast area. Smoke impacts overnight into tomorrow morning will be highly dependent on today's fire activity. Expect continued smoke throughout the week as warm and dry weather continues.



Daily AQI Forecast* for Thursday

Station	Yesterday			Wed 8/28	Comment for Today -- Thu, Aug 29	Forecast*	
	hourly					Thu 8/29	Fri 8/30
Boise	6a	noon	6p	●	GOOD air quality this week with wind conditions moving smoke away from the city.	●	●
Idaho City	[Bar chart showing AQI fluctuations]			●	Generally MODERATE AQ conditions, with periods of USG/UNHEALTHY possible.	●	●
Lowman	[Bar chart showing AQI fluctuations]			●	Pattern of UNHEALTHY AQ in the morning, and GOOD/MOD AQ in the evening returns.	●	●
Garden Valley	[Bar chart showing AQI fluctuations]			●	Generally USG/UNHEALTHY during the days, with MODERATE/GOOD in the evenings.	●	●
Stanley	[Bar chart showing AQI fluctuations]			●	VERY UNHEALTHY to HAZARDOUS AQ expected as favorable fire conditions persist.	●	●
Sawtooth City	No hourly data			●	V UNHEALTHY/HAZARDOUS AQ today, with periods of USG/UNHEALTHY in the evening.	●	●
Ketchum	[Bar chart showing AQI fluctuations]			●	Morning smoke cleans out, but generally VERY UNHEALTHY conditions remain.	●	●

Issued Aug 29, 2024 by Kati Chachere ARAt (cchachere@blm.gov)

Air Quality Index (AQI)	Actions to Protect Yourself
● Good	None
● Moderate	Unusually sensitive individuals should consider limiting prolonged or heavy exertion.
● USG	People within Sensitive Groups* should reduce prolonged or heavy outdoor exertion.
● Unhealthy	People within Sensitive Groups* should avoid all physical outdoor activity.
● Very Unhealthy	Everyone should avoid prolonged or heavy exertion.
● Hazardous	Everyone should avoid any outdoor activity.

***Disclaimer:** This forecast is based on fine particulates only; ozone is not included. Forecasts may be wrong; use at own risk. Use caution as conditions can change quickly. See your health professional as needed. Smoke sensitive groups should take appropriate precautions.

Additional Links

[Middle Fork Complex \(Bulldog, Nellie\)](#) -- <https://inciweb.wildfire.gov/incidentinformation/idbof-middle-fork-complex-fire-bulldog-nellie-anderson>
[Wapiti Fire](#) -- <https://inciweb.wildfire.gov/incident-information/idbof-wapiti-fire>

[Flat Fire](#) -- <https://inciweb.wildfire.gov/incident-information/idids-2024-flat>
[IDEQ Smoke Blog](#) -- <https://idsmoke.blogspot.com>



Issued by Interagency Wildland Fire Air Quality Response Program -- www.wildlandfiresmoke.net
Central Idaho Updates -- <https://outlooks.wildlandfiresmoke.net/outlook/d58217e9>
*Smoke and Health Info -- www.airnow.gov/air-quality-and-health