



# Smoke Outlook

## NE Oregon Multiple Fires

8/02 - 8/03

Issued by [Wildland Fire Air Quality Response Program](#) on August 02, 2024 at 07:25 AM PDT

### Special Statement

...Air Quality Alert issued by Oregon DEQ for Harney and Malheur Counties... ..Excessive Heat Warning in effect from 11:00 AM until 11:00 PM... ..Red Flag Warning today for Hot, Dry, and Unstable Fire Weather conditions...

### Fire

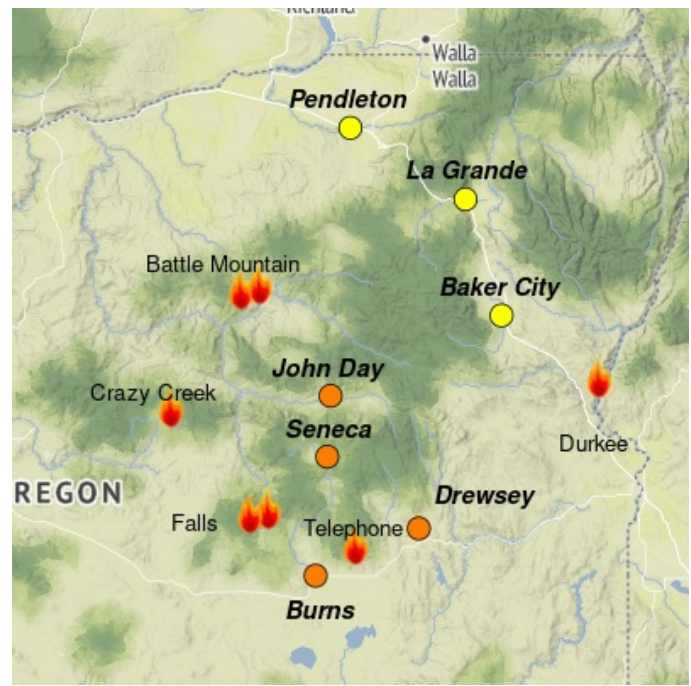
There are multiple fires affecting the forecast area. For more information on these incidents, please visit [Inciweb](#).

### Smoke

Smoke from fires within Oregon, and including the Park Fire in N. California will degrade Air Quality into the weekend. Hot dry weather along with light wind will keep smoke generally in place with only limited improvements during the afternoon. The poorest air quality will occur in communities closest to active fire, and in valley locations where smoke will accumulate overnights. Refer to the interactive forecast for specifics.

### Additional Smoke Outlooks

Smoke Outlooks for adjacent areas are posted on the [Fire and Smoke Map](#) .



Daily AQI Forecast\* for Friday

Station	Yesterday hourly			Thu 8/01	Comment for Today -- Fri, Aug 02	Forecast*	
	6a	noon	6p			Fri 8/02	Sat 8/03
Seneca	No hourly data				UNHEALTHY to UNHEALTHY FOR SENSITIVE GROUP due to weather and more fire activity	●	●
Burns				●	Hot Dry Weather and Light Winds to Keep Smoke in Area	●	●
John Day				●	UNHEALTHY FOR SENSITIVE GROUPS AQ into Saturday with Weekend Improvement	●	●
Drewsey	No hourly data				MODERATE to UNHEALTHY FOR SENSITIVE GROUPS due to Wind and Fire Activity	●	●
Baker City				●	Hazy skies and MODERATE AQ conditions expected again today.	●	●
Pendleton				●	MODERATE AQ today with periods GOOD AQ by this weekend	●	●
La Grande				●	Continuing MODERATE AQ forecast into Weekend	●	●

Issued Aug 02, 2024 by John Pendergrast, ARA pendergrast01@gmail.com

Air Quality Index (AQI)	Actions to Protect Yourself
● Good	None
● Moderate	Unusually sensitive individuals should consider limiting prolonged or heavy exertion.
● USG	People within Sensitive Groups* should <b>reduce</b> prolonged or heavy outdoor exertion.
● Unhealthy	People within Sensitive Groups* should <b>avoid all</b> physical outdoor activity.
● Very Unhealthy	Everyone should avoid prolonged or heavy exertion.
● Hazardous	Everyone should avoid any outdoor activity.

**\*Disclaimer:** This forecast is based on fine particulates only; ozone is not included. Forecasts may be wrong; use at own risk. Use caution as conditions can change quickly. See your health professional as needed. Smoke sensitive groups should take appropriate precautions.

### Additional Links

- [Oregon Health Authority- Wildfires & Smoke --](#)
- [Oregon Department of Environmental Quality- Air Quality --](#)
- <https://www.oregon.gov/oha/ph/preparedness/prepare/pages/prepareforwildfire.aspx>
- <https://www.oregon.gov/deq/airquality/pages/airquality.aspx>
- [Oregon Health Authority - Preventing Heat-related Illnesses --](#)
- [https://www.oregon.gov/oha/ph/preparedness/prepare/pages/prepareforextremeheat.aspx?utm\\_source=OHA&utm\\_medium=egov\\_redirect&utm\\_campaign=https%3A%2F%2Fwww.oregon.gov%2Fheat](https://www.oregon.gov/oha/ph/preparedness/prepare/pages/prepareforextremeheat.aspx?utm_source=OHA&utm_medium=egov_redirect&utm_campaign=https%3A%2F%2Fwww.oregon.gov%2Fheat)