



Smoke Outlook

Mid Columbia Gorge Whisky Creek Fire

8/08 - 8/09

Issued by [Wildland Fire Air Quality Response Program](#) on August 08, 2024 at 08:34 AM PDT

Special Statement

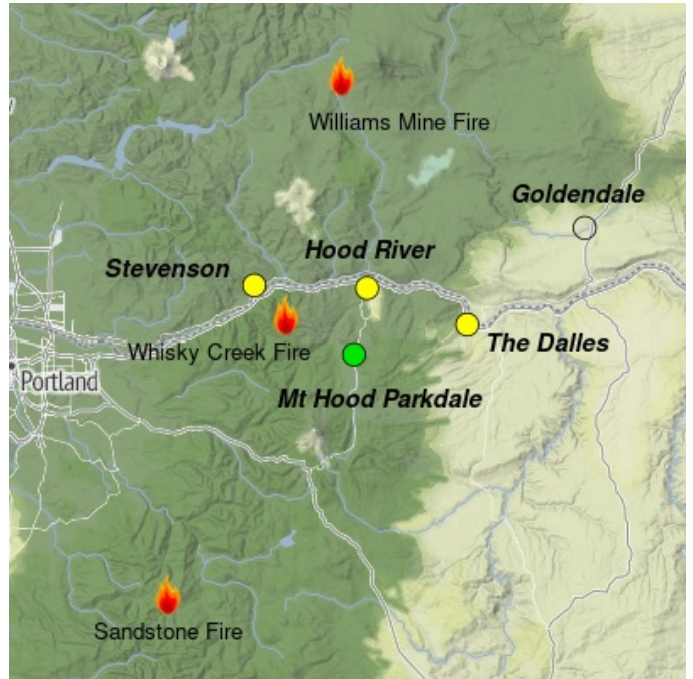
An Air Quality Advisory is in effect until 8 PM PDT Thursday, August 8 due to smoke and ozone. Pollutants can cause burning eyes, itchy throat, and other health problems. More information can be found at www.swcleanair.gov and www.oregon.gov/DEQ.

Fire

Crews continue to construct indirect handlines while helicopters with buckets drop water directly on active fire. Today, an east wind and temperatures in the upper 80s are expected on the Whisky Creek Fire. The Whisky Creek Fire is currently 1447 acres.

Smoke

On Thursday, east winds will push smoke away from the Columbia Gorge area. Smoke pooling is expected during overnight hours, increasing smoke concentrations in localized areas. West winds will return on Friday, and air quality in general will be between Good to Moderate.



Daily AQI Forecast* for Thursday

Station	Yesterday			Wed 8/07	Forecast*	Comment for Today -- Thu, Aug 08	Thu 8/08	Fri 8/09
	hourly							
	6a	noon	6p					
Hood River	[AQI bars]			●	Air quality is expected to be Good to Moderate.	●	●	
Stevenson	[AQI bars]			●	Air quality is expected to be Good to Moderate.	●	●	
Mt Hood Parkdale	[AQI bars]			●	Good to Moderate air quality is expected	●	●	
The Dalles	[AQI bars]			●	Mostly Moderate air quality today.	●	●	
Goldendale	[AQI bars]			●	NA			

Issued Aug 08, 2024 by Aaron Piña (202-603-2292)

Air Quality Index (AQI)	Actions to Protect Yourself
● Good	None
● Moderate	Unusually sensitive individuals should consider limiting prolonged or heavy exertion.
● USG	People within Sensitive Groups* should reduce prolonged or heavy outdoor exertion.
● Unhealthy	People within Sensitive Groups* should avoid all physical outdoor activity.
● Very Unhealthy	Everyone should avoid prolonged or heavy exertion.
● Hazardous	Everyone should avoid any outdoor activity.

***Disclaimer:** This forecast is based on fine particulates only; ozone is not included. Forecasts may be wrong; use at own risk. Use caution as conditions can change quickly. See your health professional as needed. Smoke sensitive groups should take appropriate precautions.

Additional Links

[Oregon DEQ](http://www.oregon.gov/DEQ) -- <http://www.oregon.gov/DEQ>



Issued by Interagency Wildland Fire Air Quality Response Program -- www.wildlandfiresmoke.net

Mid Columbia Gorge Updates -- <https://outlooks.wildlandfiresmoke.net/outlook/104f92cf>

*Smoke and Health Info -- www.airnow.gov/air-quality-and-health