



# Smoke Outlook

## Mid Columbia Gorge Whisky Creek Fire

8/07 - 8/08

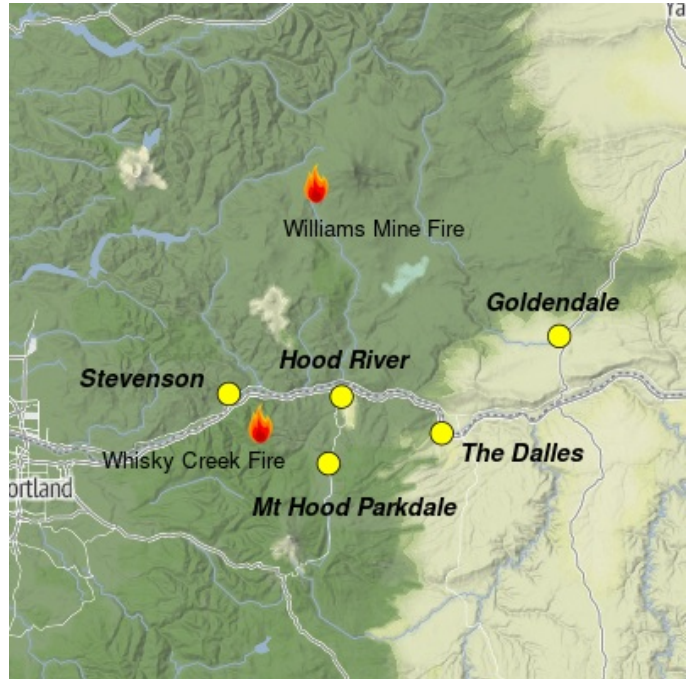
Issued by [Wildland Fire Air Quality Response Program](#) on August 07, 2024 at 08:54 AM PDT

### Fire

Crews continue to construct indirect handlines while helicopters with buckets drop water directly on active fire. Today, clear sky, variable wind, and temperatures in the upper 80s are expected on the Whisky Creek Fire. Heavy smoke from the Williams Mine fire near Mt Adams could impact flight operations. The Whisky Creek Fire is currently 1335 acres.

### Smoke

A shift in winds will bring smoke from the Williams Mine Fire to the Columbia Gorge area. Winds will lighten and become terrain-driven, and air quality in general will be between Moderate and Unhealthy for Sensitive Groups.



Daily AQI Forecast\* for Wednesday

Station	Yesterday			Tue 8/06	Comment for Today -- Wed, Aug 07	Forecast*	
	6a	noon	6p			Wed 8/07	Thu 8/08
Goldendale	Grey	Green	Green	Green	Mostly Moderate air quality is expected from Williams Mine Fire smoke.	Yellow	Green
Hood River	Grey	Green	Green	Green	Smoke from the Williams Mine Fire is expected to affect the area.	Yellow	Yellow
Stevenson	Grey	Green	Green	Green	Air quality is expected to degrade during a period of more northerly winds.	Yellow	Yellow
Mt Hood Parkdale	Grey	Green	Green	Green	In general, Good to Moderate air quality is expected.	Yellow	Green
The Dalles	Grey	Green	Yellow	Yellow	Air quality of Moderate to Unhealthy for Sensitive Groups with northerly winds	Yellow	Yellow

Issued Aug 07, 2024 by Aaron Piña (202-603-2292)

Air Quality Index (AQI)	Actions to Protect Yourself
Green Good	None
Yellow Moderate	Unusually sensitive individuals should consider limiting prolonged or heavy exertion.
Orange USG	People within Sensitive Groups* should <b>reduce</b> prolonged or heavy outdoor exertion.
Red Unhealthy	People within Sensitive Groups* should <b>avoid all</b> physical outdoor activity.
Purple Very Unhealthy	Everyone should avoid prolonged or heavy exertion.
Brown Hazardous	Everyone should avoid any outdoor activity.

**\*Disclaimer:** This forecast is based on fine particulates only; ozone is not included. Forecasts may be wrong; use at own risk. Use caution as conditions can change quickly. See your health professional as needed. Smoke sensitive groups should take appropriate precautions.



Issued by Interagency Wildland Fire Air Quality Response Program -- [www.wildlandfiresmoke.net](http://www.wildlandfiresmoke.net)  
 Mid Columbia Gorge Updates -- <https://outlooks.wildlandfiresmoke.net/outlook/104f92cf>  
 \*Smoke and Health Info -- [www.airnow.gov/air-quality-and-health](http://www.airnow.gov/air-quality-and-health)