



Soil Burn Severity Map - Shelly Fire

Shelly BAER

Soil Burn Severity



High soil burn severity:
All or nearly all of the pre-fire ground cover and surface organic matter (litter, duff, and fine roots) is generally consumed, and charring may be visible on larger roots. Soil is often gray, orange, or reddish at the ground surface where large fuels were concentrated and consumed.



Moderate soil burn severity:
Up to 80 percent of the pre-fire ground cover (litter and ground fuels) may be consumed but generally not all of it. There may be potential for recruitment of effective ground cover from scorched needles or leaves remaining in the canopy that will soon fall to the ground. Soil structure is generally unchanged.

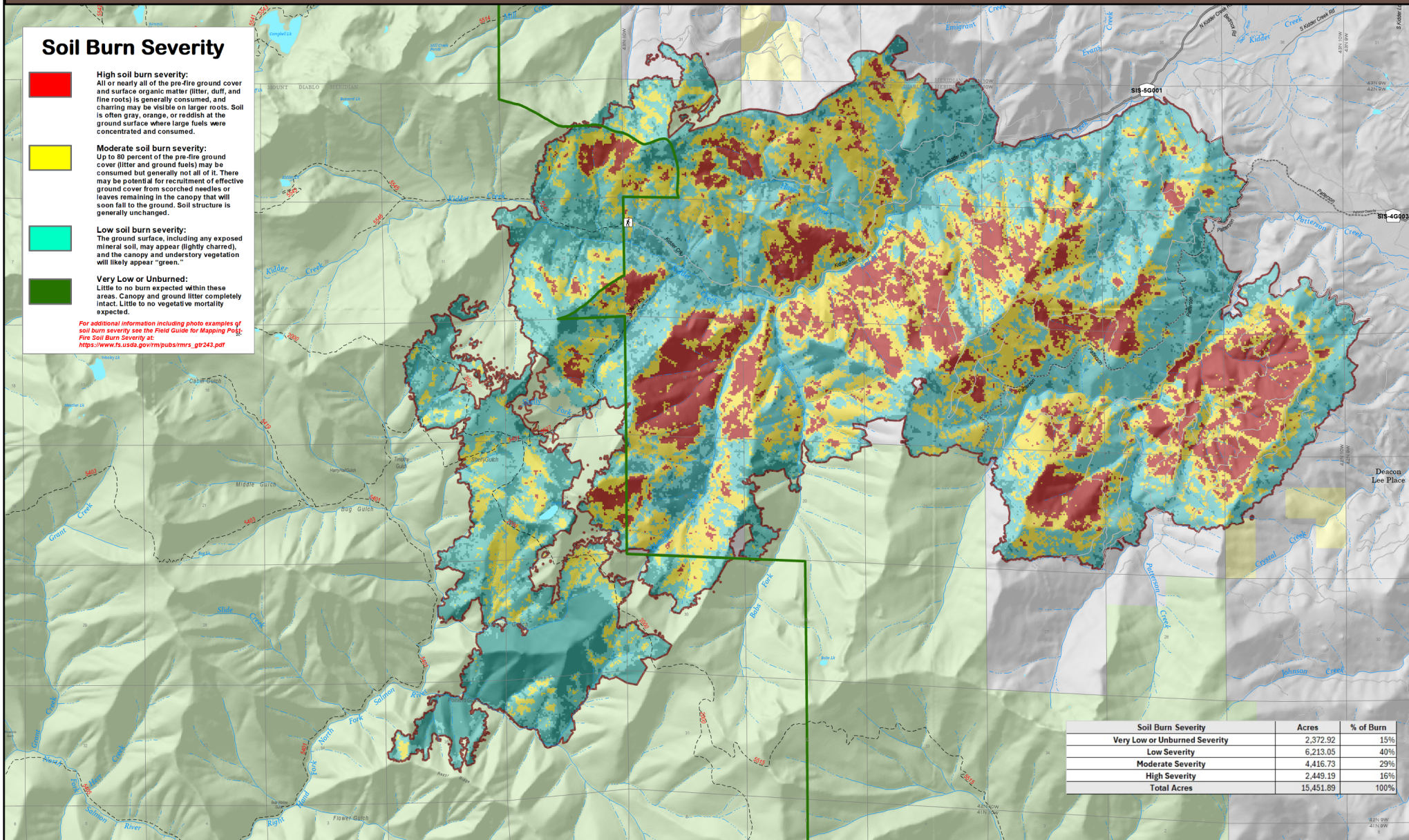


Low soil burn severity:
The ground surface, including any exposed mineral soil, may appear (lightly charred), and the canopy and understory vegetation will likely appear "green."

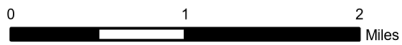


Very Low or Unburned:
Little to no burn expected within these areas. Canopy and ground litter completely intact. Little to no vegetative mortality expected.

For additional information including photo examples of soil burn severity see the Field Guide for Mapping Post-Fire Soil Burn Severity at: https://www.fs.usda.gov/mpubs/vrms_gtr243.pdf



Soil Burn Severity	Acres	% of Burn
Very Low or Unburned Severity	2,372.92	15%
Low Severity	6,213.05	40%
Moderate Severity	4,416.73	29%
High Severity	2,449.19	16%
Total Acres	15,451.89	100%



Fire Perimeter



Non-Motorized Trail



Trailhead



Wilderness



National Forest



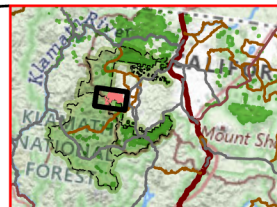
BLM



Private/Undetermined



California
Siskiyou County



Disclaimer:

This is a product of BAER rapid assessment. Further information concerning the accuracy and appropriate uses of this data may be obtained from the USDA Forest Service. The Forest Service, makes no warranty, expressed or implied, including the warranties of merchantability and fitness for a particular purpose, nor assumes any legal liability or responsibility for the accuracy, reliability, completeness or utility of these geospatial data, or for the improper or incorrect use of these geospatial data. These geospatial data and related maps or graphics are not legal documents and are not intended to be used as such. The data and maps may not be used to determine title, ownership, legal descriptions, boundaries, legal jurisdiction, or restrictions that may be in place on either public or private land. Natural hazards may or may not be depicted on the data and maps, and users should exercise due caution. The data is dynamic and may change over time. The user is responsible to verify the limitations of the geospatial data and to use the data accordingly.