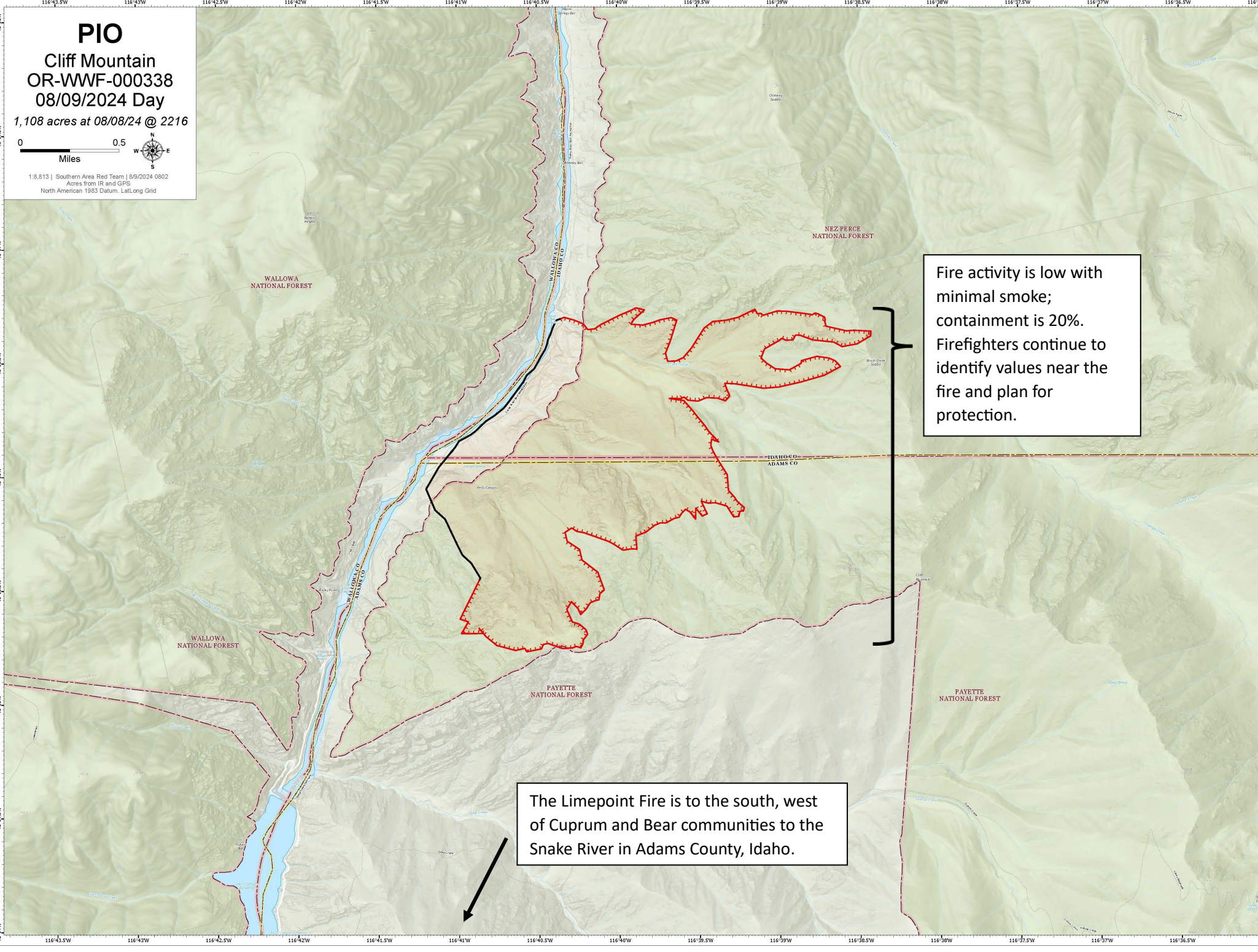


**PIO**  
Cliff Mountain  
OR-VWF-000338  
08/09/2024 Day  
1,108 acres at 08/08/24 @ 2216

0 0.5 Miles

1:8,813 | Southern Area Red Team | 8/9/2024 0802  
Acres from IR and GPS  
North American 1983 Datum, Lullong Grid



Fire activity is low with minimal smoke; containment is 20%. Firefighters continue to identify values near the fire and plan for protection.

The Limepoint Fire is to the south, west of Cuprum and Bear communities to the Snake River in Adams County, Idaho.