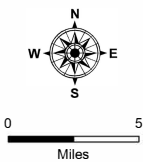


Public Information Map

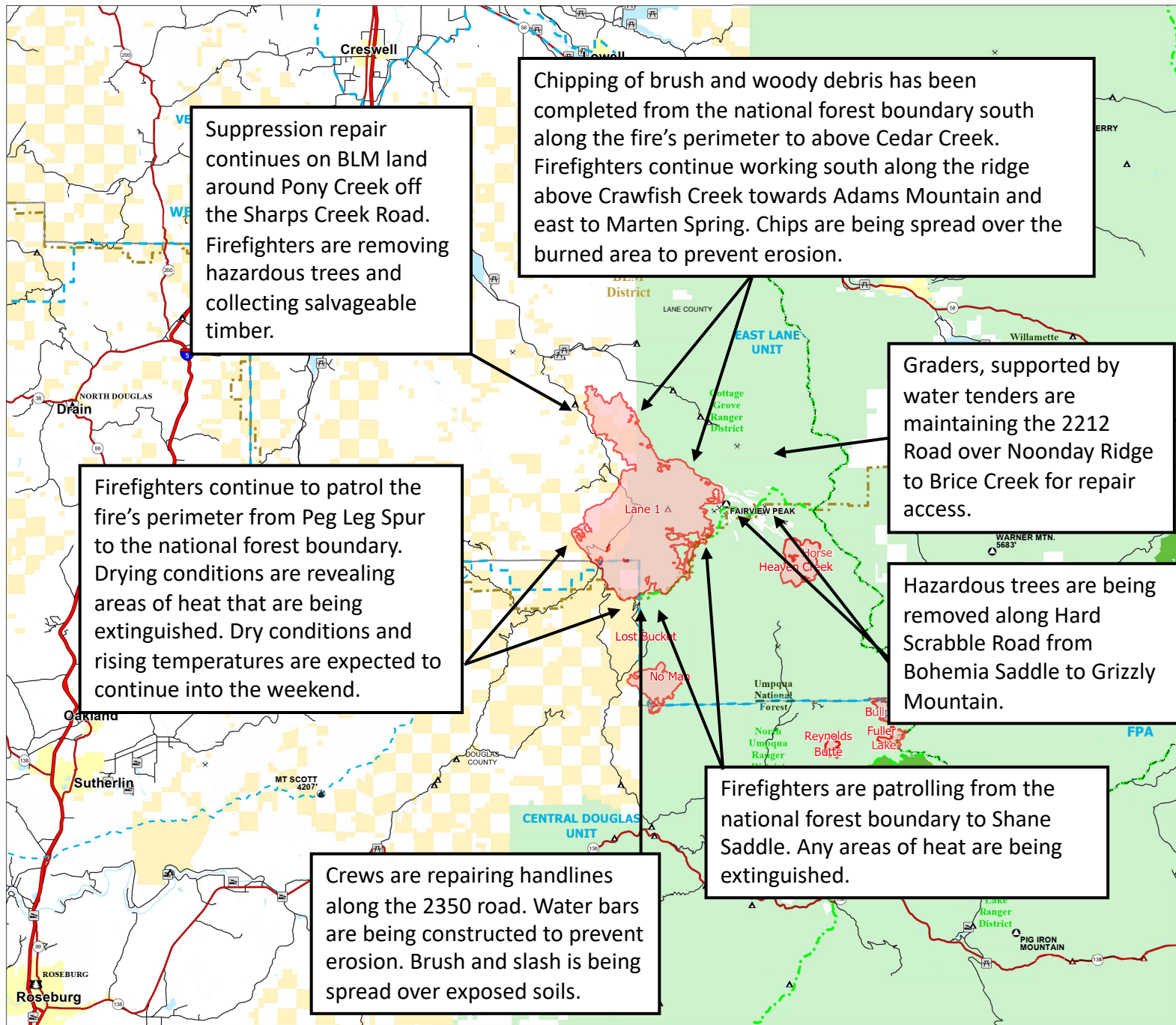
Cottage Grove - Lane 1
OR-771S-000028

25,267 acres on 08/25/2024 @ 00:40

- Wildfire Daily Fire Perimeter
- Federal
- State
- Mine
- Boat Ramp
- Campsite
- Day Use Area
- ODF District Office
- ODF Unit Office/Unit
- Interstate
- Federal and State Highway
- Arterial Road
- ODF District Boundary
- ODF Unit Boundary
- USFS Administrative and Ranger District
- USFS Ranger District
- BLM District Boundary
- County Boundary
- Waterbodies
- Wilderness Area
- United States Bureau of Land Management
- United States Forest Service
- City Limit



1:200,000 | AK IMT | 8/24/2024 2303
Acres from IR
North American 1983 Datum, Lat,Long Grid



Suppression repair continues on BLM land around Pony Creek off the Sharps Creek Road. Firefighters are removing hazardous trees and collecting salvageable timber.

Chipping of brush and woody debris has been completed from the national forest boundary south along the fire's perimeter to above Cedar Creek. Firefighters continue working south along the ridge above Crawfish Creek towards Adams Mountain and east to Marten Spring. Chips are being spread over the burned area to prevent erosion.

Graders, supported by water tenders are maintaining the 2212 Road over Noonday Ridge to Brice Creek for repair access.

Firefighters continue to patrol the fire's perimeter from Peg Leg Spur to the national forest boundary. Drying conditions are revealing areas of heat that are being extinguished. Dry conditions and rising temperatures are expected to continue into the weekend.

Hazardous trees are being removed along Hard Scrabble Road from Bohemia Saddle to Grizzly Mountain.

Firefighters are patrolling from the national forest boundary to Shane Saddle. Any areas of heat are being extinguished.

Crews are repairing handlines along the 2350 road. Water bars are being constructed to prevent erosion. Brush and slash is being spread over exposed soils.