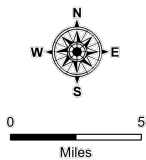


Public Information Map

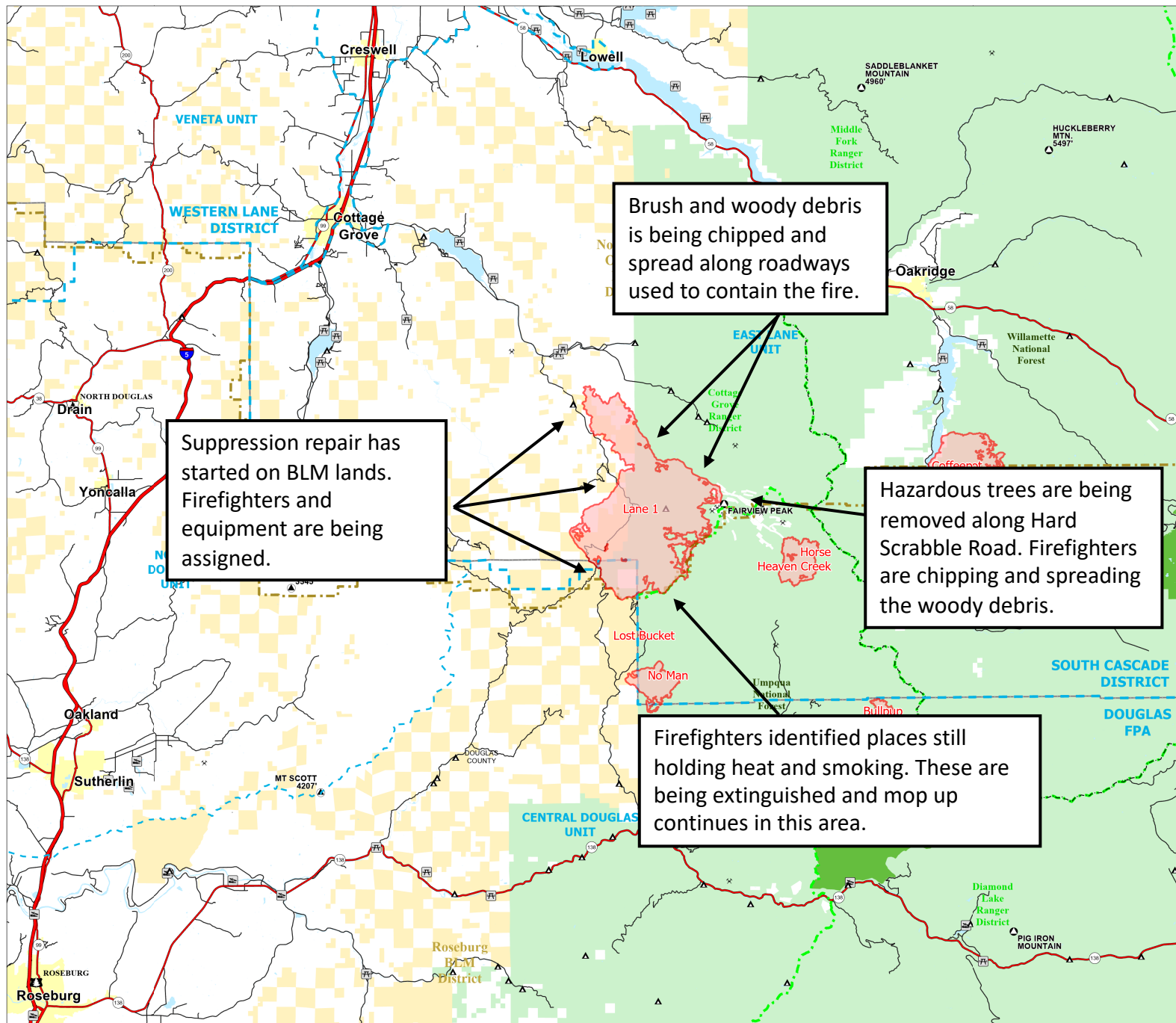
Cottage Grove - Lane 1
OR-771S-00028

25,265 acres as of 08/20/2024 @ 22:18

- Wildfire Daily Fire Perimeter
- Federal
- State
- Mine
- Boat Ramp
- Campsite
- Day Use Area
- ODF District Office
- ODF Unit Office/Unit
- Interstate
- Federal and State Highway
- Arterial Road
- ODF District Boundary
- ODF Unit Boundary
- USFS Administrative and Ranger District
- USFS Ranger District
- BLM District Boundary
- County Boundary
- Waterbodies
- Wilderness Area
- United States Bureau of Land Management
- United States Forest Service
- City Limit



1:200,000 | AK IMT | 8/24/2024 2303
Acres from IR
North American 1983 Datum, Lat,Long Grid



Suppression repair has started on BLM lands. Firefighters and equipment are being assigned.

Brush and woody debris is being chipped and spread along roadways used to contain the fire.

Hazardous trees are being removed along Hard Scrabble Road. Firefighters are chipping and spreading the woody debris.

Firefighters identified places still holding heat and smoking. These are being extinguished and mop up continues in this area.