

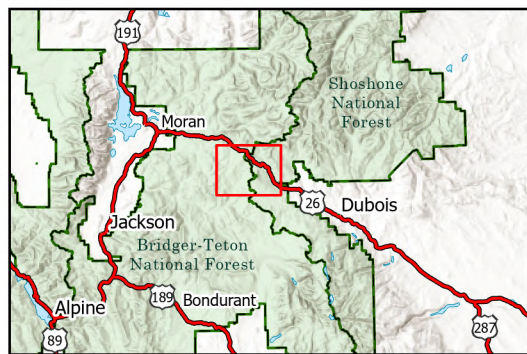
FISH CREEK

AUGUST 21, 2024

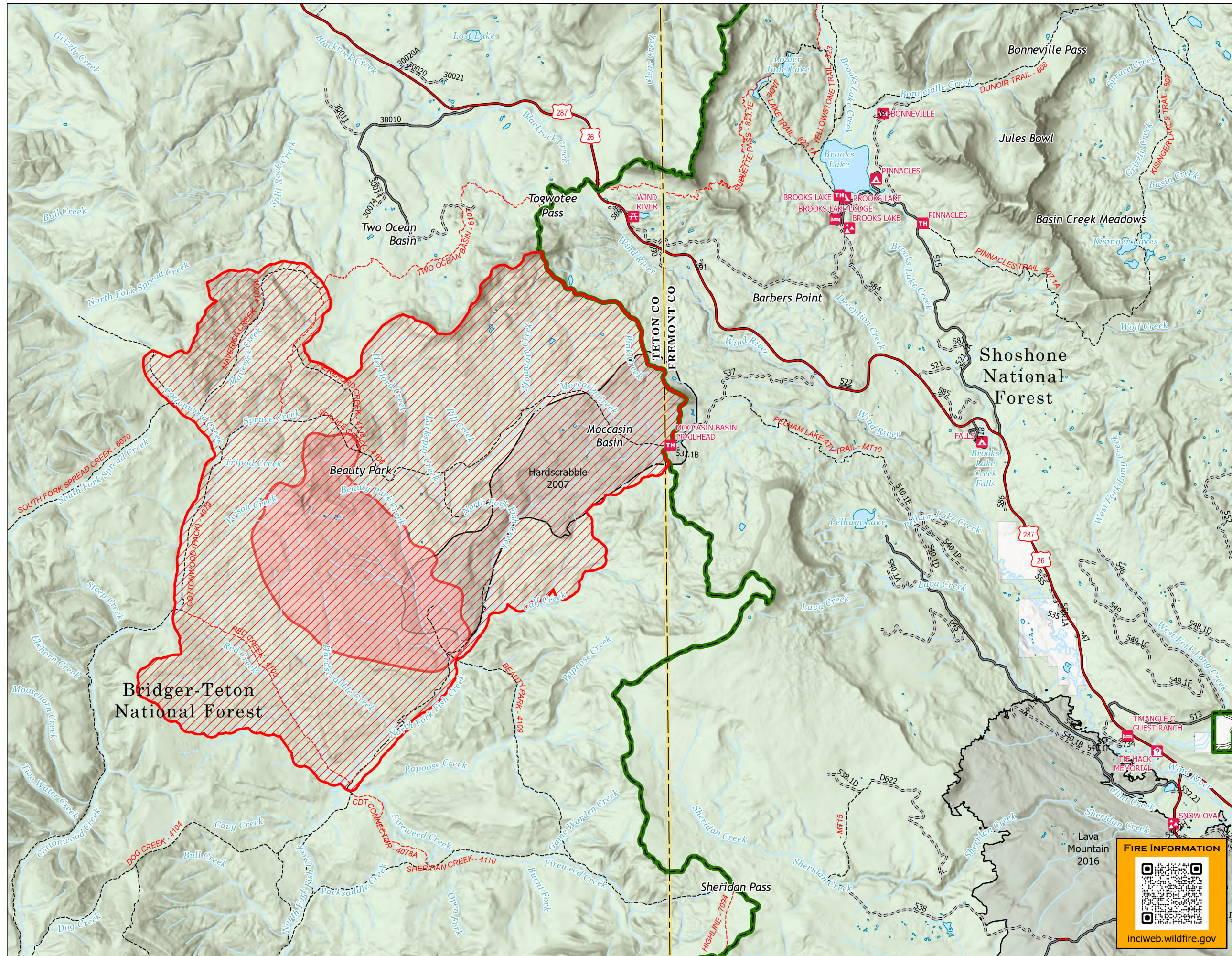
3,207 ACRES



- Wildfire Daily Fire Perimeter
- Fire Closure
- Fire History
- Campground
- Camping Area
- Hotel, Lodge, Resort
- Interpretive Visitor Center
- PICNIC SITE
- Trailhead
- Primary Highway
- Road, Unspecified
- USFS - High Clearance
- USFS - Passenger Cars
- Trail
- Continental Divide Trail
- Forest Boundary
- County Boundary
- US Forest Service (USFS)
- Private



1:75,000 | Teton Interagency Fire | 8/20/2024 2150
GPS Flight
North American 1983 Datum. Lat/Long Grid



FIRE INFORMATION

inciweb.wildfire.gov