



Smoke Outlook

SIERRA NEVADA MTNS Coffee Pot Fire

8/23 - 8/24

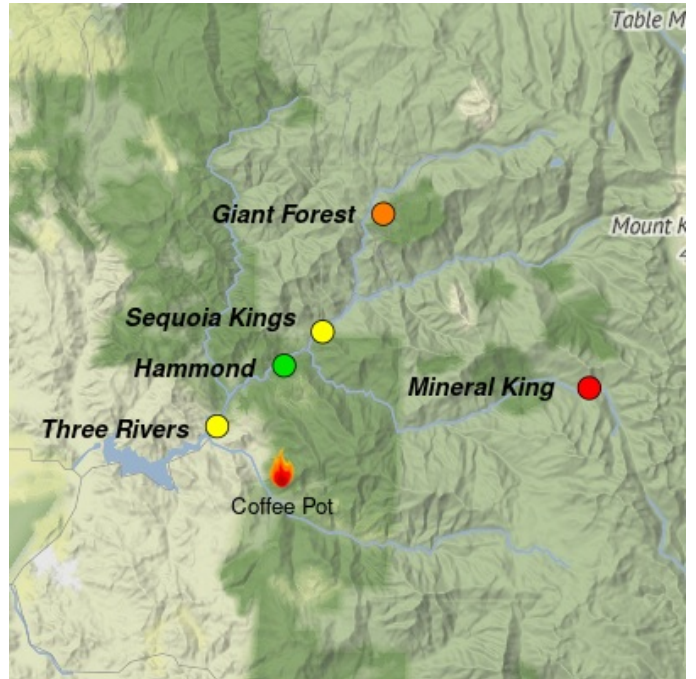
Issued by [Wildland Fire Air Quality Response Program](#) on August 23, 2024 at 08:10 AM PDT

Fire

Fire activity remains intense along the eastern portions of the perimeter. Expect short duration increases in fire activity as falling debris ignites fuels below and allows for short upslope runs. Additional containment lines are being prepared to take advantage of cooler temps and conditions.

Smoke

Multiple temporary monitors were deployed yesterday to reflect the range in smoke impacts along the General HWY and conditions at Mineral King Ranger Station. Visitors can expect hazy conditions to hang above the surface most of the day, with periods of increased surface impacts in the Giant Forest Village and Mineral King Ranger Stations. The cooler air mas that moved into the area will limit the smoke produced today causing a high probability of increased surface impacts as that layer settles this evening.



Daily AQI Forecast* for Friday

Station	Yesterday hourly			Thu 8/22	Comment for Today -- Fri, Aug 23	Forecast*	
	6a	noon	6p			Fri 8/23	Sat 8/24
Sequoia Kings					Limited lift of hazy smoke blanket above with pooling of smoke tonight		
Giant Forest					Overnight smoke will linger most of the day with increasing smoke tonight.		
Three Rivers					Smoky skies above with short periods of surface impacts this evening		
Hammond					Hazy skies above with limited periods of surface impacts		
Mineral King Ranger Station					Brief period of relief this AM followed by increasing surface impacts all day		

Issued Aug 23, 2024 by Jen Croft- Air Resource Advisor 202-794-0207 jennifer.croft@usda.gov

Air Quality Index (AQI)	Actions to Protect Yourself
Good	None
Moderate	Unusually sensitive individuals should consider limiting prolonged or heavy exertion.
USG	People within Sensitive Groups* should reduce prolonged or heavy outdoor exertion.
Unhealthy	People within Sensitive Groups* should avoid all physical outdoor activity.
Very Unhealthy	Everyone should avoid prolonged or heavy exertion.
Hazardous	Everyone should avoid any outdoor activity.

***Disclaimer:** This forecast is based on fine particulates only; ozone is not included. Forecasts may be wrong; use at own risk. Use caution as conditions can change quickly. See your health professional as needed. Smoke sensitive groups should take appropriate precautions.

Additional Links

[Giant Forest Village WebCam](#) -- <https://www.nps.gov/seki/planyourvisit/webcam.htm>



Issued by Interagency Wildland Fire Air Quality Response Program -- www.wildlandfiresmoke.net
 SIERRA NEVADA MTNS Updates -- <https://outlooks.wildlandfiresmoke.net/outlook/675f8176>
 *Smoke and Health Info -- www.airnow.gov/air-quality-and-health