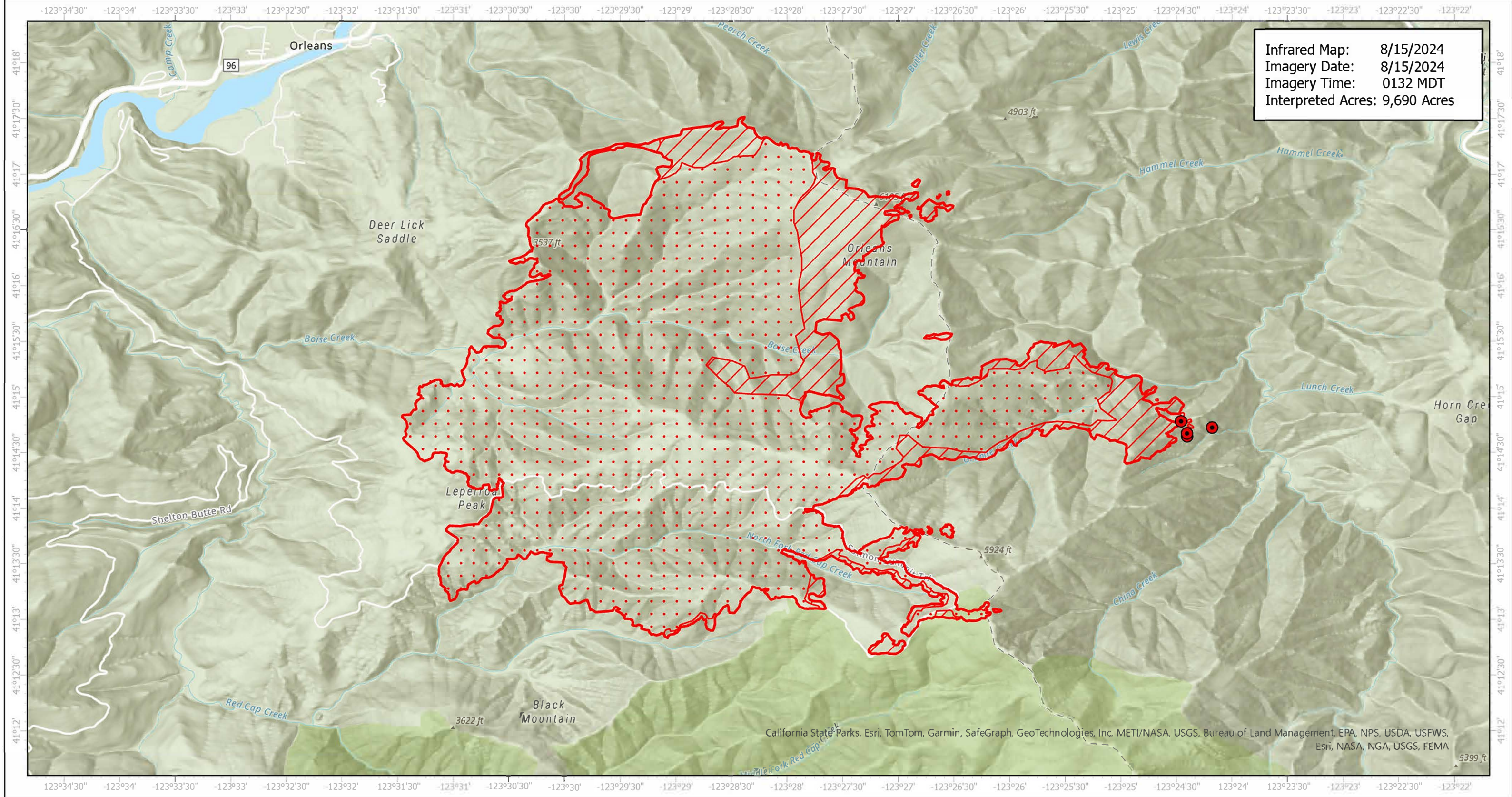
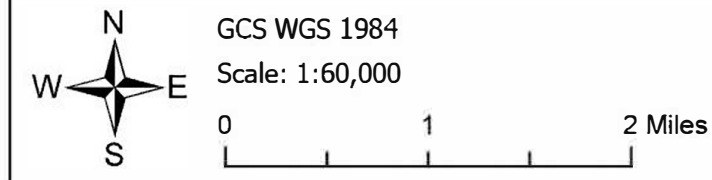


Boise Infrared Map

Incident # (CA-SRF-000729)



Infrared Map: 8/15/2024
Imagery Date: 8/15/2024
Imagery Time: 0132 MDT
Interpreted Acres: 9,690 Acres



- IR Isolated Heat Source
- ▨ IR Intense Heat
- ▭ IR Heat Perimeter
- ◻ IR Scattered Heat

Infrared Interpreter: Brice Culbertson
email: bculbertson@blm.gov