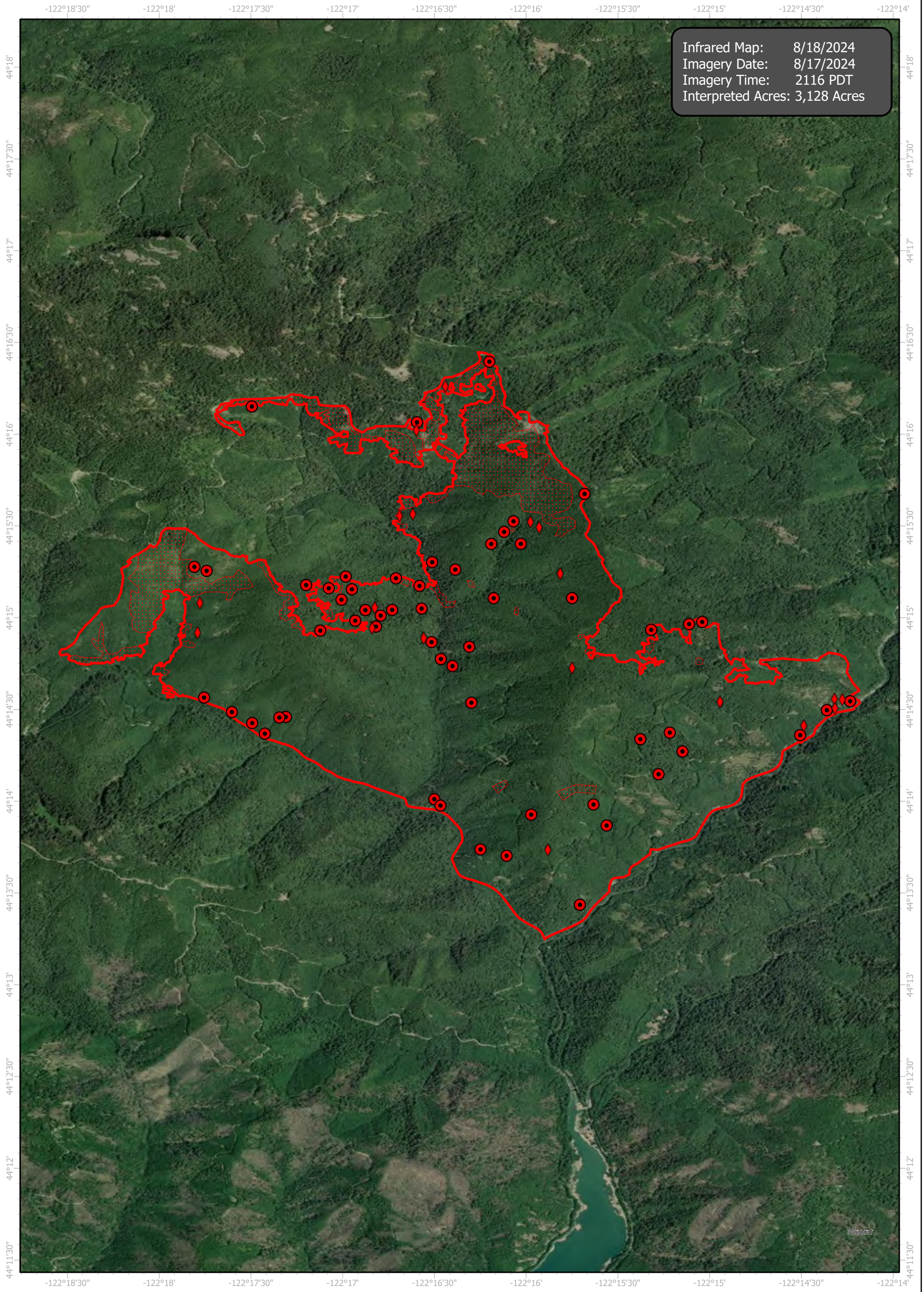


# Ore Infrared Map

Incident # (OR-WIF-240195)



Infrared Map: 8/18/2024  
Imagery Date: 8/17/2024  
Imagery Time: 2116 PDT  
Interpreted Acres: 3,128 Acres



GCS WGS 1984

Scale: 1:35,000

0 0.5 1 Miles

- IR Isolated Heat Source
- Possible IR Heat Source
- IR Intense Heat
- IR Scattered Heat
- IR Heat Perimeter

Infrared Interpreter: Daniel LeVrier  
email: [daniel.levrier@usda.gov](mailto:daniel.levrier@usda.gov)