



**U.S. Department of Agriculture, U.S. Forest Service
Ashley National Forest
Flaming Gorge National Recreation Area and Vernal Ranger
District**

Speirs Fire Road and Trail Closure

PROHIBITIONS

Pursuant to 16 U.S.C. § 551 and 36 C.F.R. § 261.50 (b) the following are prohibited on the National Forest system (NFS) roads and trails on the Flaming Gorge National Recreation Area and Vernal Ranger District, Ashley National Forest, described below and shown on the attached map incorporated into this Order as Exhibit A ("Described Roads and Trails"):

1. Being on the Described Roads. 36 C.F.R. § 261.54(e)
2. Being on the Described Trails. 36 C.F.R. § 261.55(a)

EXEMPTIONS

Pursuant to 36 C.F.R. § 261.53(e), the following persons are exempt from this Order:

1. Persons with Forest Service Permit No. FS-7700-48 (Permit for Use of Roads, Trails, or Areas Restricted by Regulation or Order), specifically exempting them from this Order or a written determination by a Forest Service authorized officer that a permit is not required under 36 C.F.R. § 251.50(e)(1) or (2).
2. Federal or state administrative personnel in performance of an official duty.
3. Any Federal, State, or Local Officer, or member of an organized rescue or firefighting force in the performance of an official duty

DESCRIBED ROADS AND TRAILS

The Described Roads are the following NFS roads in their entirety: NFS Roads 610 and 049 (Greens Draw Road).

The Described Trails are the following segments of NFS trails: the NFS Trail Lowline #

Order Number: # 24-0401-006

103, beginning at its junction with the Pipe Creek Trail, NFS Trail 003, and continuing to the trailhead at Hwy 191; NFS Trail # 003, beginning at its junction with NFS Trail # 103 and continuing to its junction with NFS Trail # 004; and NFS Trail # 004, beginning at the junction with NFS Trail # 003 and continuing its intersection with Greens Draw Road 049.


PURPOSE

The purpose of this Order is to protect public safety during the Speirs fire.

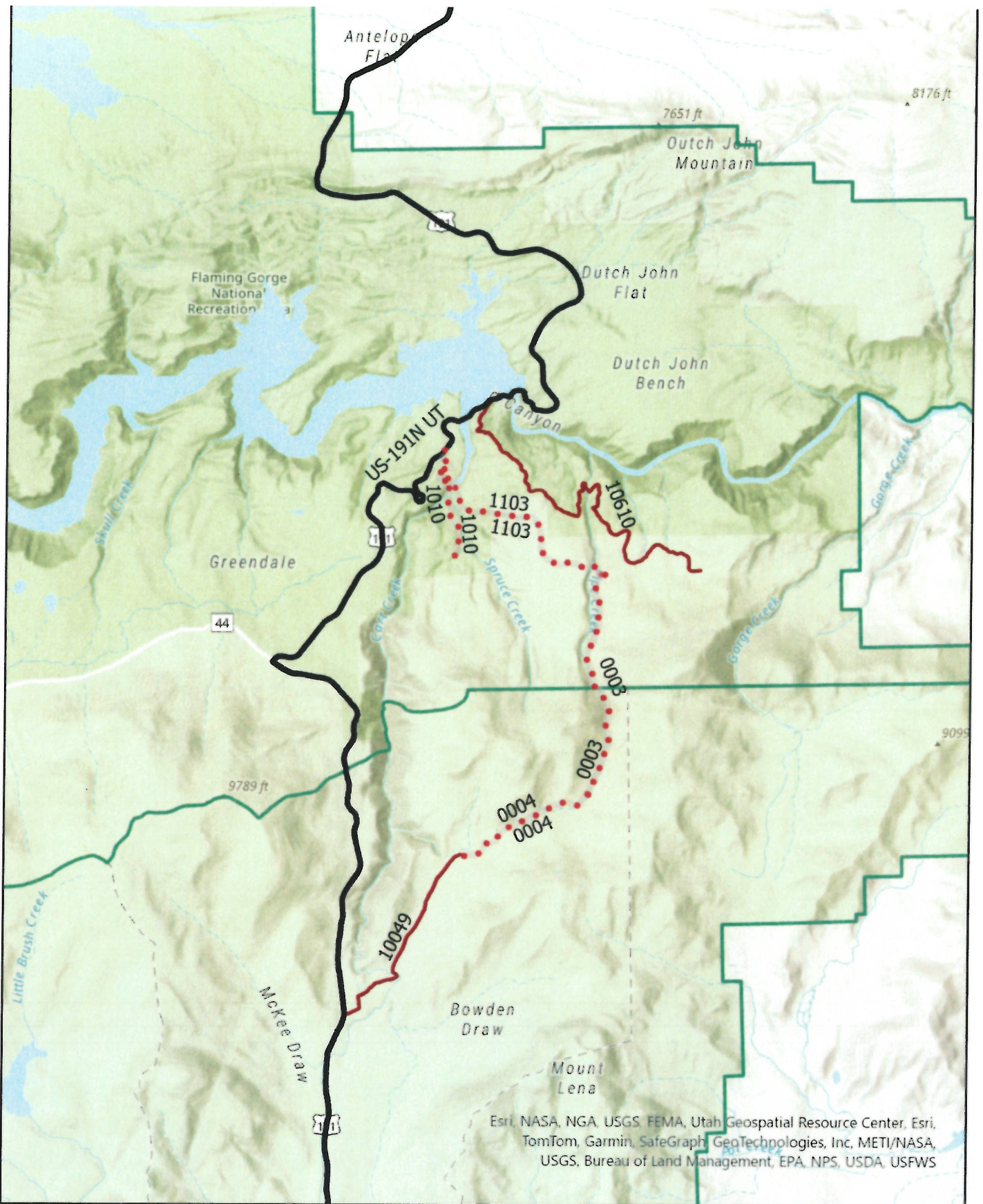
IMPLEMENTATION

1. This Order shall be in effect from 8/6/2024 at 12:00PM through 8/31/2024 at 12:01 AM, unless rescinded.
2. A map identifying the Described Roads and Trails is attached and made part of this Order as Exhibit A. For a digital version of this Order and Exhibit A, go to <https://www.fs.usda.gov/alerts/ashley/alerts-notice>.
3. Unless otherwise expressly defined in this Order, the terms used in this Order are defined by the regulations of the Secretary of Agriculture, 36 C.F.R. Chapter II, Parts 200-299. If there are terms in this Order that are not expressly defined in the Order or 36 C.F.R. Chapter II, Parts 200-299, their meaning shall be determined by their plain language definitions.
4. A violation of the above prohibitions is punishable as a Class B misdemeanor by a fine of not more than \$5,000 for individuals and \$10,000 for organizations, or by imprisonment for not more than six months, or both. 16 U.S.C. § 551; 18 U.S.C. §§ 3559, 3571, and 3581.
5. Contact the Flaming Gorge National Recreation Area in Manila, UT at 435-784-3445, the Vernal Ranger District or the Ashley National Forest Supervisor's Office in Vernal, Ut at 435-789-1181 for more information about this Order.
6. This Order supersedes Order # 24-401-003 prohibiting the same or similar acts on the same Described Roads and Trails.

Signed and issued on August 6, 2024.



Forest Supervisor
Ashley National Forest



Esri, NASA, NGA, USGS, FEMA, Utah Geospatial Resource Center, Esri, TomTom, Garmin, SafeGraph, GeoTechnologies, Inc, METI/NASA, USGS, Bureau of Land Management, EPA, NPS, USDA, USFWS

Legend

- Closed Trails
- Roads**
- RTE_NO
Closed Roads
- Hwy 191
- <all other values>

**Speirs Fire Road and Trail Closures
Order # 0401-24-006**

2024

Coordinate System WGS 1984 Web Mercator Auxiliary Sphere

