

PIO

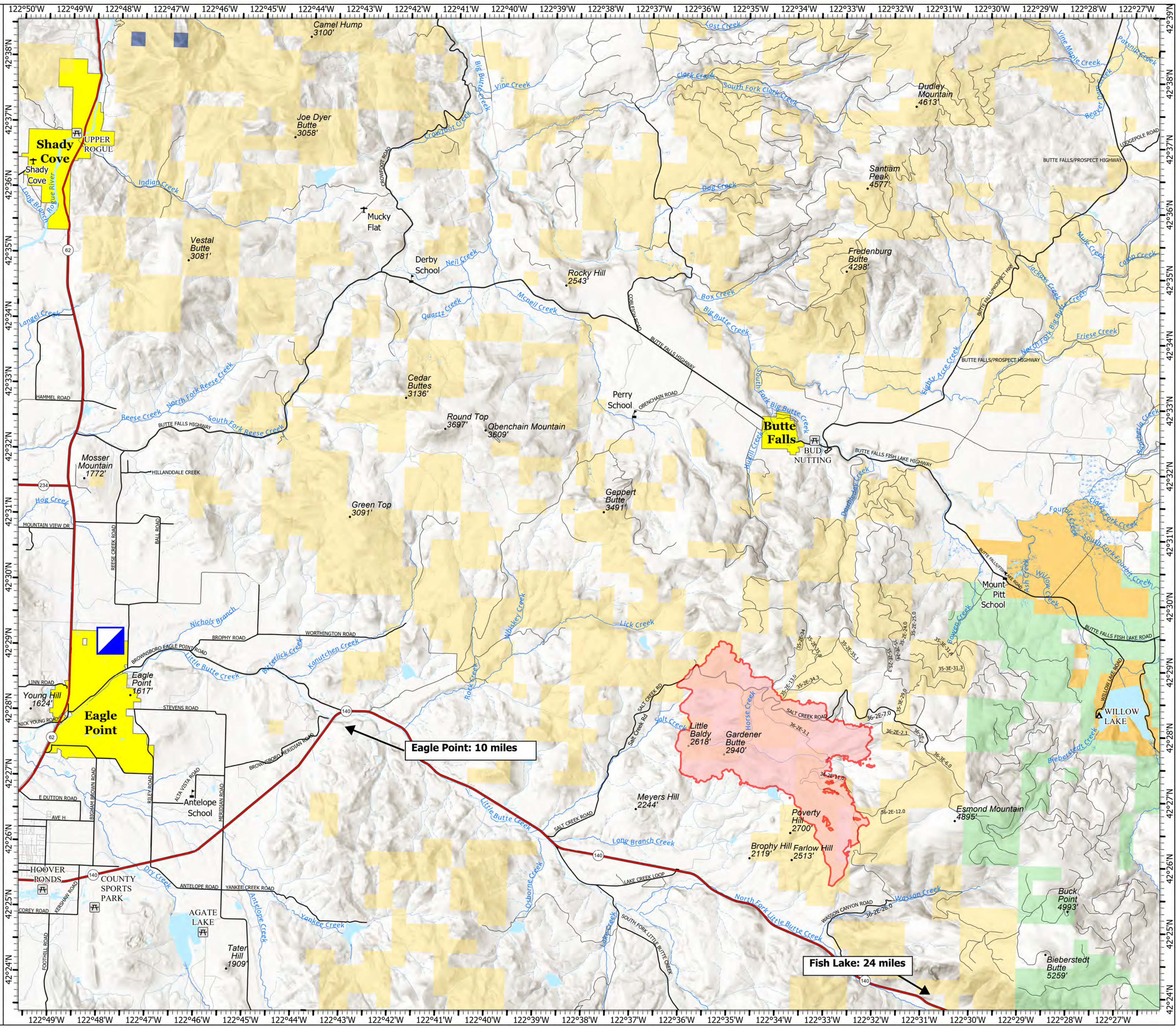
Salt Creek

OR-7113-037-25

07/14/2024 Day

4081 acres at 07/12/2024 at 2200

- Incident Command Post
- Wildfire Daily Fire Perimeter
- Summits
- ✈ Airport
- ▲ Campgrounds
- Ⓜ Day Use Area
- 🎓 School
- Federal and State
- Highway exit; Paved
- Paved - Secondary Display
- All weather
- Waterways
- Waterbodies
- Wetlands, Marsh
- Oregon Land Board Lands Managed by ODF
- United States Bureau of Land Management
- United States Forest Service
- Local Government
- City Limits



Eagle Point: 10 miles

Fish Lake: 24 miles

