

117°1'W 117°W 116°59'W 116°58'W 116°57'W 116°56'W 116°55'W 116°54'W 116°53'W 116°52'W 116°51'W 116°50'W 116°49'W 116°48'W 116°47'W 116°46'W 116°45'W 116°44'W 116°43'W 116°42'W 116°41'W 116°40'W 116°39'W 116°38'W 116°37'W 116°36'W 116°35'W 116°34'W 116°33'W 116°32'W 116°31'W

PIO

Limepoint ID-PAF-005464

7/30 Day

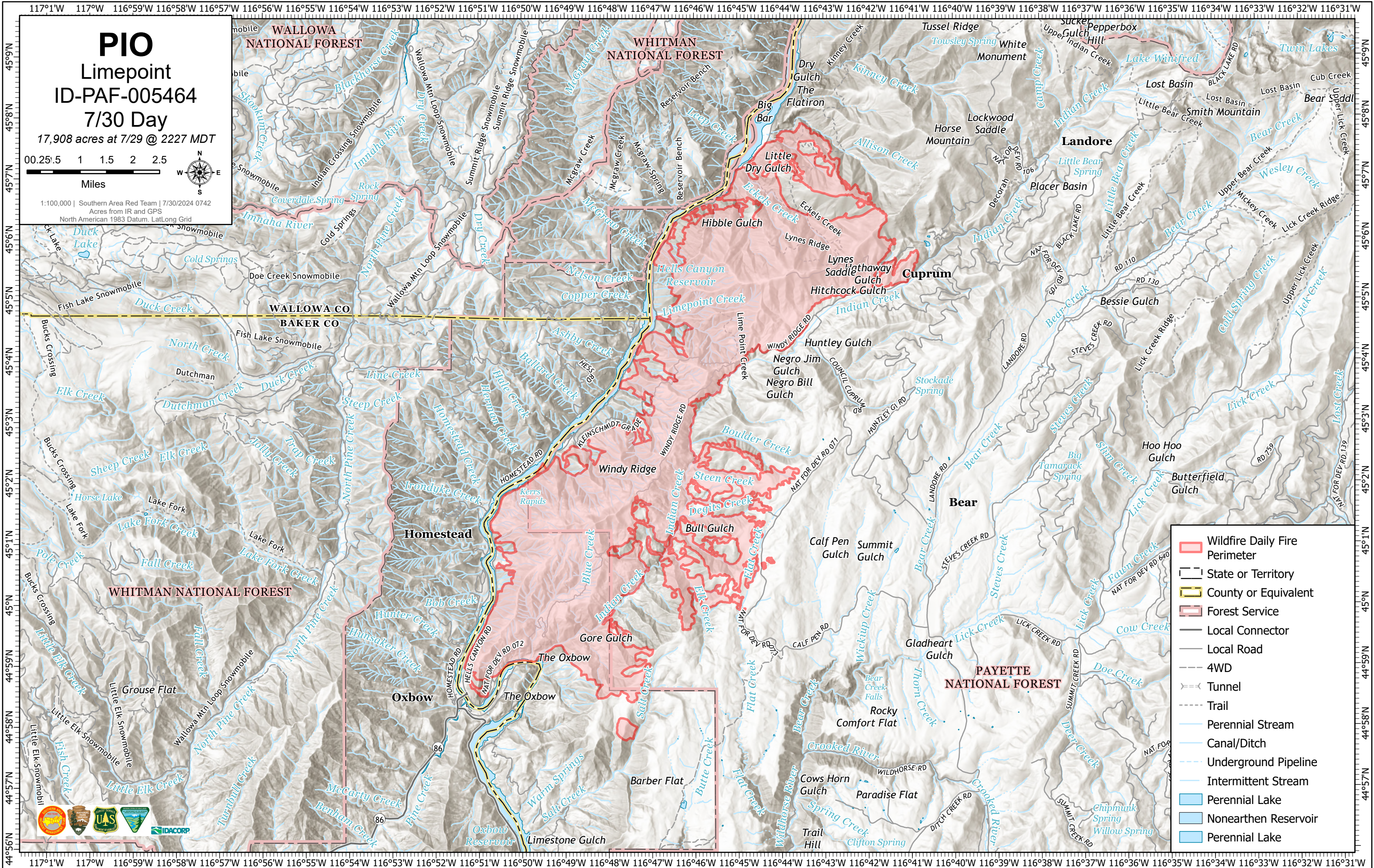
17,908 acres at 7/29 @ 2227 MDT

00.25 0.5 1 1.5 2 2.5

Miles



1:100,000 | Southern Area Red Team | 7/30/2024 0742
Acres from IR and GPS
North American 1983 Datum, LatLong Grid



- Wildfire Daily Fire Perimeter
- State or Territory
- County or Equivalent
- Forest Service
- Local Connector
- Local Road
- 4WD
- Tunnel
- Trail
- Perennial Stream
- Canal/Ditch
- Underground Pipeline
- Intermittent Stream
- Perennial Lake
- Nonearthen Reservoir
- Perennial Lake

117°1'W 117°W 116°59'W 116°58'W 116°57'W 116°56'W 116°55'W 116°54'W 116°53'W 116°52'W 116°51'W 116°50'W 116°49'W 116°48'W 116°47'W 116°46'W 116°45'W 116°44'W 116°43'W 116°42'W 116°41'W 116°40'W 116°39'W 116°38'W 116°37'W 116°36'W 116°35'W 116°34'W 116°33'W 116°32'W 116°31'W

