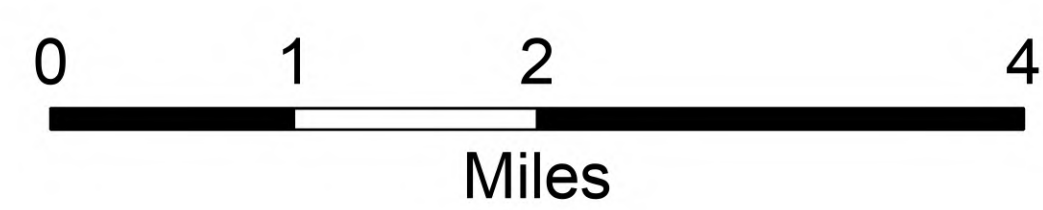
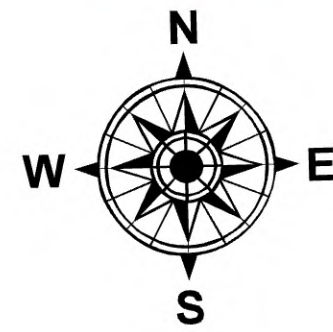


# Briefing

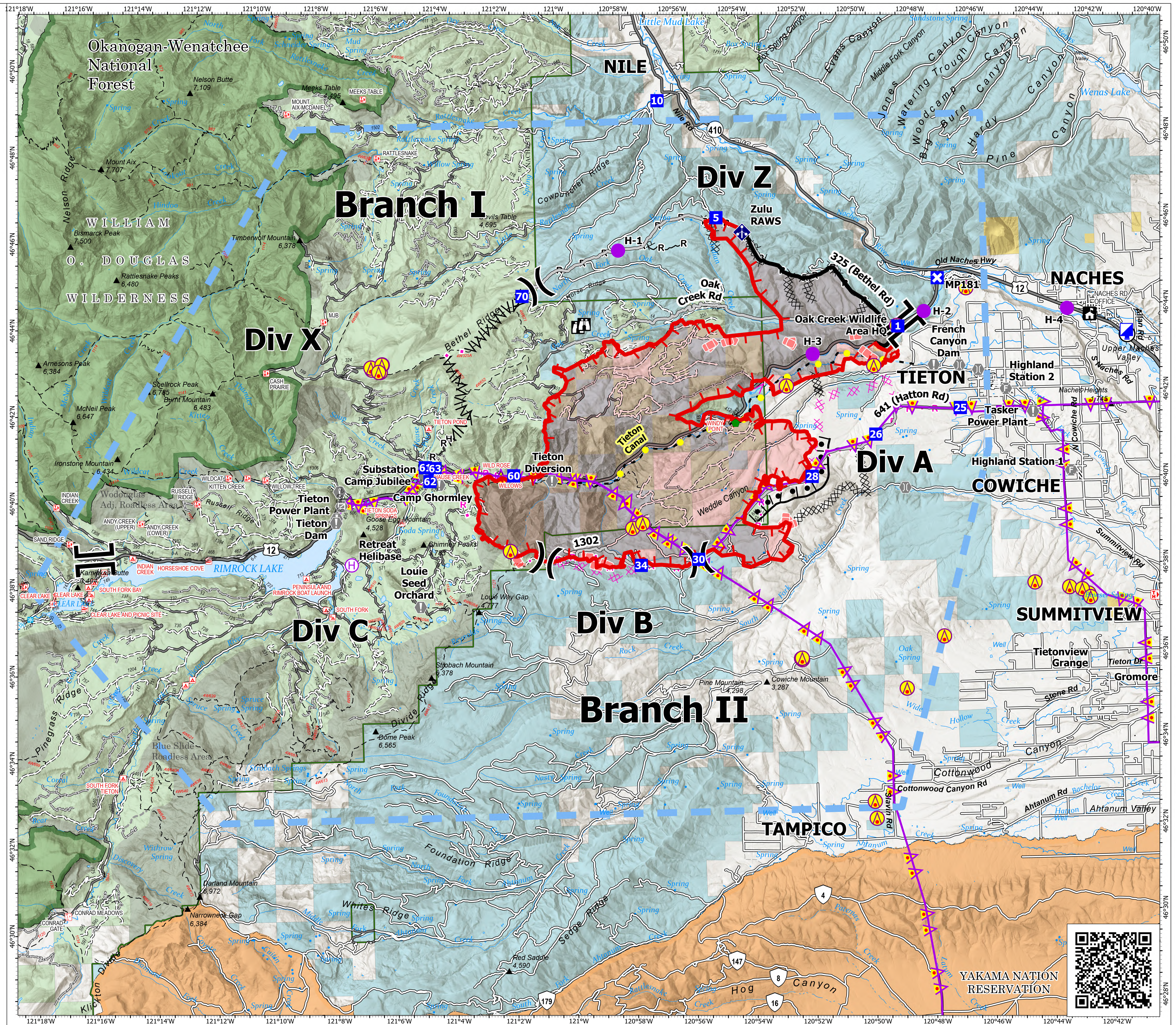
Retreat  
WA-SES-000477  
July 29, 2024 Day

29,499 acres at 7/29/2024 1045hr

- Aerial Hazard
- Helispot
- Helibase
- Division Break
- Branch Break
- Incident Command Post
- Drop Point
- Closure
- Lookout
- Value at Risk
- Gate
- Fire Station
- Bridge
- Repair Point
- Mobile Weather Unit
- Hydrant
- Completed Burnout
- Completed Dozer Line
- Completed Fuel Break
- Completed Hand Line
- Planned Dozer Line
- Planned Fuel Break
- Planned Mixed Construction Line
- Planned Plow Line
- Planned Road as Line
- Proposed Line
- Access Route
- Highlighted Feature
- Aerial Hazard
- Retardant Drop
- Temporary Flight Restriction
- Contained
- Uncontained
- Wildfire Daily Fire Perimeter
- Primary Highway
- Secondary Highway
- Road
- Road, Paved
- Road, Dirt/Gravel
- Road, high clearance
- Trail
- Railroad
- Administrative FS Boundary
- Ranger District Boundary
- FS Wilderness Boundary
- USFS Roadless Areas
- USFS Wilderness
- Bureau of Indian Affairs (BIA)
- Bureau of Land Management (BLM)
- Bureau of Reclamation (BOR)
- State
- US Forest Service (USFS)
- Private



1:50,000 | NR1 GIS | 7/29/2024 1525  
Acres from IR  
North American 1983 Datum, Lat/Long Grid



YAKAMA NATION  
RESERVATION