

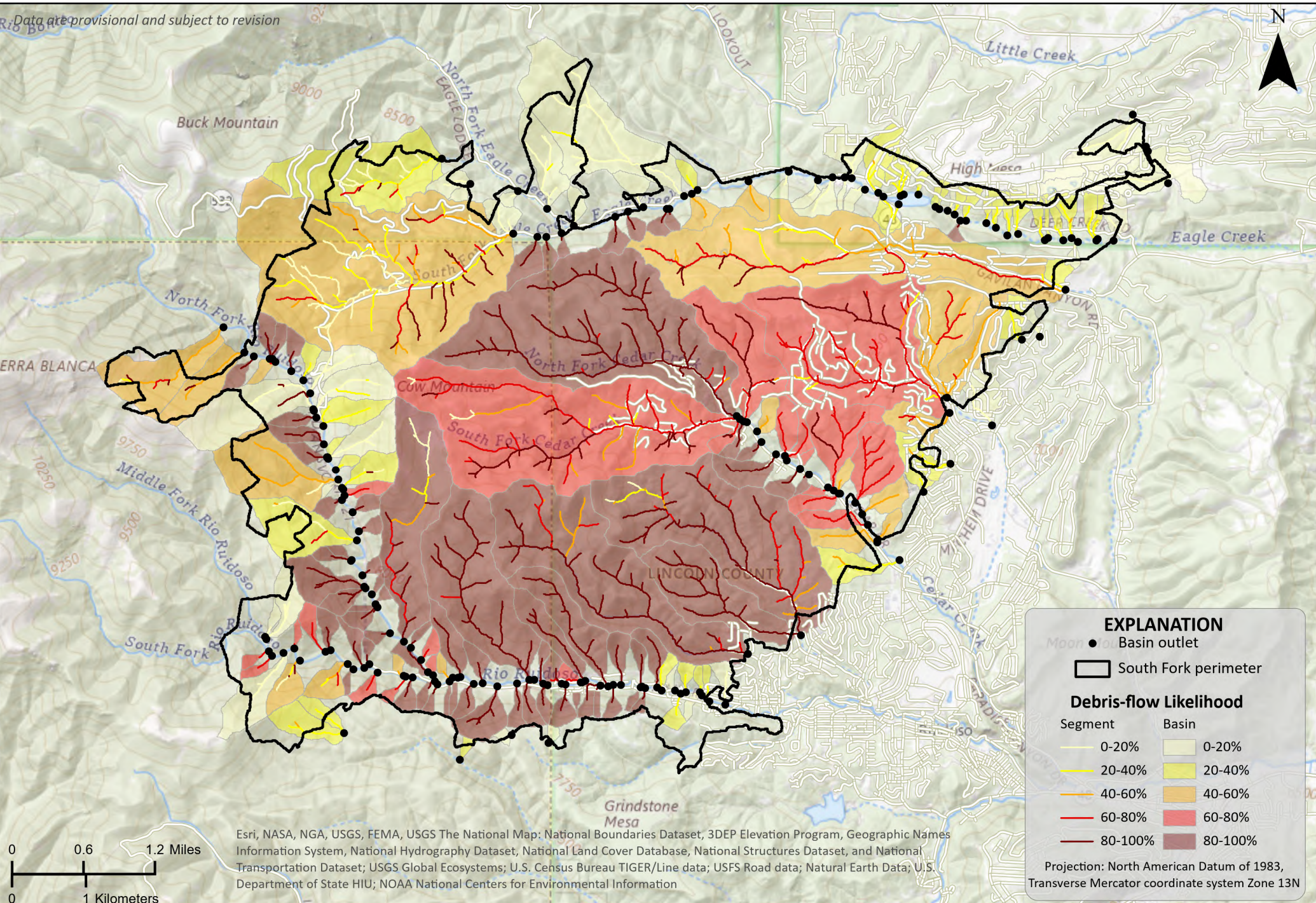
South Fork Fire, Lincoln County, New Mexico

Debris-flow Likelihood

Design storm: Peak 15-minute rainfall intensity 40 mm/h



Data are provisional and subject to revision



Esri, NASA, NGA, USGS, FEMA, USGS The National Map; National Boundaries Dataset, 3DEP Elevation Program, Geographic Names Information System, National Hydrography Dataset, National Land Cover Database, National Structures Dataset, and National Transportation Dataset; USGS Global Ecosystems; U.S. Census Bureau TIGER/Line data; USFS Road data; Natural Earth Data; U.S. Department of State HIU; NOAA National Centers for Environmental Information

EXPLANATION

- Basin outlet
- South Fork perimeter

Debris-flow Likelihood

Segment	Basin
0-20%	0-20%
20-40%	20-40%
40-60%	40-60%
60-80%	60-80%
80-100%	80-100%

Projection: North American Datum of 1983, Transverse Mercator coordinate system Zone 13N