



Smoke Outlook

Southern Sequoia Lightning Fires

7/22 - 7/23

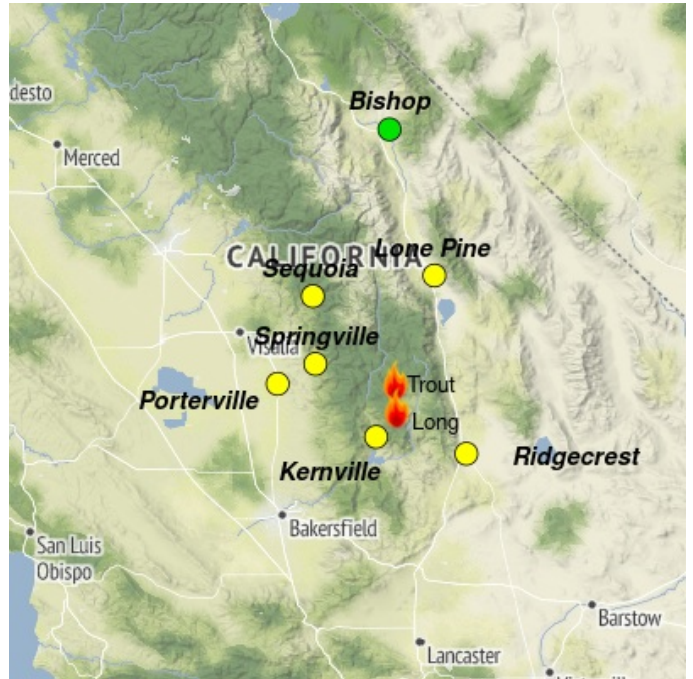
Issued by Wildland Fire Air Quality Response Program on July 22, 2024 at 07:34 AM PDT

Fire

The Acorn and Packsaddle fires saw minimal growth yesterday, while the Long and Trout remain the most active of the SQF Lightning Fires. Expected fire behavior includes group torching, spotting, and uphill runs. Tactical firing operations are planned on the Trout fire today to secure holding lines. Additional information can be found here [SQF Lightning Fires Inciweb](#)

Smoke

Yesterday, smoke generally tracked to the NW and impacted foothill communities causing MODERATE conditions on the westside. Today, tactical firing operations are planned on the NW side of the Trout fire to secure holding lines and reduce rate of fire spread. Expect similar smoke transport with westside communities seeing MODERATE to USG conditions. The Owens Valley should see generally GOOD to MODERATE conditions by early afternoon, with conditions improving the farther north you go. Smoke will again pool overnight and should begin to lift by early afternoon.



Daily AQI Forecast* for Monday

| Station | Yesterday hourly | | | Sun 7/21 | Comment for Today -- Mon, Jul 22 | Forecast* | |
|-------------|------------------|------|----|----------|--|-----------|----------|
| | 6a | noon | 6p | | | Mon 7/22 | Tue 7/23 |
| Bishop | | | | | Generally GOOD air quality with potential periods of MODERATE in the afternoon | | |
| Lone Pine | No hourly data | | | | MODERATE in the AM, improving in the afternoon, light smoke pooling overnight | | |
| Ridgecrest | No hourly data | | | | MODERATE in the AM, improving by midday, smoke returning overnight | | |
| Kernville | No hourly data | | | | MODERATE to USG in the AM as smoke mixes down, improving in the afternoon | | |
| Porterville | | | | | Generally MODERATE to USG conditions throughout the day | | |
| Sequoia | | | | | MODERATE to USG in the AM, Generally MODERATE conditions as smoke tracks NW | | |
| Springville | | | | | MODERATE to USG in the AM, improving throughout the day, settling overnight | | |

Issued Jul 22, 2024 by Andrea Nick andrea.nick@usda.gov

| Air Quality Index (AQI) | Actions to Protect Yourself |
|-------------------------|---|
| Good | None |
| Moderate | Unusually sensitive individuals should consider limiting prolonged or heavy exertion. |
| USG | People within Sensitive Groups* should reduce prolonged or heavy outdoor exertion. |
| Unhealthy | People within Sensitive Groups* should avoid all physical outdoor activity. |
| Very Unhealthy | Everyone should avoid prolonged or heavy exertion. |
| Hazardous | Everyone should avoid any outdoor activity. |

***Disclaimer:** This forecast is based on fine particulates only; ozone is not included. Forecasts may be wrong; use at own risk. Use caution as conditions can change quickly. See your health professional as needed. Smoke sensitive groups should take appropriate precautions.

Additional Links

[Lightning Fire Inciweb](https://inciweb.wildfire.gov/incident-information/casqf-2024-sqf-lightning) -- <https://inciweb.wildfire.gov/incident-information/casqf-2024-sqf-lightning>

[Fire and Smoke Map](https://fire.airnow.gov/) -- <https://fire.airnow.gov/>

[Be Smoke Ready!](https://www.wildlandfiresmoke.net/smoke-ready) -- <https://www.wildlandfiresmoke.net/smoke-ready>

--



Issued by Interagency Wildland Fire Air Quality Response Program -- www.wildlandfiresmoke.net
Southern Sequoia Updates -- <https://outlooks.wildlandfiresmoke.net/outlook/1de35118>

*Smoke and Health Info -- www.airnow.gov/air-quality-and-health