

Pioneer WA-SES-000173 Public Information Map

13492 acres at 7/11/2024 @ 0045



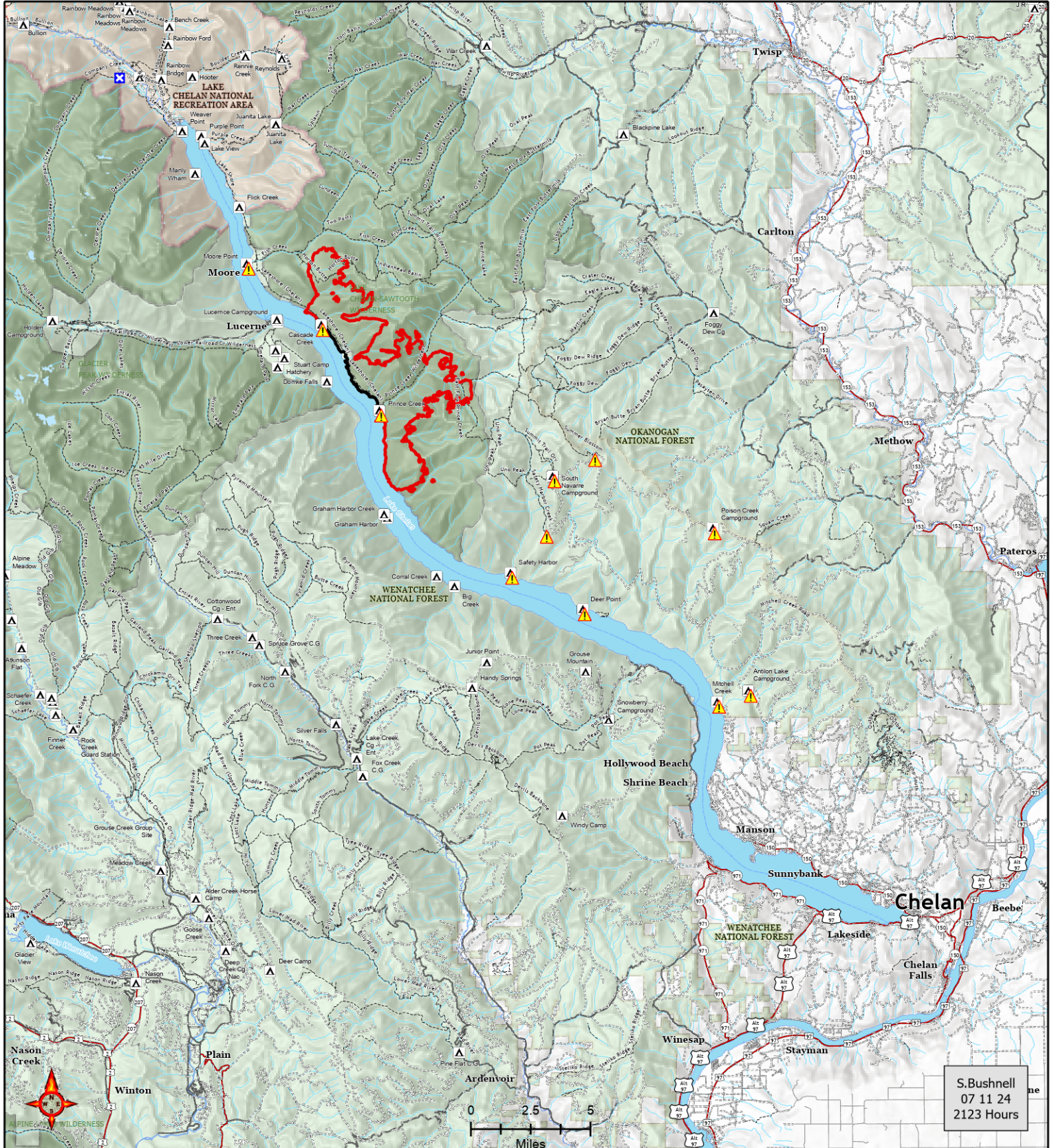
- Forest Closure Point
- Closure
- Contained
- Uncontained Fire Edge
- Fire Area

Disclaimer:

While NW IMT12 makes every effort to represent the data shown on these maps as completely and accurately as possible, no warranty is given, expressed or implied, as to the accuracy, reliability, or completeness of these data. In addition, NW IMT12 and/or other participating agencies shall not be held liable for improper or incorrect use of the data described and/or contained herein. Graphical representations provided by the use of this data does not represent any legal description of the data herein and are provided only as a general representation of the data. No indication/statement of fire containment is given, expressed or implied by this product.

More Information:

<http://inciweb.nwcg.gov>



S. Bushnell
07 11 24
2123 Hours