

117°39.5'W 117°38.5'W 117°37.5'W 117°36.5'W 117°35.5'W 117°34.5'W 117°33.5'W 117°32.5'W 117°31.5'W 117°30.5'W 117°29.5'W 117°28.5'W 117°27.5'W 117°26.5'W

44°37.5'N 44°37'N 44°36.5'N 44°36'N 44°35.5'N 44°35'N 44°34.5'N 44°34'N 44°33.5'N 44°33'N 44°32.5'N 44°32'N 44°31.5'N 44°31'N 44°30.5'N 44°30'N 44°29.5'N 44°29'N 44°28.5'N 44°28'N 44°27.5'N 44°27'N 44°26.5'N 44°26'N 44°25.5'N 44°25'N 44°24.5'N 44°24'N 44°23.5'N

44°38'N 44°37.5'N 44°37'N 44°36.5'N 44°36'N 44°35.5'N 44°35'N 44°34.5'N 44°34'N 44°33.5'N 44°33'N 44°32.5'N 44°32'N 44°31.5'N 44°31'N 44°30.5'N 44°30'N 44°29.5'N 44°29'N 44°28.5'N 44°28'N 44°27.5'N 44°27'N 44°26.5'N 44°26'N 44°25.5'N 44°25'N 44°24.5'N 44°24'N 44°23.5'N

Public Information


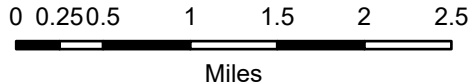
Durkee

OR-VAD-240141


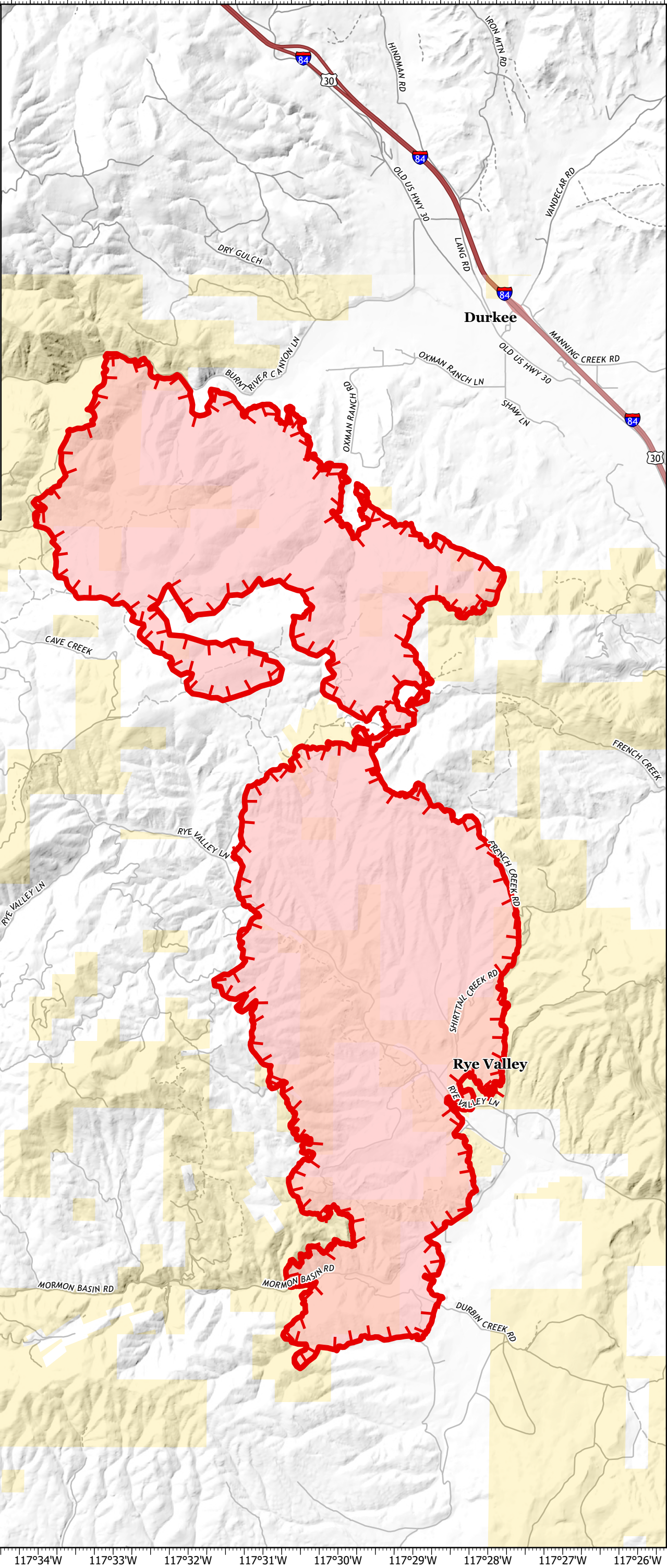
07/19/2024

15,631 acres at 07/19/2024 1040 MT

- Uncontained
- Wildfire Daily Fire Perimeter
- Bureau of Land Management (BLM)
- Private

1:69,840 | NW6 | 7/19/2024 1901
Acres from IR and GPS
North American 1983 Datum, LatLong Grid

117°39'W 117°38'W 117°37'W 117°36'W 117°35'W 117°34'W 117°33'W 117°32'W 117°31'W 117°30'W 117°29'W 117°28'W 117°27'W 117°26'W