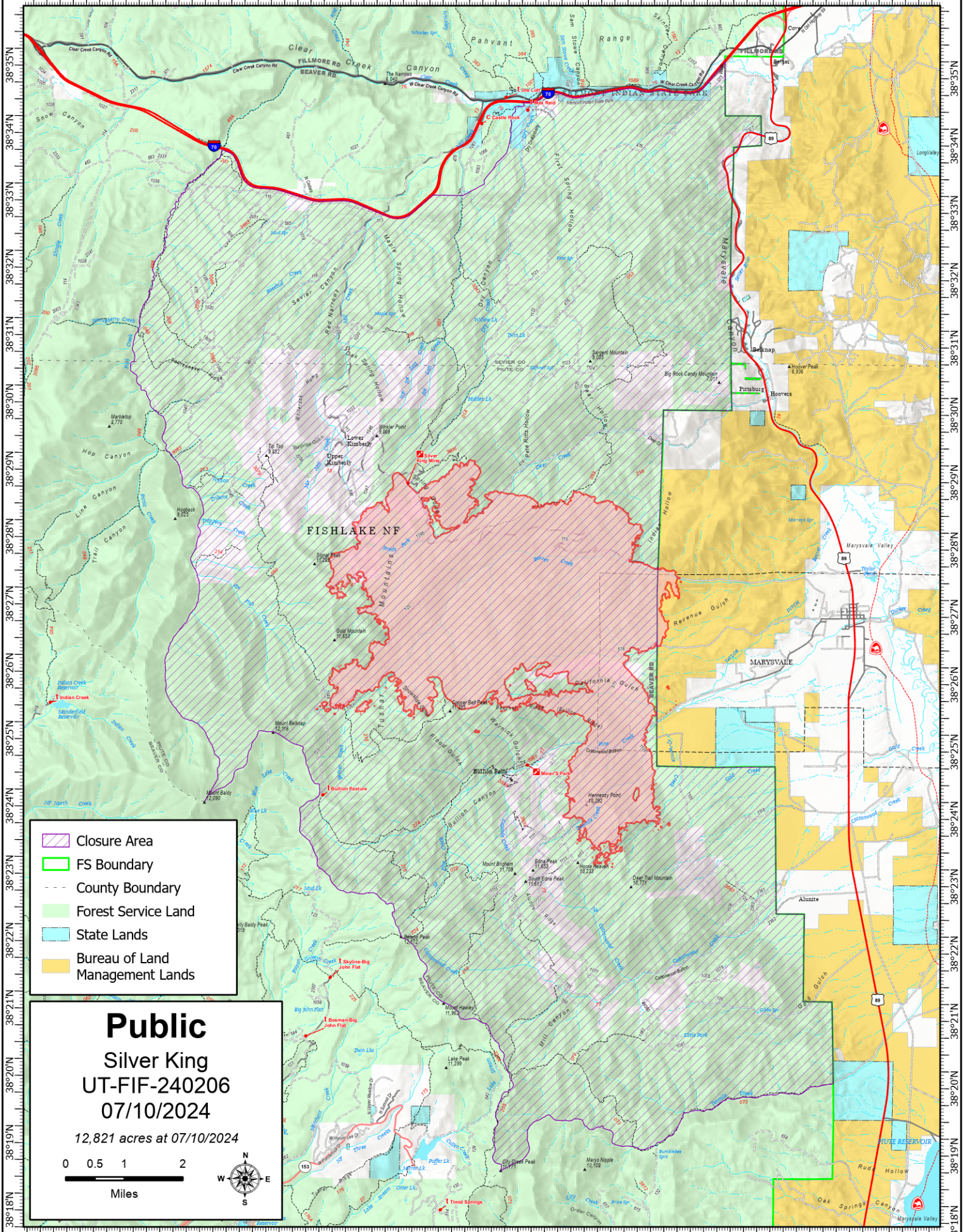

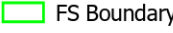
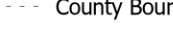
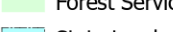
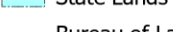



112°29.5'W 112°28.5'W 112°27.5'W 112°26.5'W 112°25.5'W 112°24.5'W 112°23.5'W 112°22.5'W 112°21.5'W 112°20.5'W 112°19.5'W 112°18.5'W 112°17.5'W 112°16.5'W 112°15.5'W 112°14.5'W 112°13.5'W 112°12.5'W



112°29'W 112°28'W 112°27'W 112°26'W 112°25'W 112°24'W 112°23'W 112°22'W 112°21'W 112°20'W 112°19'W 112°18'W 112°17'W 112°16'W 112°15'W 112°14'W 112°13'W

-  Closure Area
-  FS Boundary
-  County Boundary
-  Forest Service Land
-  State Lands
-  Bureau of Land Management Lands

Public
Silver King
UT-FIF-240206
07/10/2024

12,821 acres at 07/10/2024

0 0.5 1 2
 Miles

