

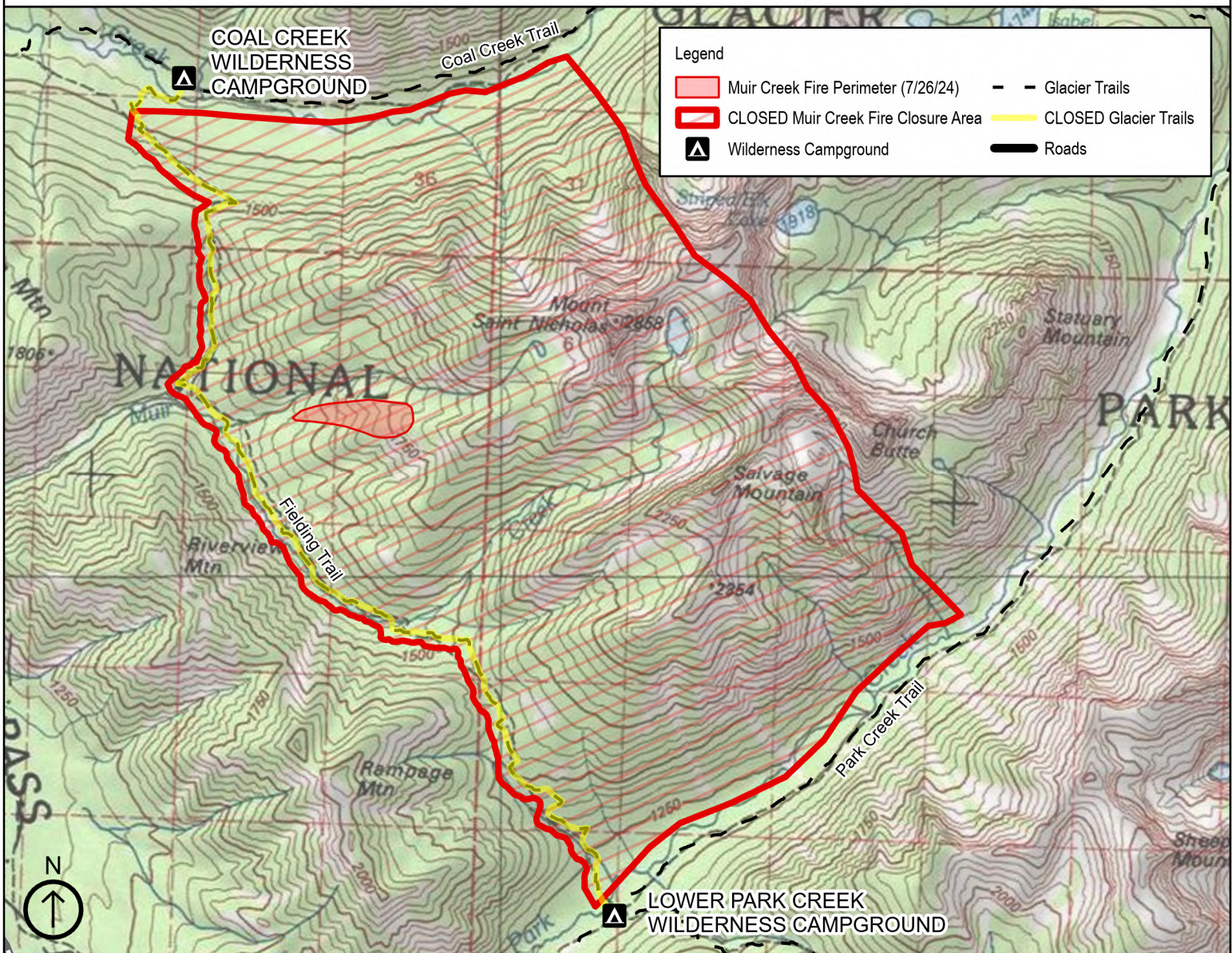


AREA CLOSED

Due to the Muir Creek Fire, all visitor use, administrative use, concession use, commercial use authorizations, use for research, and special use permits are prohibited within the closed area.

This closure is in order to protect the safety of park visitors and for the protection of the park's resources.

Coal Creek Trail, Park Creek Trail, Coal Creek Wilderness Campground, and the Lower Park Creek Wilderness Campground remain open at this time.



Under the authority of Title 36 of the Code of Federal Regulations, section 1.5 (a), violation of these regulations is punishable as a Class B misdemeanor, by a fine of no more than \$5,000 and/or imprisonment for not more than six (6) months.

CLOSURE EFFECTIVE DATE: JULY 26, 2024