



Smoke Outlook

NW Oregon - Willamette NF

7/26 - 7/27

Issued by [Wildland Fire Air Quality Response Program](#) on July 26, 2024 at 08:17 AM PDT

Special Statement

This outlook now includes the Coffeepot Fire due to its recent increase in size and smoke production.

Fire

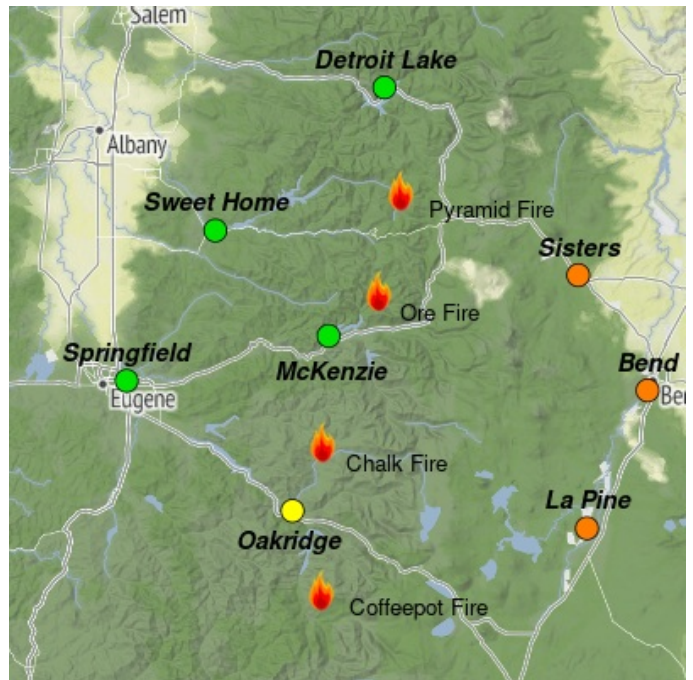
Crews across the Willamette are working to establish control lines and increase containment along the fire perimeters. The Ore Fire increased about 200 acres to 1,223 since yesterday, now with 3% containment. To the south, Chalk is reporting 2,916 acres, an increase of about 200 acres, and the Coffeepot is at 1,687 acres, about 350 acres in growth since yesterday. Those are at 0% containment. The Pyramid Fire is reporting 615 acres and increased to 5% containment. Details on the other neighboring fires in the region are available at inciweb.nwcg.gov.

Smoke

This morning, there is good air quality on the eastern boundary of our monitoring area. Winds scoured out the smoke from low lying communities to the east of the fire. Sisters, Bend and La Pine are likely to see smoke return later today due to their proximity to active fires and prevailing winds. Communities to the north and west will remain clear with the absence of any fires upwind of them. We expect this similar fire activity and smoke behavior through the weekend. Additional smoke outlooks for fires to the south and east are available at outlooks.wildlandfiresmoke.net

Monitor Update

McKenzie smoke monitor reporting an error and was replaced this morning with a new monitor. Please disregard the "unhealthy" conditions yesterday - conditions were "Good" all day.



Daily AQI Forecast* for Friday

Station	Yesterday			Thu 7/25	Comment for Today -- Fri, Jul 26	Forecast*	
	hourly					Fri 7/26	Sat 7/27
Detroit Lake	6a	noon	6p	Green	Clear conditions expected again today and through the weekend.	Green	Green
Sweet Home				Green	Expecting clear conditions today and through the weekend.	Green	Green
Springfield				Green	Clear conditions are expected to continue today and through the weekend.	Green	Green
Oakridge				Green	Clear overnight, Chalk Fire may have smoke settle midday.	Yellow	Yellow
Sisters				Yellow	Fire activity impacting area, winds should improve conditions for the evening.	Orange	Orange
Bend				Yellow	Good clearing of the smoke yesterday, but active fires may return today.	Orange	Orange
La Pine				Orange	Increased fire activity and predominant winds will bring in more smoke.	Orange	Orange
McKenzie				Red	Monitor Replaced. Yesterday saw GOOD air quality, will likely continue today.	Green	Yellow

Issued Jul 26, 2024 by Ali Kamal, Air Resource Advisor (kamal.ali@epa.gov)

Air Quality Index (AQI)	Actions to Protect Yourself
Green Good	None
Yellow Moderate	Unusually sensitive individuals should consider limiting prolonged or heavy exertion.
Orange USG	People within Sensitive Groups* should reduce prolonged or heavy outdoor exertion.
Red Unhealthy	People within Sensitive Groups* should avoid all physical outdoor activity.
Purple Very Unhealthy	Everyone should avoid prolonged or heavy exertion.
Brown Hazardous	Everyone should avoid any outdoor activity.

*Disclaimer: This forecast is based on fine particulates only; ozone is not included. Forecasts may be wrong; use at own risk. Use caution as conditions can change quickly. See your health professional as needed. Smoke sensitive groups should take appropriate precautions.



Issued by Interagency Wildland Fire Air Quality Response Program -- www.wildlandfiresmoke.net
NW Oregon Updates -- <https://outlooks.wildlandfiresmoke.net/outlook/5ae05a65>
*Smoke and Health Info -- www.airnow.gov/air-quality-and-health
