



# Smoke Outlook

## NW Oregon - Willamette NF

7/25 - 7/26

Issued by [Wildland Fire Air Quality Response Program](#) on July 25, 2024 at 09:02 AM PDT

### Special Statement

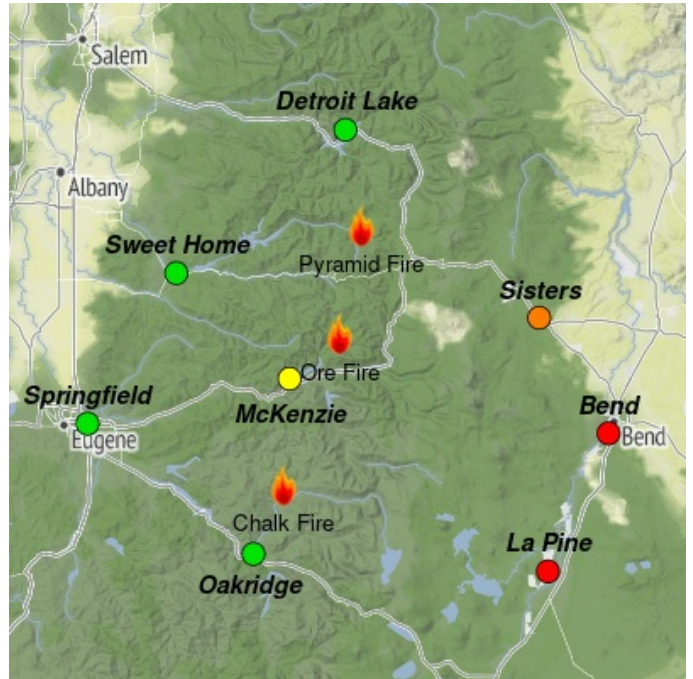
This outlook that focuses on the communities that may be impacted by the fires on the Willamette National Forest.

### Fire

Yesterday saw increased fire activity on the Willamette and crews are continuing their suppression on challenging terrain. The Ore fire is now reporting 1,050 acres with 2% containment. The Pyramid Fire increased to 615 acres while the Chalk Fire is reporting approximately 2,700 acres. As of 0800 this morning, both the Pyramid and the Chalk remain at 0% containment. Details on the other neighboring fires in the region are available at [inciweb.nwcg.gov](http://inciweb.nwcg.gov).

### Smoke

Several fires on the Willamette and neighboring forests are contributing to the smoke in communities to the east - smoke concentrations may be even higher than yesterday. Communities to the north and west remain clear with favorable winds from the West and Northwest. We expect this similar fire activity and smoke behavior over the next several days. Additional smoke outlooks for fires to the south and east are available at [outlooks.wildlandfiresmoke.net](http://outlooks.wildlandfiresmoke.net)



Daily AQI Forecast\* for Thursday

Station	Yesterday			Wed 7/24	Comment for Today -- Thu, Jul 25	Forecast*	
	hourly					Thu 7/25	Fri 7/26
	6a	noon	6p				
Detroit Lake					Clear conditions expected today and throughout the week.		
Sweet Home					Expecting clear today and throughout the week.		
Springfield					Clear conditions are expected to continue today and throughout the week.		
La Pine					Increased fire activity and predominant winds will bring in more smoke.		
Sisters					Fire activity impacting area, winds should improve conditions for the evening.		
Oakridge					Increased fire activity is downwind, some smoke may settle in the area midday.		
Bend					Increasing fire activity will likely bring more smoke in the area.		
McKenzie					Clear this morning, some smoke may settle by midday, clearing by late afternoon.		

Issued Jul 25, 2024 by Ali Kamal, Air Resource Advisor ([kamal.ali@epa.gov](mailto:kamal.ali@epa.gov))

Air Quality Index (AQI)	Actions to Protect Yourself
Good	None
Moderate	Unusually sensitive individuals should consider limiting prolonged or heavy exertion.
USG	People within Sensitive Groups* should <b>reduce</b> prolonged or heavy outdoor exertion.
Unhealthy	People within Sensitive Groups* should <b>avoid all</b> physical outdoor activity.
Very Unhealthy	Everyone should avoid prolonged or heavy exertion.
Hazardous	Everyone should avoid any outdoor activity.

\***Disclaimer:** This forecast is based on fine particulates only; ozone is not included. Forecasts may be wrong; use at own risk. Use caution as conditions can change quickly. See your health professional as needed. Smoke sensitive groups should take appropriate precautions.

### Additional Links

[Oregon Smoke Information](https://www.oregonsmoke.org/) -- <https://www.oregonsmoke.org/>

[Fire Incident Information](https://inciweb.wildfire.gov/) -- <https://inciweb.wildfire.gov/>



Issued by Interagency Wildland Fire Air Quality Response Program -- [www.wildlandfiresmoke.net](http://www.wildlandfiresmoke.net)  
 NW Oregon Updates -- <https://outlooks.wildlandfiresmoke.net/outlook/5ae05a65>

\*Smoke and Health Info -- [www.airnow.gov/air-quality-and-health](http://www.airnow.gov/air-quality-and-health)