



Smoke Outlook

NW Oregon - Willamette NF

7/26 - 7/27

Issued by [Wildland Fire Air Quality Response Program](#) on July 26, 2024 at 09:02 AM PDT

Special Statement

This outlook now includes the Coffeepot Fire due to its recent increase in size and smoke production.

Fire

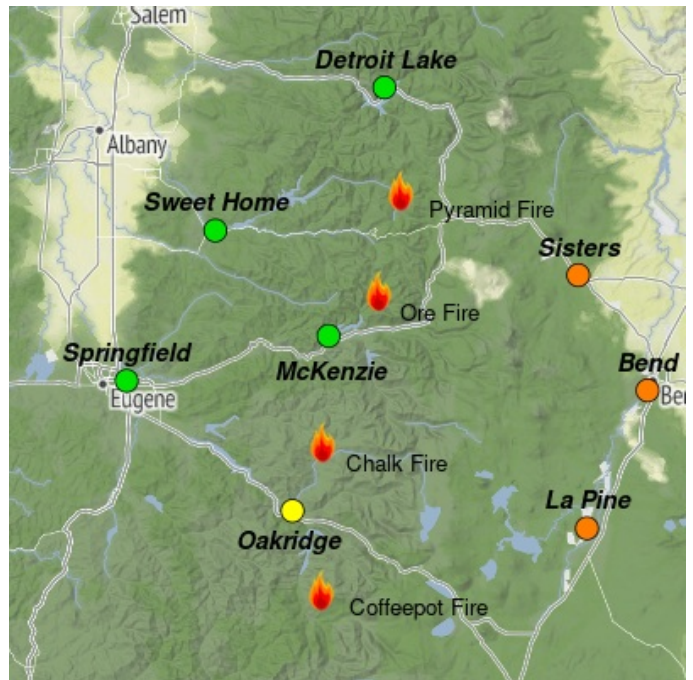
Crews across the Willamette are working to establish control lines and increase containment along the fire perimeters. The Ore Fire increased about 200 acres to 1,223 since yesterday, now with 3% containment. To the south, Chalk is reporting 2,916 acres, an increase of about 200 acres, and the Coffeepot is at 1,687 acres, about 350 acres in growth since yesterday. Those are at 0% containment. The Pyramid Fire is reporting 615 acres and increased to 5% containment.

Smoke

This morning, there is good air quality on the eastern boundary of our monitoring area. Winds scoured out the smoke from low lying communities to the east of the fire. Sisters, Bend and La Pine are likely to see smoke return later today due to their proximity to active fires and prevailing winds. Communities to the north and west will remain clear with the absence of any fires upwind of them. We expect this similar fire activity and smoke behavior through the weekend.

Monitor Update

McKenzie smoke monitor reporting an error and was replaced this morning with a new monitor. Please disregard the "unhealthy" conditions yesterday - conditions were "Good" all day.



Daily AQI Forecast* for Friday

Station	Yesterday hourly			Thu 7/25	Comment for Today -- Fri, Jul 26	Forecast*	
	6a	noon	6p			Fri 7/26	Sat 7/27
Detroit Lake	[Bar chart showing low smoke levels]			●	Clear conditions expected again today and through the weekend.	●	●
Sweet Home	[Bar chart showing low smoke levels]			●	Expecting clear conditions today and through the weekend.	●	●
Springfield	[Bar chart showing low smoke levels]			●	Clear conditions are expected to continue today and through the weekend.	●	●
Oakridge	[Bar chart showing low smoke levels]			●	Clear overnight, Chalk Fire may have smoke settle midday.	●	●
Sisters	[Bar chart showing moderate smoke levels]			●	Fire activity impacting area, winds should improve conditions for the evening.	●	●
Bend	[Bar chart showing moderate smoke levels]			●	Good clearing of the smoke yesterday, but active fires may return today.	●	●
La Pine	[Bar chart showing high smoke levels]			●	Increased fire activity and predominant winds will bring in more smoke.	●	●
McKenzie	[Bar chart showing high smoke levels]			●	Monitor Replaced. Yesterday saw GOOD air quality, will likely continue today.	●	●

Issued Jul 26, 2024 by Ali Kamal, Air Resource Advisor (kamal.ali@epa.gov)

Air Quality Index (AQI)	Actions to Protect Yourself
● Good	None
● Moderate	Unusually sensitive individuals should consider limiting prolonged or heavy exertion.
● USG	People within Sensitive Groups* should reduce prolonged or heavy outdoor exertion.
● Unhealthy	People within Sensitive Groups* should avoid all physical outdoor activity.
● Very Unhealthy	Everyone should avoid prolonged or heavy exertion.
● Hazardous	Everyone should avoid any outdoor activity.

***Disclaimer:** This forecast is based on fine particulates only; ozone is not included. Forecasts may be wrong; use at own risk. Use caution as conditions can change quickly. See your health professional as needed. Smoke sensitive groups should take appropriate precautions.

Additional Links

[Oregon Smoke Information](https://www.oregonsmoke.org/) -- <https://www.oregonsmoke.org/>

[Fire Incident Information](https://inciweb.wildfire.gov/) -- <https://inciweb.wildfire.gov/>



Issued by Interagency Wildland Fire Air Quality Response Program -- www.wildlandfiresmoke.net

NW Oregon Updates -- <https://outlooks.wildlandfiresmoke.net/outlook/5ae05a65>

*Smoke and Health Info -- www.airnow.gov/air-quality-and-health