



**U.S. Department of Agriculture, U.S. Forest Service  
San Juan National Forest  
Pagosa Ranger District**

**Trail Springs Fire Area, Trail, and Road Closure**

**PROHIBITIONS**

Pursuant to 16 U.S.C. § 551 and 36 C.F.R. § 261.50 (a) and (b), the following are prohibited on the National Forest System (NFS) lands, roads, and trails in the Pagosa Ranger District, San Juan National Forest, described below and shown on the attached map incorporated into this Order as Exhibit A (the “Described Area, Roads, and Trails”):

1. Going into or being upon the Described Area. 36 C.F.R. § 261.52(e).
2. Being on the Described Roads. 36 C.F.R. § 261.54(e).
3. Being on the Described Trails. 36 C.F.R. § 261.55(a).

**EXEMPTIONS**

Pursuant to 36 C.F.R. § 261.50(e), the following persons are exempt from this Order:

1. Persons with Forest Service Permit No. FS-7700-48 (Permit for Use of Roads, Trails, or Areas Restricted by Regulation or Order), specifically exempting them from this Order or a written determination by a Forest Service authorized officer that a permit is not required under 36 C.F.R. § 251.50(e)(1) or (2).
2. Any Federal, State, or Local Officer, or member of an organized rescue or firefighting force in the performance of an official duty.

**DESCRIBED AREA, ROADS, AND TRAILS**

The Described Area is in Archuleta County, Colorado and is all NFS lands within the following boundaries: beginning at the intersection of East Monument Road (NFS Road 630) and Devil Creek Trail (NFS Trail 603), extending south on NFS Trail 603 to its terminus at the private property boundary; then, continuing east and south along the private property boundary to its intersection with Snow Ranch Road (NFS Road 628); then, extending south on NFS Road 628 to its intersection with Snow Ranch Trail (NFS Trail 704); then, extending north on NFS Trail 704 to its intersection with Snow Springs Trail (NFS Trail 605); then, extending north on NFS Trail 605 to its intersection with Beaver Lakes Trail (NFS Trail 604); then, extending north on NFS Trail 604 to its intersection with Devil Mountain Trail (NFS Trail 600); then, extending east on NFS Trail 600, but excluding the trail itself, to its intersection with Piedra Stock Drive Trail (NFS

Trail 583); then, extending south on NFS Trail 583 but excluding the trail itself, to its intersection with East Monument Road (NFS Road 630); then, extending east on NFS Road 630 to its intersection with Devil Creek Trail (NFS Trail 603, but excluding the road segment itself.

The Described Area is in Sections 3-10,15-21, 29-32, Township 35 North, Range 3 West; Sections 1, 11, 12, 13, 24, Township 35 North, Range 4 West; and, Sections 31, 32, Township 36 North, Range 3 West; New Mexico P.M.

The Described Roads are the following NFS roads located within or bordering the Described Area:

- The segment of East Monument Road (NFS 630) between Piedra Stock Drive Trail (NFS Trail 583) and its western terminus.
- The segment of Snow Ranch Road (NFS 628) between the private property boundary and its intersection with Snow Ranch Trail (NFS Trail 704).

The segment of East Monument Road (NFS 630) between its intersection with Piedra Stock Drive Trail (NFS Trail 583) and Devil Creek Trail (NFS Trail 603) will remain open.

The Described Trails are the following NFS trails within or bordering the Described Area:

- Devil Creek Trail (NFS Trail 603), Snow Ranch Trail (NFS Trail 704); Snow Springs Trail (NFS 605); Trail Spring ATV Trail (NFS Trail 320), Beaver Lakes Trail (NFS Trail 604), Middle Mountain Trail (NFS Trail 654), Hotz Spring Trail (NFS Trail 317), and Connection Trail (NFS Trail 582).

The segment of Devil Mountain Trail (NFS Trail 600) between Beaver Lakes Trail (NFS 604) and Piedra Stock Drive Trail (NFS Trail 583), and the segment of Piedra Stock Drive Trail (NFS 583) between Devil Mountain Trail (NFS Trail 600) and East Monument Road (NFS Road 630) will remain open.

## **PURPOSE**

The purpose of this Order is to protect public health and safety during the ongoing Trail Springs Fire.

## **IMPLEMENTATION**

1. This Order shall be in effect from November 7, 2023, at 12:00 PM through December 31, 2023, at 5:00PM, unless rescinded.
2. A map identifying the Described Area, Roads, and Trails is attached and made part of this Order as Exhibit A. For a digital version of this Order and Exhibit A, go to <https://www.fs.usda.gov/alerts/sanjuan/alerts-notice>.
3. Unless otherwise expressly defined in this Order, the terms used in this Order are defined by the regulations of the Secretary of Agriculture, 36 C.F.R. Chapter II, Parts 200-299. If there are terms in this Order that are not expressly defined in the Order or 36 C.F.R. Chapter

**Order Number: 02-13-06-23-12**

II, Parts 200-299, their meaning shall be determined by their plain language definitions.

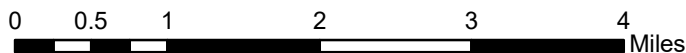
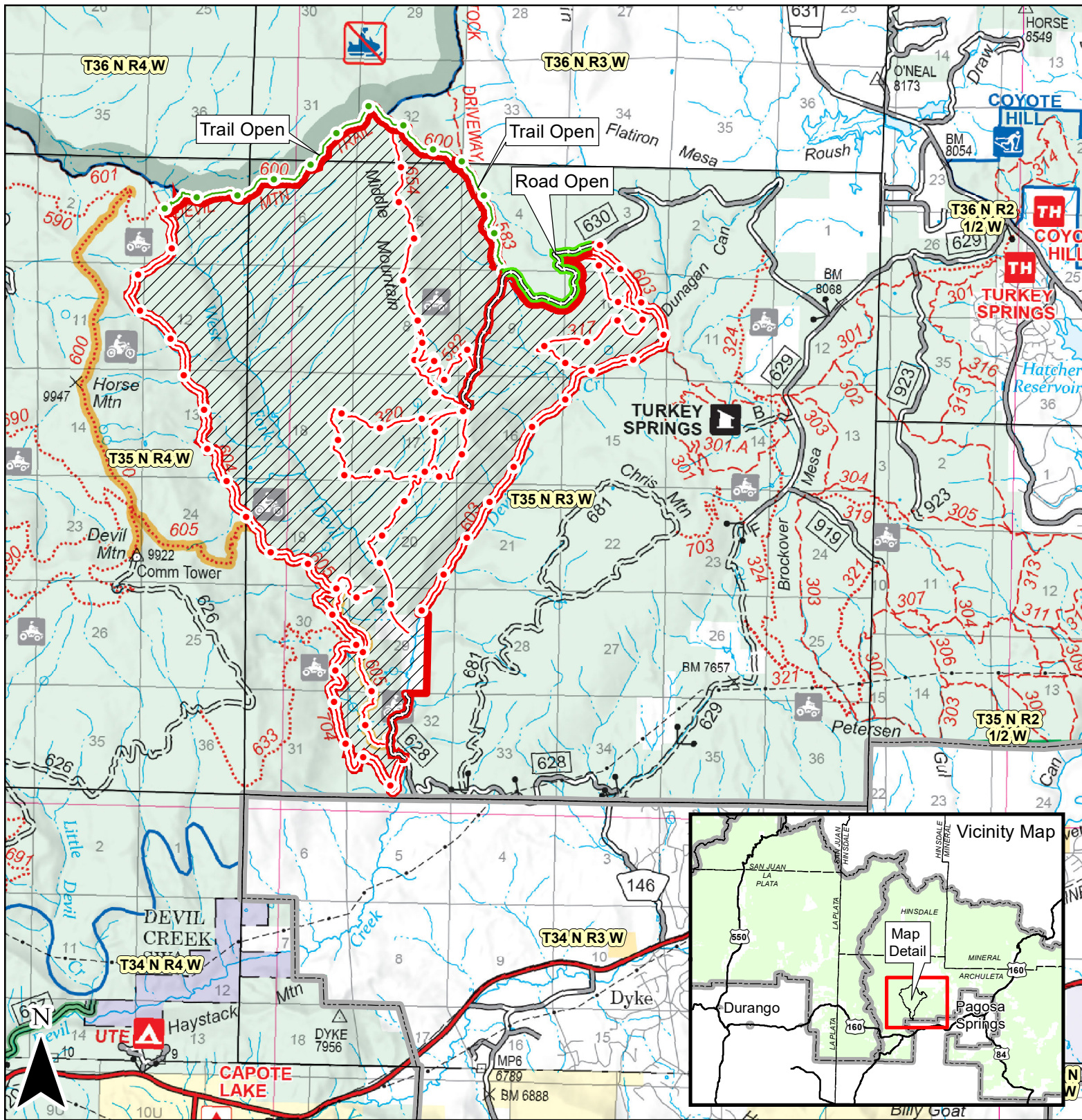
4. A violation of the above prohibitions is punishable as a Class B misdemeanor by a fine of not more than \$5,000 for individuals and \$10,000 for organizations, or by imprisonment for not more than six months, or both. 16 U.S.C. § 551; 18 U.S.C. §§ 3559, 3571, and 3581.
5. Contact the Pagosa Ranger District in Pagosa Springs, Colorado, (970) 264-2268, and the San Juan National Forest Supervisor's Office in Durango, Colorado, (970) 247-4874, for more information about this Order.
6. This Order supersedes any previous Orders prohibiting the same or similar acts in or on the same Described Area, Roads, and Trails including Order Number 02-13-06-23-11.

Signed and issued on November 3, 2023.






---

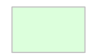

Forest Supervisor





**San Juan National Forest**  
**Pagosa Ranger District**  
**Order # 02-13-06-23-12**  
**Exhibit A**  
**Trail Springs Area, Road**  
**and Trail Closure**

-  Described Area
-  Described Trails - CLOSED
-  Described Trails - OPEN
-  Described Roads - CLOSED
-  Described Road - OPEN

-  National Forest Land
-  Ranger District Boundary