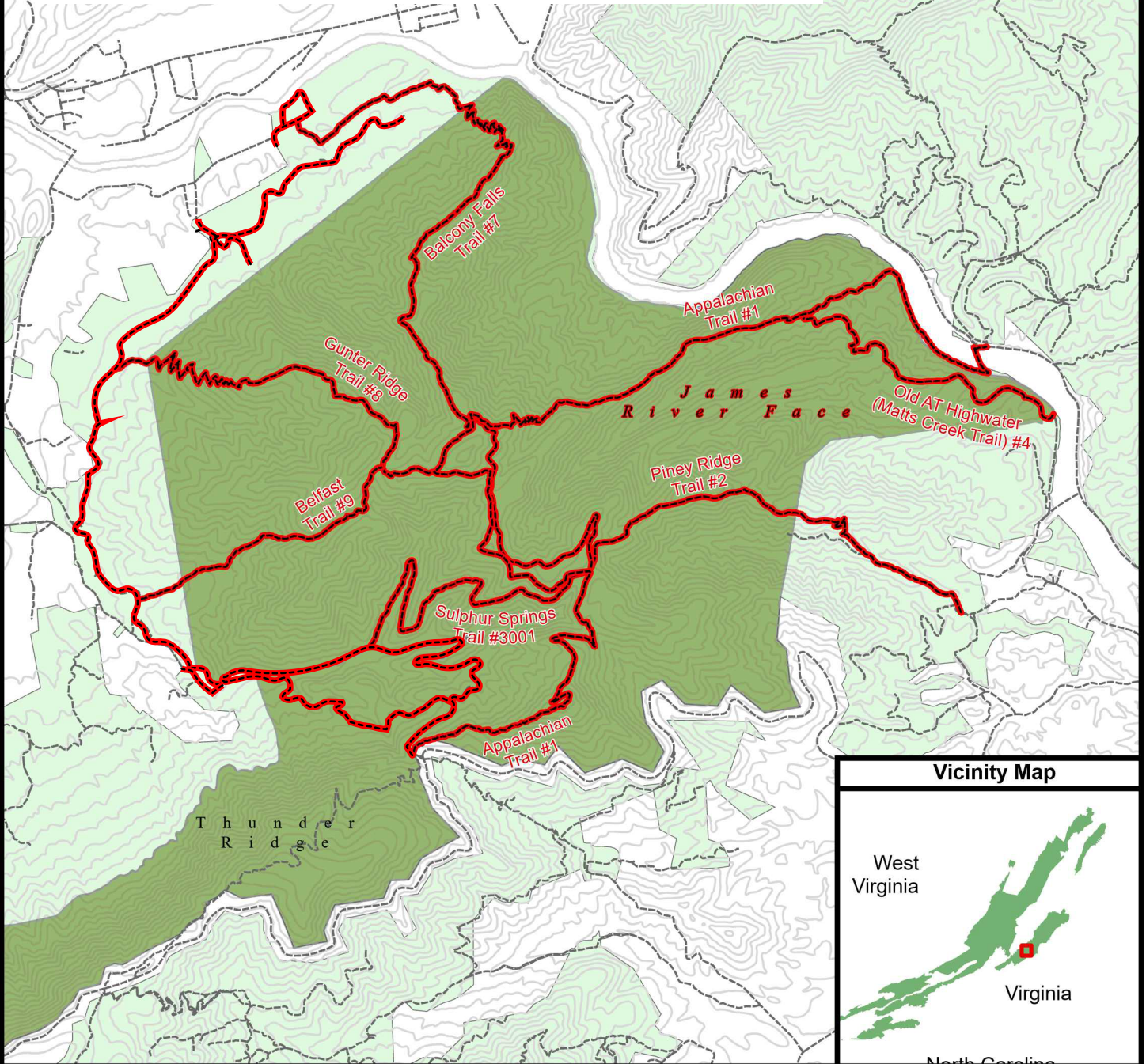


Matts Creek Fire Closure Map

11/18/2023



References

Data acquired from a variety of sources of differing accuracy, precision and reliability. Features represented by the data may not represent accurate geographic locations.

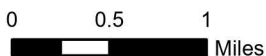
Disclaimer

The USDA Forest Service makes no warranty, expressed or implied regarding the data displayed on this map, and reserves the right to correct, update, modify, or replace this information without notification.



Trail Status

- Open
- Closed
- Designated Wilderness
- National Forest



Map Revision Date:
Wednesday, November 15, 2023

Vicinity Map



George Washington Jefferson N. F. Area Closure : Matt's Creek Fire

U.S. Forest Service - Southern Region
George Washington and Jefferson National Forests

For more information please contact:
George Washington and Jefferson NFs
5162 Valleypointe Parkway
Roanoke, Virginia 24019
www.fs.usda.gov/gwj

