

123°48'W 123°45'W 123°42'W 123°39'W 123°36.01'W 123°33'W 123°30'W 123°27'W 123°24'W 123°21'W 123°18'W 123°15'W

41°42'N 41°38.99'N 41°36'N 41°33'N 41°30'N 41°27'N 41°23.99'N 41°21'N 41°18'N 41°15'N 41°12'N

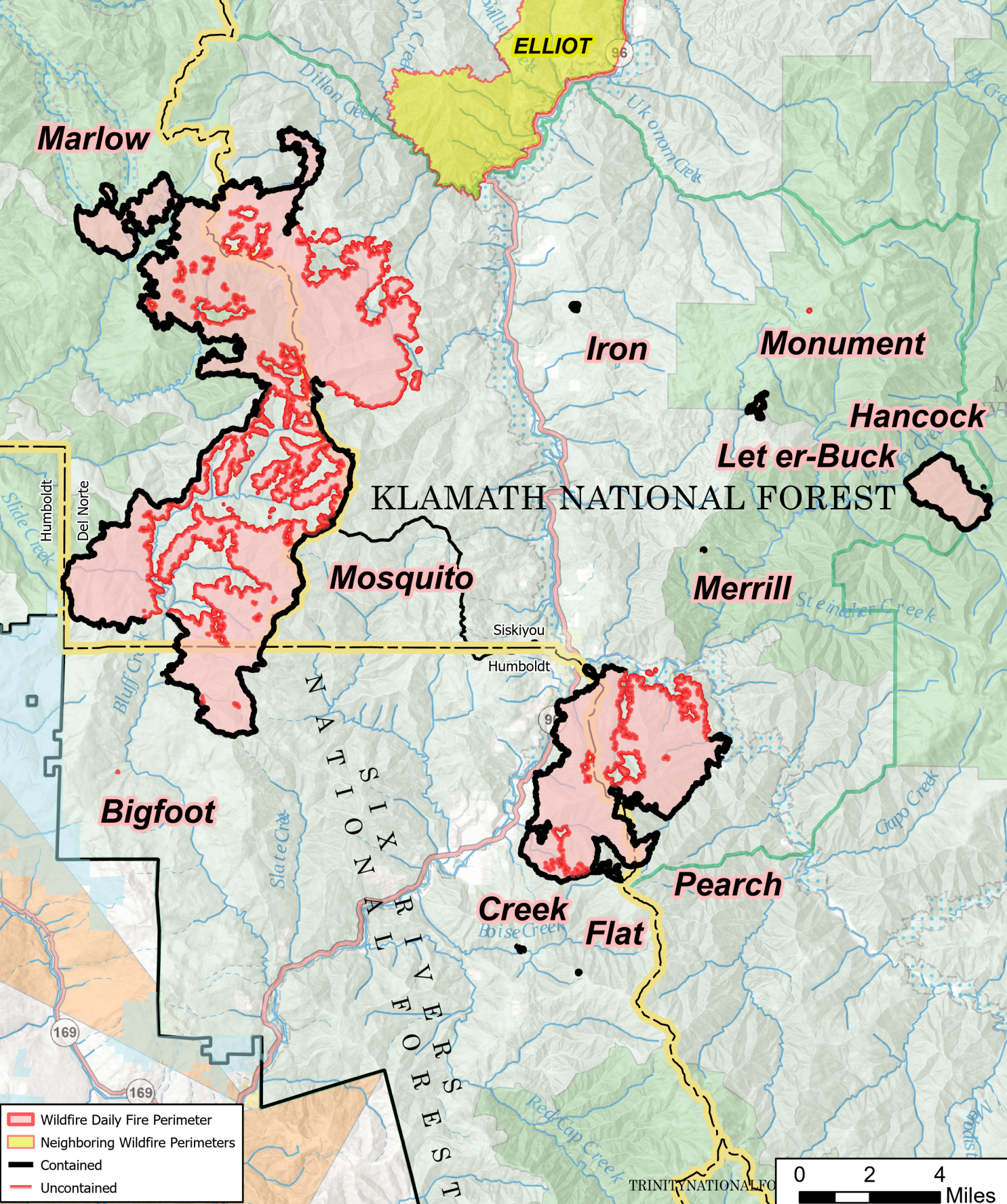


Public Information

2023 SRF Lightning Complex
CA-SRF-000986

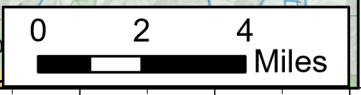
10/06/2023 Day

49,510 acres at 10/04/2023 @ 2151 hrs PDT



KLAMATH NATIONAL FOREST

- Wildfire Daily Fire Perimeter
- Neighboring Wildfire Perimeters
- Contained
- Uncontained



123°48'W 123°45'W 123°42'W 123°39'W 123°36.01'W 123°33'W 123°30'W 123°27'W 123°24'W 123°21'W 123°18'W 123°15'W