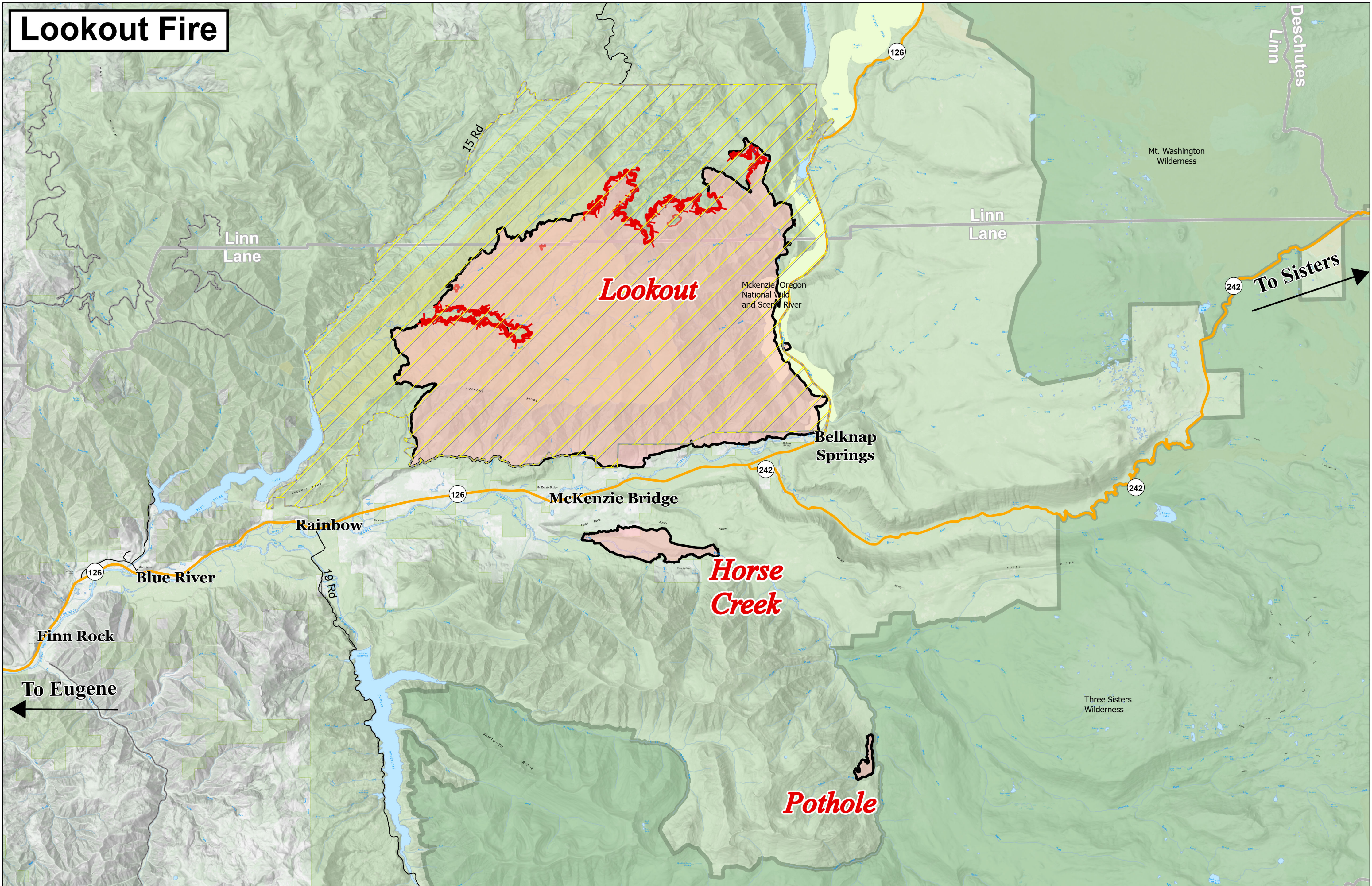

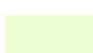

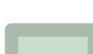

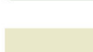



Lookout Fire



Information

Lookout
 ORWIF-230327
 10/4/2023
 25,751 acres at 10/01/2023 @ 0039
 Acres from IR & GPS

- | | |
|--|---|
|  Closure - Area |  Wild and Scenic River |
|  Contained |  Wilderness |
|  Uncontained |  H J Andrews Experimental Forest |
|  Fire Area | |

