



Smoke Outlook

SW Oregon Anvil and Flat Fires

10/09 - 10/10

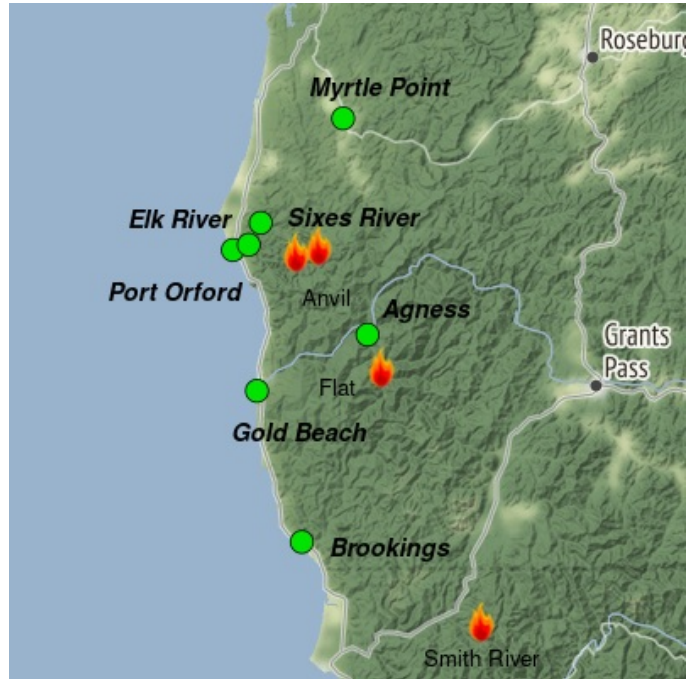
Issued by Wildland Fire Air Quality Response Program on October 09, 2023 at 08:09 AM PDT

Fire

The Anvil Fire is still 22,170 acres while containment rose to 60%. The Flat Fire also holds at 34,242 acres with 93% containment. Fire behavior was muted yesterday but still there are isolated smoldering dead logs and stumps within the edges of the current perimeter. Moderate burning conditions will not cause the fire to grow today nor over the next few days with rain expected.

Smoke

Today, the air quality along the south coastal region of Oregon is expected to remain in the GOOD range. Smoke emissions have significantly decreased, and consequently, there should be no adverse effects on air quality or visibility on the roadways and highways.



Daily AQI Forecast* for Monday

| Station | Yesterday | | | Sun 10/08 | Comment for Today -- Mon, Oct 09 | Forecast* | |
|--------------|----------------|------|----|--------------|--|--------------|--------------|
| | hourly | | | | | Mon 10/09 | Tue 10/10 |
| | 6a | noon | 6p | | | | |
| Brookings | | | | | GOOD AQ throughout the forecast area | | |
| Gold Beach | No hourly data | | | | Good AQ for the Gold Beach area all day | | |
| Agness | No hourly data | | | | No smoke expected from the Flat Fire | | |
| Port Orford | No hourly data | | | | smoke from the Anvil Fire will not affect town today | | |
| Myrtle Point | No hourly data | | | | Overall GOOD AQ with little impact from the Anvil Fire | | |
| Sixes River | | | | | Expect a little smoke in the river drainage in the morning | | |
| Elk River | | | | | Some drainage smoke expected. | | |

Issued Oct 09, 2023 by Rob Fisher, Air Resource Advisor, RobertF64@vt.edu

| Air Quality Index (AQI) | Actions to Protect Yourself |
|-------------------------|---|
| Good | None |
| Moderate | Unusually sensitive individuals should consider limiting prolonged or heavy exertion. |
| USG | People within Sensitive Groups* should reduce prolonged or heavy outdoor exertion. |
| Unhealthy | People within Sensitive Groups* should avoid all physical outdoor activity. |
| Very Unhealthy | Everyone should avoid prolonged or heavy exertion. |
| Hazardous | Everyone should avoid any outdoor activity. |

***Disclaimer:** This forecast is based on fine particulates only; ozone is not included. Forecasts may be wrong; use at own risk. Use caution as conditions can change quickly. See your health professional as needed. Smoke sensitive groups should take appropriate precautions.

Additional Links

[Inciweb](https://inciweb.nwccg.gov/) -- <https://inciweb.nwccg.gov/>

[Oregon Smoke Blog & Air Quality](https://www.oregonsmoke.org/) -- <https://www.oregonsmoke.org/>

[Fire & Smoke Map](https://fire.airnow.gov/) -- <https://fire.airnow.gov/>

[Oregon TripCheck](https://tripcheck.com/DynamicReports/Report/RoadConditions) -- <https://tripcheck.com/DynamicReports/Report/RoadConditions>



Issued by Interagency Wildland Fire Air Quality Response Program -- www.wildlandfiresmoke.net

SW Oregon Updates -- <https://outlooks.wildlandfiresmoke.net/outlook/b74901f7>

*Smoke and Health Info -- www.airnow.gov/air-quality-and-health