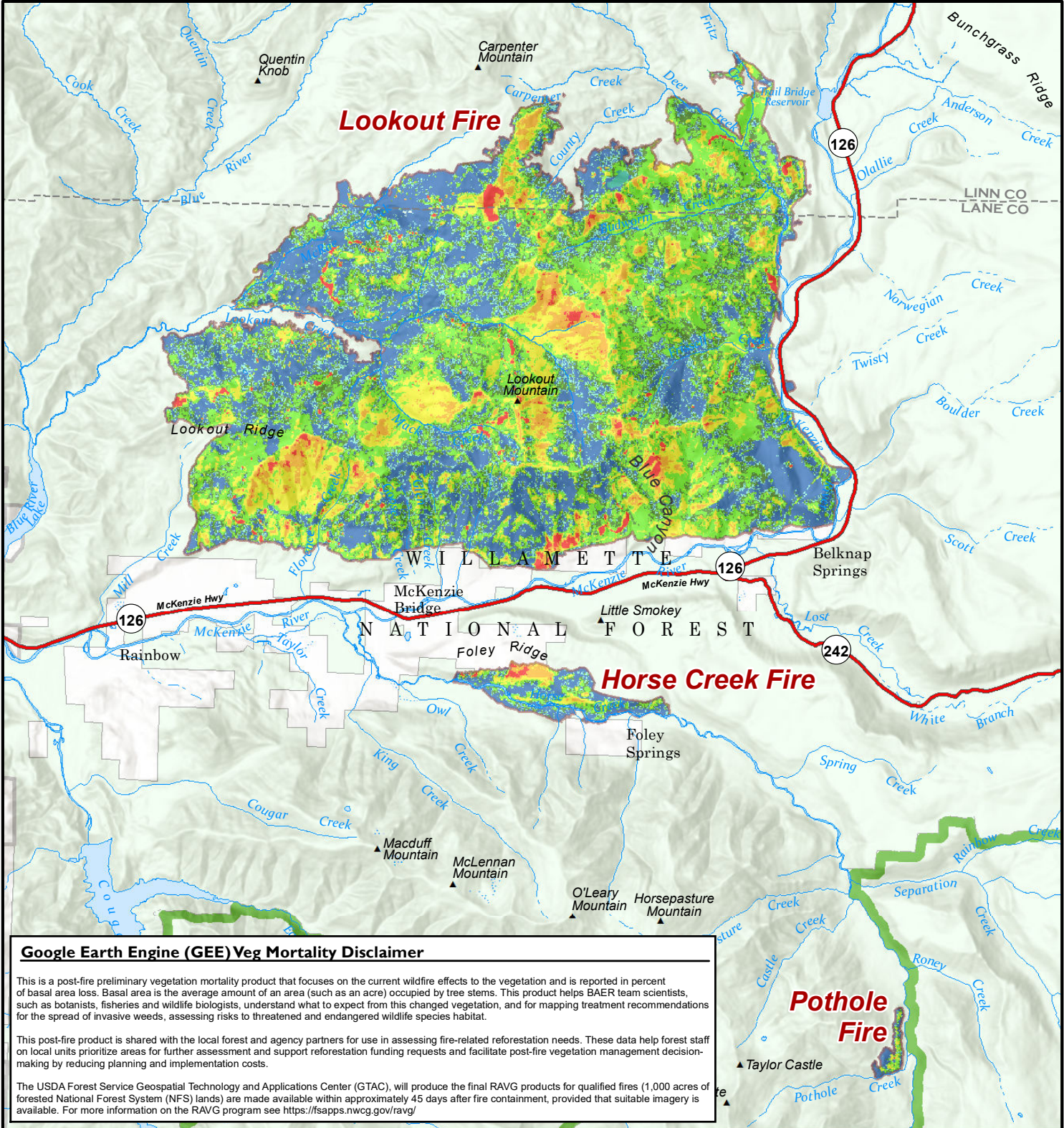




# Vegetation Mortality

## Lookout Fire BAER - Willamette National Forest

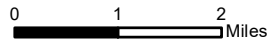


### Google Earth Engine (GEE) Veg Mortality Disclaimer

This is a post-fire preliminary vegetation mortality product that focuses on the current wildfire effects to the vegetation and is reported in percent of basal area loss. Basal area is the average amount of an area (such as an acre) occupied by tree stems. This product helps BAER team scientists, such as botanists, fisheries and wildlife biologists, understand what to expect from this changed vegetation, and for mapping treatment recommendations for the spread of invasive weeds, assessing risks to threatened and endangered wildlife species habitat.

This post-fire product is shared with the local forest and agency partners for use in assessing fire-related reforestation needs. These data help forest staff on local units prioritize areas for further assessment and support reforestation funding requests and facilitate post-fire vegetation management decision-making by reducing planning and implementation costs.

The USDA Forest Service Geospatial Technology and Applications Center (GTAC), will produce the final RAVG products for qualified fires (1,000 acres of forested National Forest System (NFS) lands) are made available within approximately 45 days after fire containment, provided that suitable imagery is available. For more information on the RAVG program see <https://fsapps.nwgc.gov/ravg/>



### USDA Forest Service Disclaimer

This product is a product of USFS BAER rapid assessment. Further information concerning the accuracy and appropriate uses of this data may be obtained from the various sources. The USDA Forest Service, makes no warranty, expressed or implied, including the warranties of merchantability and fitness for a particular purpose, nor assumes any legal liability or responsibility for the accuracy, reliability, completeness or utility of these geospatial data, or for the improper or incorrect use of these geospatial data. These geospatial data and related maps or graphics are not legal documents and are not intended to be used as such. The data and maps may not be used to determine title, ownership, legal descriptions, boundaries, legal jurisdiction, or restrictions that may be in place on either public or private land. Natural hazards may or may not be depicted on the data and maps, and land users should exercise due caution. The data is dynamic and may change over time. The user is responsible to verify the limitations of the geospatial data and to use the data accordingly.

### Basal Area Mortality

- 0% BA mortality
- 1 - 10% BA mortality
- 11 - 25% BA mortality
- 26 - 50% BA mortality
- 51 - 75% BA mortality
- 76 - 90% BA mortality
- 91 - 100% BA mortality

- Fire Perimeter
- National Forest
- National Forest Wilderness Boundary

