

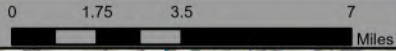


# Information

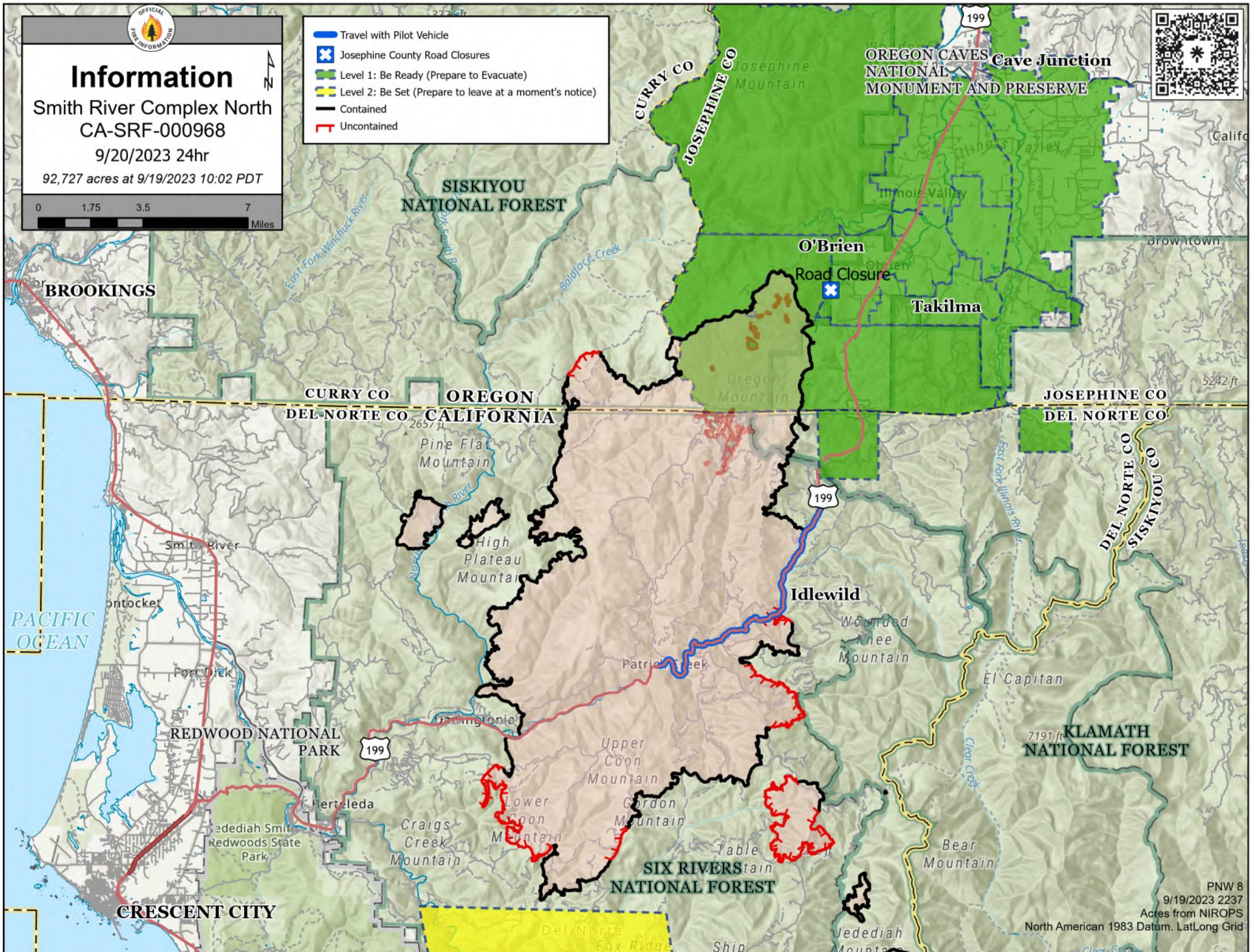
Smith River Complex North  
CA-SRF-000968

9/20/2023 24hr

92,727 acres at 9/19/2023 10:02 PDT



- Travel with Pilot Vehicle
- Josephine County Road Closures
- Level 1: Be Ready (Prepare to Evacuate)
- Level 2: Be Set (Prepare to leave at a moment's notice)
- Contained
- Uncontained



PNW 8  
9/19/2023 2237  
Acres from NIROPS  
North American 1983 Datum. Lat/Long Grid