

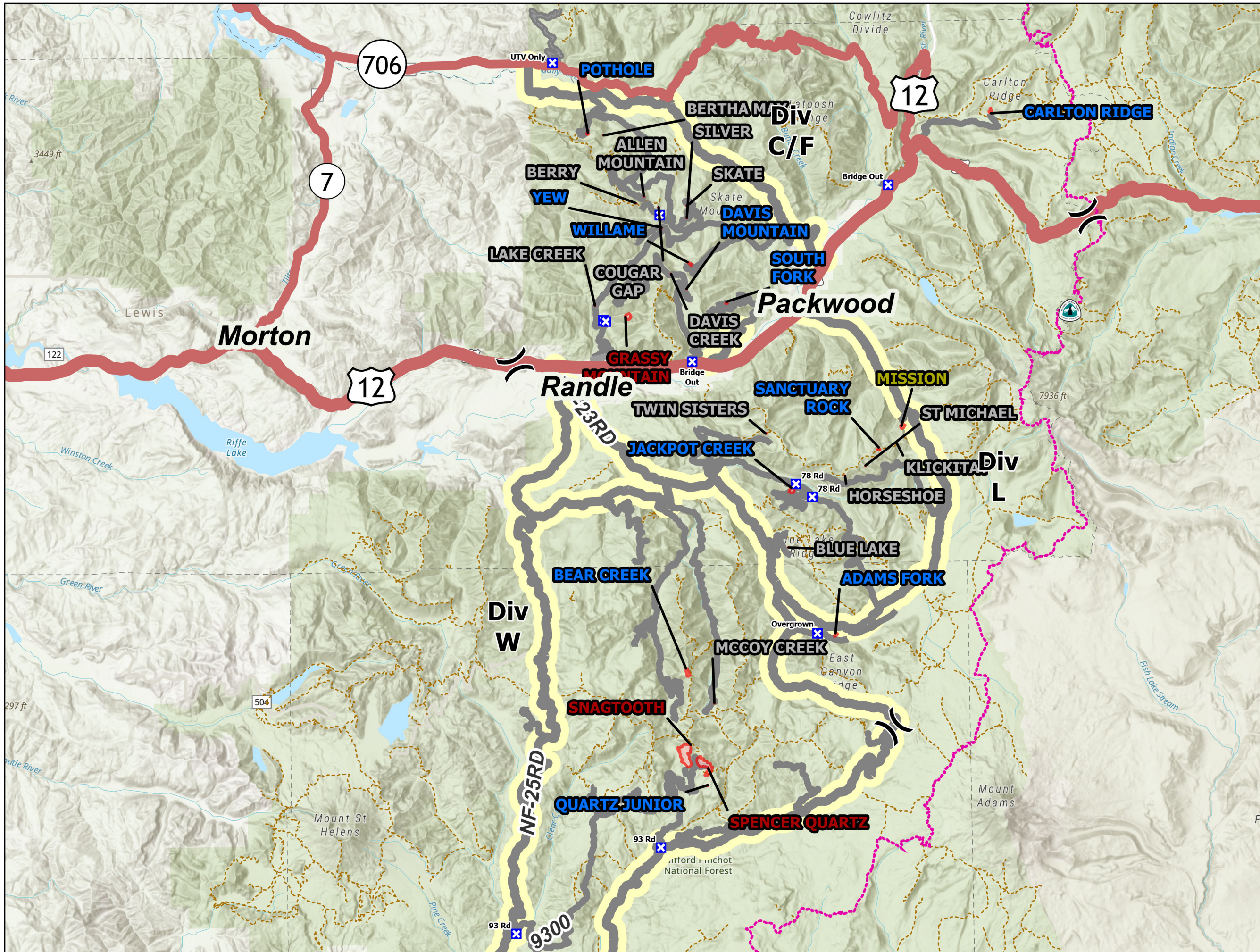
**PUBLIC INFORMATION**

**COWLITZ COMPLEX**

WA-GPF-001297

9/21/2023

- (X) Division Break
- ⊗ Closure
- Pacific Crest National Scenic Trail
- ▭ Wildfire Daily Fire Perimeter



**DIV C/F**

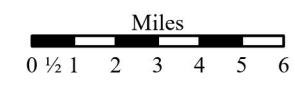
Incident Name	Acres	Status
GRASSY MOUNTAIN	39.49	ACTIVE
CARLTON RIDGE	15.00	CONTROLLED
DAVIS MOUNTAIN	0.54	CONTROLLED
POTHOLE	5.00	CONTROLLED
SOUTH FORK	15.00	CONTROLLED
WILLAME	8.00	CONTROLLED
YEW	2.00	CONTROLLED
ALLEN MOUNTAIN	0.25	OUT
BERRY	0.25	OUT
BERTHA MAY	0.10	OUT
COUGAR GAP	0.10	OUT
DAVIS CREEK	0.10	OUT
DEER CREEK	4.00	OUT
LAKE CREEK	0.10	OUT
SILVER	0.10	OUT
SKATE	0.10	OUT

**DIV L**

Incident Name	Acres	Status
MISSION	22.00	CONTAINED
SANCTUARY ROCK	6.00	CONTROLLED
ADAMS FORK	9.00	CONTROLLED
JACKPOT CREEK	32.00	CONTROLLED
BLUE LAKE	0.20	OUT
HORSESHOE	0.20	OUT
KLICKITAT	0.50	OUT
ST MICHAEL	0.25	OUT
TWIN SISTERS	0.50	OUT

**DIV W**

Incident Name	Acres	Status
SNAGTOOTH	317.97	ACTIVE
SPENCER QUARTZ	202.67	ACTIVE
BEAR CREEK	32.00	CONTROLLED
QUARTZ JUNIOR	1.00	CONTROLLED
MCCOY CREEK	0.25	OUT



1:290,000  
Last Updated 9/20/2023 23:32