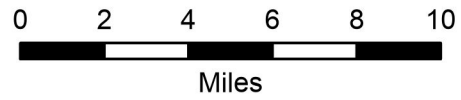


# Public Information

COWLITZ COMPLEX  
WA-GPF-001297  
9/15/2023



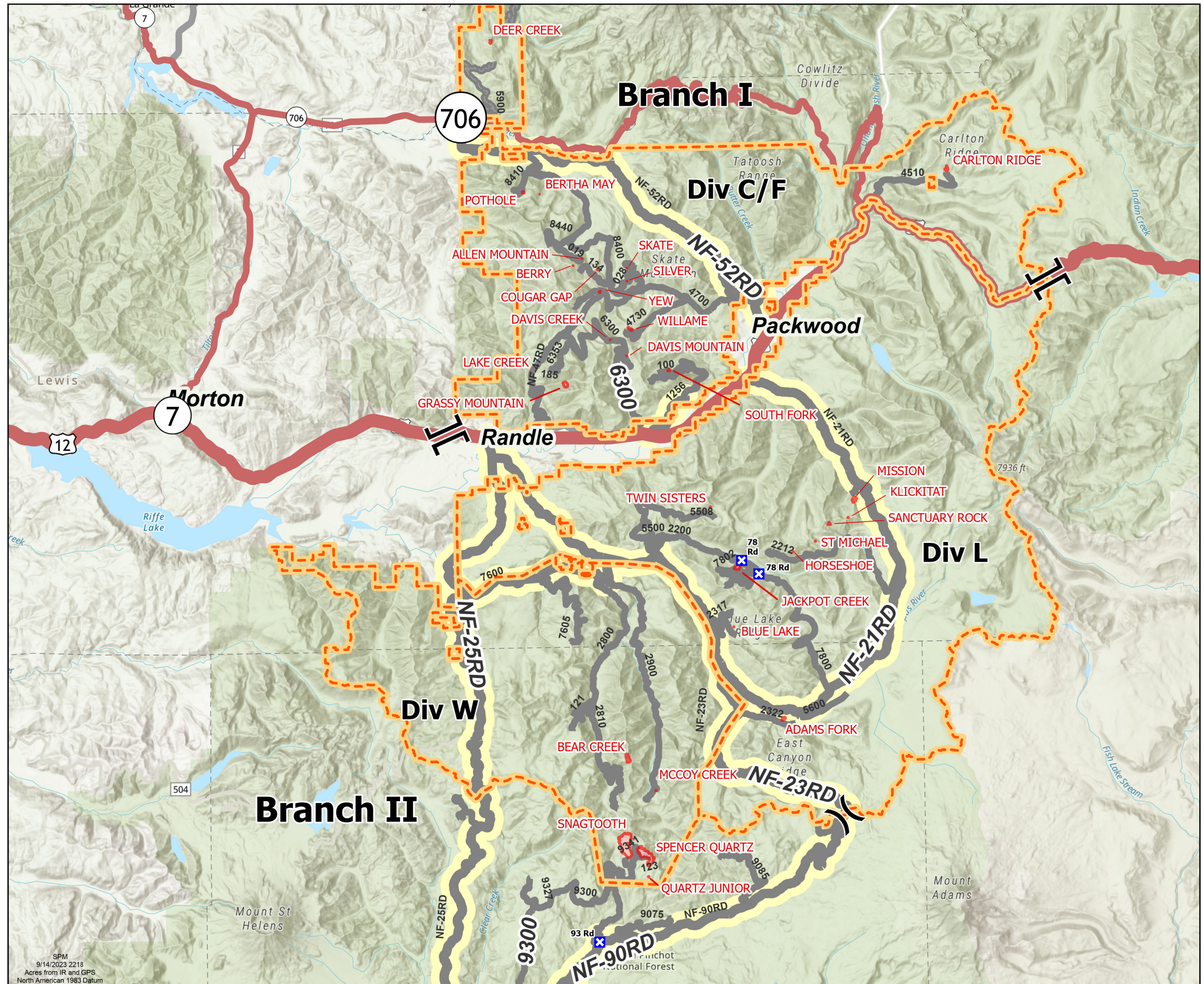
- (X) Division Break
- (||) Branch Break
- (X) Closure
- Wildfire Perimeter
- Initial Attack Responsibility



Division C/F	Incident Name	Acres	Status
	ALLEN MOUNTAIN	0.25	OUT
	BERRY	0.25	OUT
	BERTHA MAY	0.1	OUT
	CARLTON RIDGE	15	CONTROLLED
	COUGAR GAP	0.1	OUT
	DAVIS CREEK	0.1	OUT
	DAVIS MOUNTAIN	0.54	CONTROLLED
	DEER CREEK	4	OUT
	GRASSY MOUNTAIN	28.016103	ACTIVE
	LAKE CREEK	0.1	OUT
	POTHOLE	5	CONTROLLED
	SILVER	0.1	OUT
	SKATE	0.1	OUT
	SOUTH FORK	15	CONTROLLED
WILLAME	8	CONTAINED	
YEW	2	CONTAINED	

Division L	Incident Name	Acres	Status
	BLUE LAKE	0.2	OUT
	TWIN SISTERS	0.5	OUT
	MISSION	22	CONTAINED
	KLICKITAT	0.5	OUT
	ADAMS FORK	9	CONTROLLED
	JACKPOT CREEK	32	CONTROLLED
	ST MICHAEL	0.25	OUT
HORSESHOE	0.2	OUT	
SANCTUARY ROCK	6	CONTAINED	

Division W	Incident Name	Acres	Status
	MCCOY CREEK	0.25	OUT
	SNAGTOOTH	308.334973	ACTIVE
	BEAR CREEK	32	CONTROLLED
	SPENCER QUARTZ	187.794832	ACTIVE
QUARTZ JUNIOR	1	ACTIVE	



SPM  
9/14/2023 2218  
Acres from IR and GPS  
North American 1983 Datum