





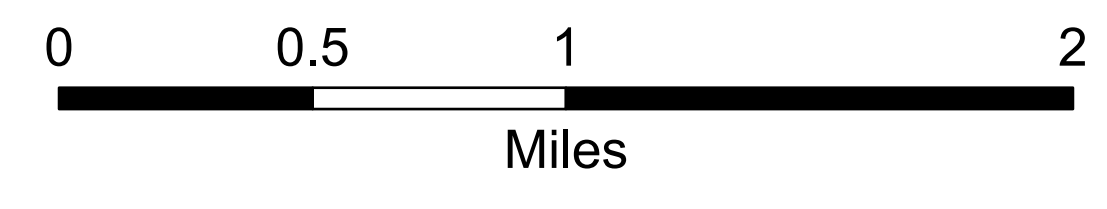
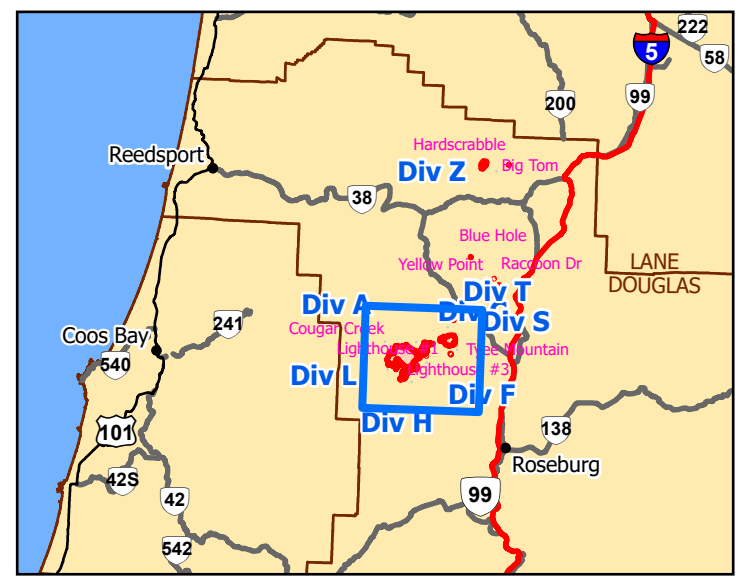
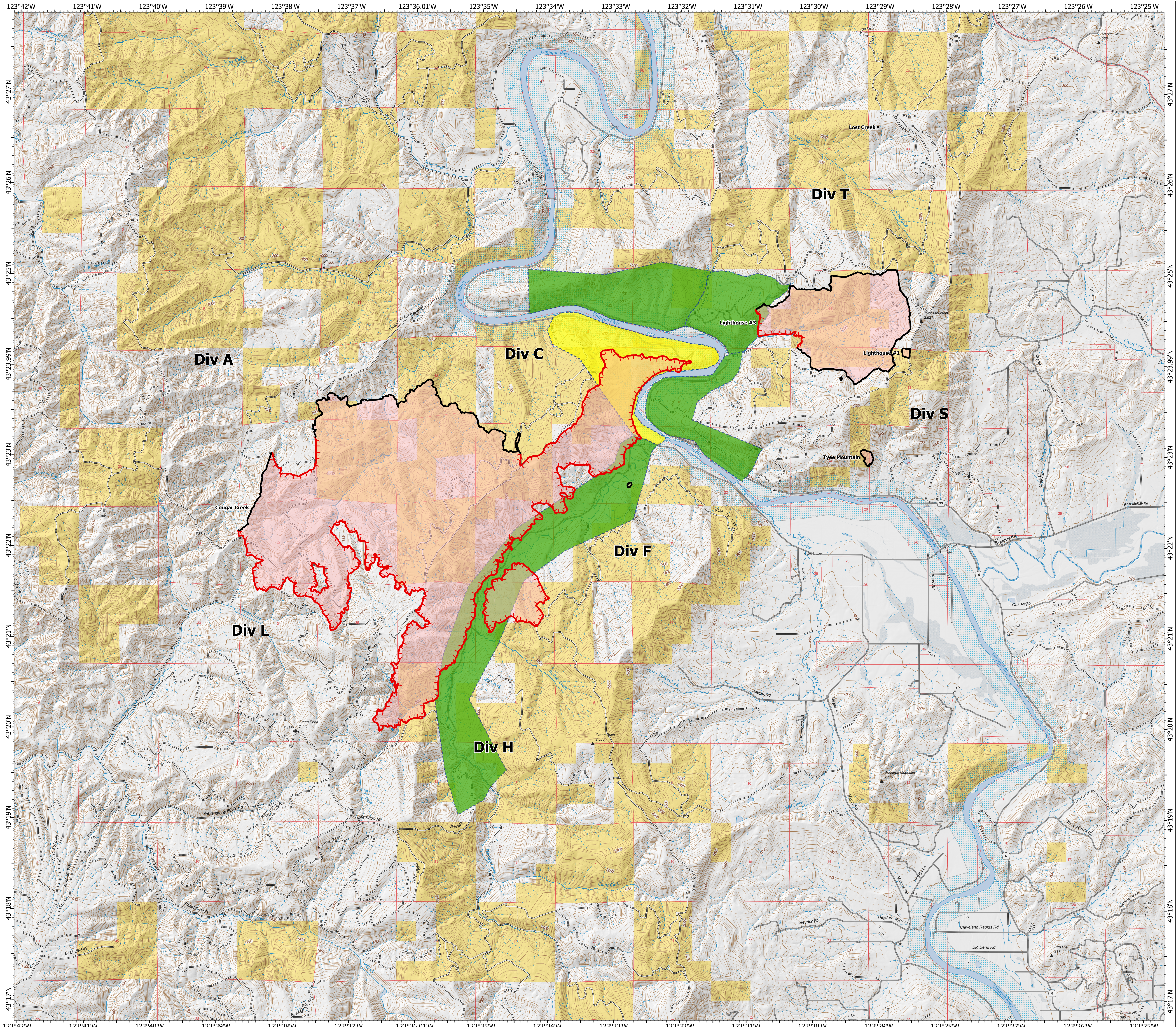


Evacuation Map

Tyee Ridge Complex
OR731S-314-24
Sept. 9, 2023

7854 acres at 09/08/2023 2330

-  Level 1: Be Ready (Prepare to Evacuate)
-  Level 2: Be Set (Prepare to leave at a moment's notice)
-  Level 3: Go (Leave immediately)
-  Contained
-  Uncontained
-  Fire Perimeter



1:24,000 | 09/09/2023 0033
IR/GPS/Hand Drawn
North American 1983 Datum, Lat/Long Grid