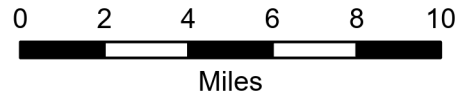


Public Information

Cowlitz Complex
WA-GPF-001297
9/4/2023



- (X) Division Break
- || Branch Break
- ⊠ Closure
- ▭ Wildfire Perimeter
- ▭ Division Boundary

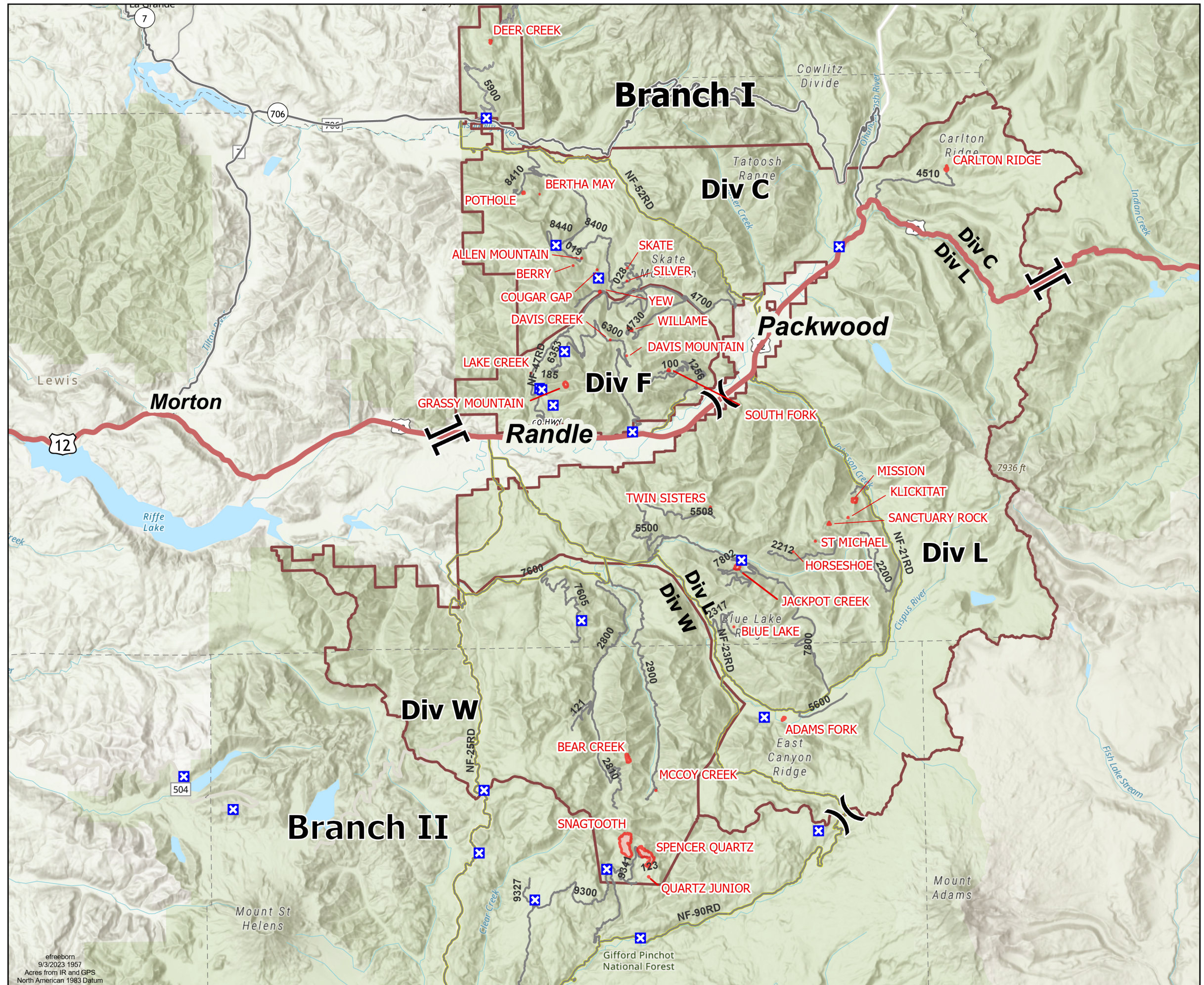


| Division C | | |
|----------------|-------|---------|
| Incident Name | Acres | Status |
| ALLEN MOUNTAIN | 0.25 | OUT |
| BERRY | 0.25 | STAFFED |
| BERTHA MAY | 0.1 | OUT |
| CARLTON RIDGE | 15 | STAFFED |
| COUGAR GAP | 0.1 | OUT |
| DEER CREEK | 4 | STAFFED |
| POTHOLE | 5 | STAFFED |
| SILVER | 0.1 | STAFFED |
| SKATE | 0.1 | STAFFED |
| YEW | 2 | STAFFED |

| Division F | | |
|-----------------|-------|------------|
| Incident Name | Acres | Status |
| SOUTH FORK | 15 | PATROLLING |
| GRASSY MOUNTAIN | 26 | UNSTAFFED |
| WILLAME | 8 | STAFFED |
| DAVIS CREEK | 0.1 | OUT |
| DAVIS MOUNTAIN | 0.54 | PATROLLING |
| LAKE CREEK | 0.1 | OUT |

| Division L | | |
|----------------|-------|-----------|
| Incident Name | Acres | Status |
| BLUE LAKE | 0.2 | OUT |
| TWIN SISTERS | 0.5 | OUT |
| MISSION | 27 | UNSTAFFED |
| KLICKITAT | 0.5 | OUT |
| ADAMS FORK | 9 | STAFFED |
| JACKPOT CREEK | 32 | STAFFED |
| ST MICHAEL | 0.25 | OUT |
| HORSESHOE | 0.2 | OUT |
| SANCTUARY ROCK | 6 | STAFFED |

| Division W | | |
|----------------|-------|------------|
| Incident Name | Acres | Status |
| MCCOY CREEK | 0.25 | PATROLLING |
| SNAGTOOTH | 311 | UNSTAFFED |
| BEAR CREEK | 33 | STAFFED |
| SPENCER QUARTZ | 198 | UNSTAFFED |
| QUARTZ JUNIOR | 1 | STAFFED |



efreeborn
9/3/2023 1957
Acres from IR and GPS
North American 1983 Datum