



Smoke Outlook

Northwest California-Interior Happy Camp Complex

9/13 - 9/14

Issued by Wildland Fire Air Quality Response Program on September 13, 2023 at 09:03 AM PDT

Special Statement

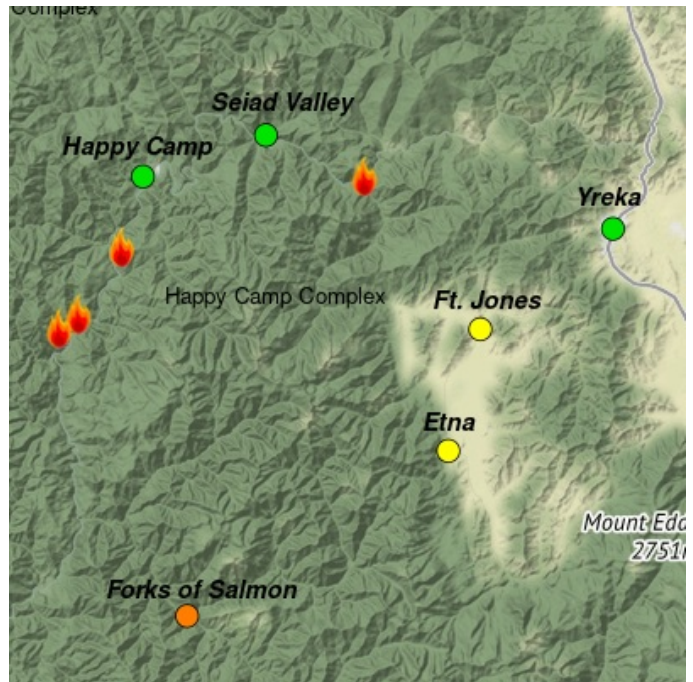
This is a new outlook that focuses on communities near the Happy Camp Complex.

Fire

Fire activity was moderate overnight on the Head, Elliot Fire and the Ufish Fires, but hotter and dryer conditions are expected to make the fire more active. The complex is now 30,746 acres and remains at 57% containment. Additional details on the other neighboring fires in the region are available at inciweb.nwcg.gov.

Smoke

Yesterday, the NE winds cleared out the smoke in the mountain communities and for much of the area and we will likely see improved air quality for most of the day. With hot, dry conditions expected, increased fire activity in the afternoon may bring in smoke overnight.



Daily AQI Forecast* for Wednesday

Station	Yesterday hourly		Tue 9/12	Comment for Today -- Wed, Sep 13	Forecast*	
	6a	noon 6p			Wed 9/13	Thu 9/14
Happy Camp	No hourly data			NE winds will continue keep smoke out of the area for most of the day.	Green	Yellow
Forks of Salmon	No hourly data			NE winds will bring some smoke impacts from the local fires	Orange	Orange
Seiad Valley			Red	Improved conditions with the NE winds, will continue for most of the day	Green	Yellow
Ft. Jones			Red	Improved air quality, increased fire activity may bring more smoke.	Yellow	Orange
Etna			Orange	Overall Moderate with periods of USG with increased fire activity	Yellow	Orange
Yreka			Yellow	Clear this morning and most of the day. Chance of moderate smoke overnight.	Green	Yellow

Issued Sep 13, 2023 by Ali Kamal, Air Resource Advisor (kamal.ali@epa.gov)

Air Quality Index (AQI)	Actions to Protect Yourself
Green - Good	None
Yellow - Moderate	Unusually sensitive individuals should consider limiting prolonged or heavy exertion.
Orange - USG	People within Sensitive Groups* should reduce prolonged or heavy outdoor exertion.
Red - Unhealthy	People within Sensitive Groups* should avoid all physical outdoor activity.
Purple - Very Unhealthy	Everyone should avoid prolonged or heavy exertion.
Dark Purple - Hazardous	Everyone should avoid any outdoor activity.

*Disclaimer: This forecast is based on fine particulates only; ozone is not included. Forecasts may be wrong; use at own risk. Use caution as conditions can change quickly. See your health professional as needed. Smoke sensitive groups should take appropriate precautions.

Additional Links

[California Smoke Blog](https://californiasmokeinfo.blogspot.com/) -- <https://californiasmokeinfo.blogspot.com/>

[Siskiyou Fire and Smoke Information](https://www.co.siskiyou.ca.us/airpollution/page/fire-and-smoke-information) -- <https://www.co.siskiyou.ca.us/airpollution/page/fire-and-smoke-information>

[Smoke Ready California](https://ww2.arb.ca.gov/smokereadycalifornia) -- <https://ww2.arb.ca.gov/smokereadycalifornia>

--



by Interagency Wildland Fire Air Quality Response Program -- www.wildlandfiresmoke.net

Northwest California-Interior Updates -- <https://outlooks.wildlandfiresmoke.net/outlook/9a1fc87b>

*Smoke and Health Info -- www.airnow.gov/air-quality-and-health