



# United States Department of the Interior



BUREAU OF LAND MANAGEMENT  
Coos Bay District Office  
1300 Airport Ln, North Bend Oregon 97459  
<http://www.blm.gov>

## EMERGENCY CLOSURE OF PUBLIC LANDS

**AGENCY:** Bureau of Land Management, Coos Bay District, Oregon.

**ACTION:** Temporary Closure of Public Lands

**SUMMARY:** Pursuant to 43 CFR 9268.3(d) and 43 CFR 8364.1, the Bureau of Land Management (BLM) hereby provides notice that effective immediately, the public lands described below are closed to all forms of public access. This action is in response to large fires currently active in the area. The BLM is closing public lands in order to reduce conflicts with emergency crews and allow for fire suppression and burned area site recovery, as well as to ensure public safety, land health, and resource integrity.

**AFFECTED AREA:** Both the Edson Creek and Sixes River Recreation sites and campgrounds, which are managed by the BLM, and located off of the Sixes River Road, near Port Orford, OR. The following BLM administered Lands are affect by this closure:

BLM managed lands in T32S R14W Sections 6, 7, 11, and 12. Please see attached map.

**DATES:** This closure will be effective as of 5:00pm Pacific Daylight Time on September 14, 2023, and will remain in effect until such time as conditions allow for safe use of the public lands.

**FOR FURTHER INFORMATION CONTACT:** Valerie Lenhartzen, Myrtlewood Field Manager, 1300 Airport Lane, North Bend, OR 97459, telephone (458) 280-0801. This notice and the closure notice is also available online at <https://www.blm.gov/programs/public-safety-and-fire/fire-and-aviation/regional-info/oregon-washington/fire-restrictions>.

**DISCUSSION OF THE RULES:** The public must not enter the closure area. All public uses within the closure area are prohibited. Exceptions to these prohibitions are noted below under Exemptions. Incidents of extreme fire behavior and extreme fire danger have been observed in the area. You must not enter closed recreation sites.

**EXEMPTIONS:** The following persons are exempt from the provisions of this Order:

1. Any Federal, State, or Local Officer, or member of an organized medical, rescue or firefighting force engaged in fire, emergency, or law enforcement activities, or public utility employees engaged in emergency repairs;
2. BLM employees, contractors, or agents engaged in official duties;

3. Individuals operating within the scope of their official and legitimate governmental duties;
4. Individuals with valid existing rights for access (e.g., Reciprocal and Unilateral Right of Way agreement holders, permittees or lease holders, or internal landowners); and
5. Parties who carry written approval by the BLM Authorized Officer (Field Manager or District Manager) allowing access to the described public lands.

**PENALTIES:** Any person who violates this may be tried before a United States Magistrate and fined in accordance with 18 U.S.C. 3571, imprisoned for no more than 12 months, or both. Vehicles found in violation of this order may be removed.

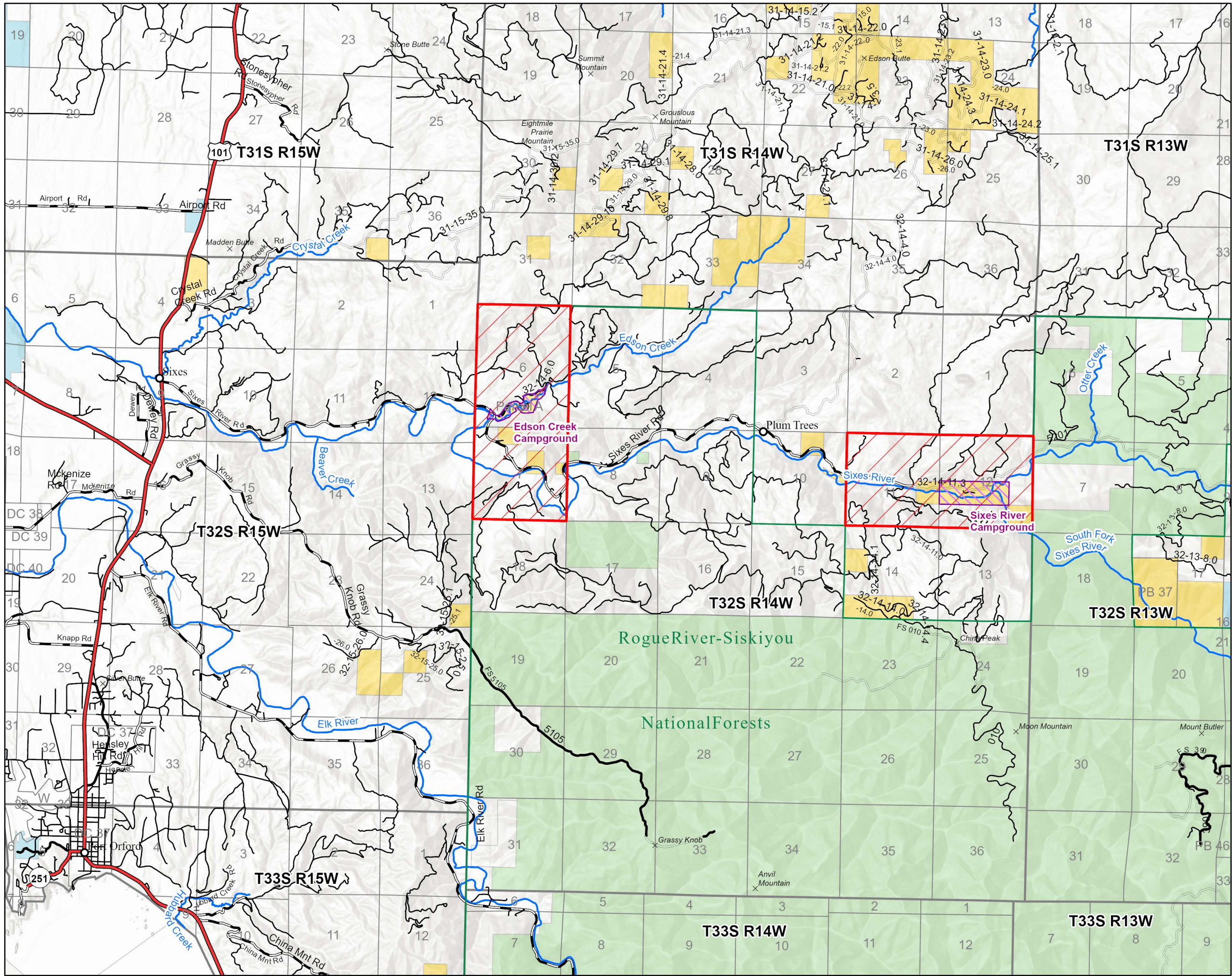
**EFFECTIVE:** This Order will be effective as of 5:00pm Pacific Daylight Time on September 14, 2023.

**STEVEN LYDICK** Digitally signed by STEVEN  
LYDICK  
Date: 2023.09.14 10:59:07 -07'00'

Steven D Lydick, District Manager, Coos Bay District

# Emergency Closure of Bureau of Land Management Managed Lands

As of 9/14/2023



- Area Closure
- Highway
- County Road
- Paved Road
- Gravel Road
- Natural/Unk Surface Road
- Perennial
- National Forest Boundary
- BLM Campgrounds
- State
- BLM
- USFS
- USFWS
- Private or Unknown



United States Department of the Interior  
 Bureau of Land Management  
 Coos Bay District Office  
 1300 Airport Lane  
 North Bend, OR 97459  
 Phone: 541-756-0100  
 Fax: 541-751-4303  
 email: [BLM\\_OR\\_CB\\_Mail@blm.gov](mailto:BLM_OR_CB_Mail@blm.gov)  
 website: [www.blm.gov/oregon-washington](http://www.blm.gov/oregon-washington)



Scale: 1:63,360 or 1" = 1 mile  
 NAD 1983 UTM Zone 10N  
 Central Meridian -123.0000  
 Longitude West from Greenwich, England

No warranty is made by the Bureau of Land Management as to the accuracy, reliability, or completeness of these data for individual or aggregate use with other data. Original data were compiled from various sources and may be updated without notification.