



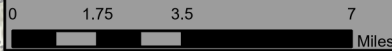
# Information

Smith River Complex North

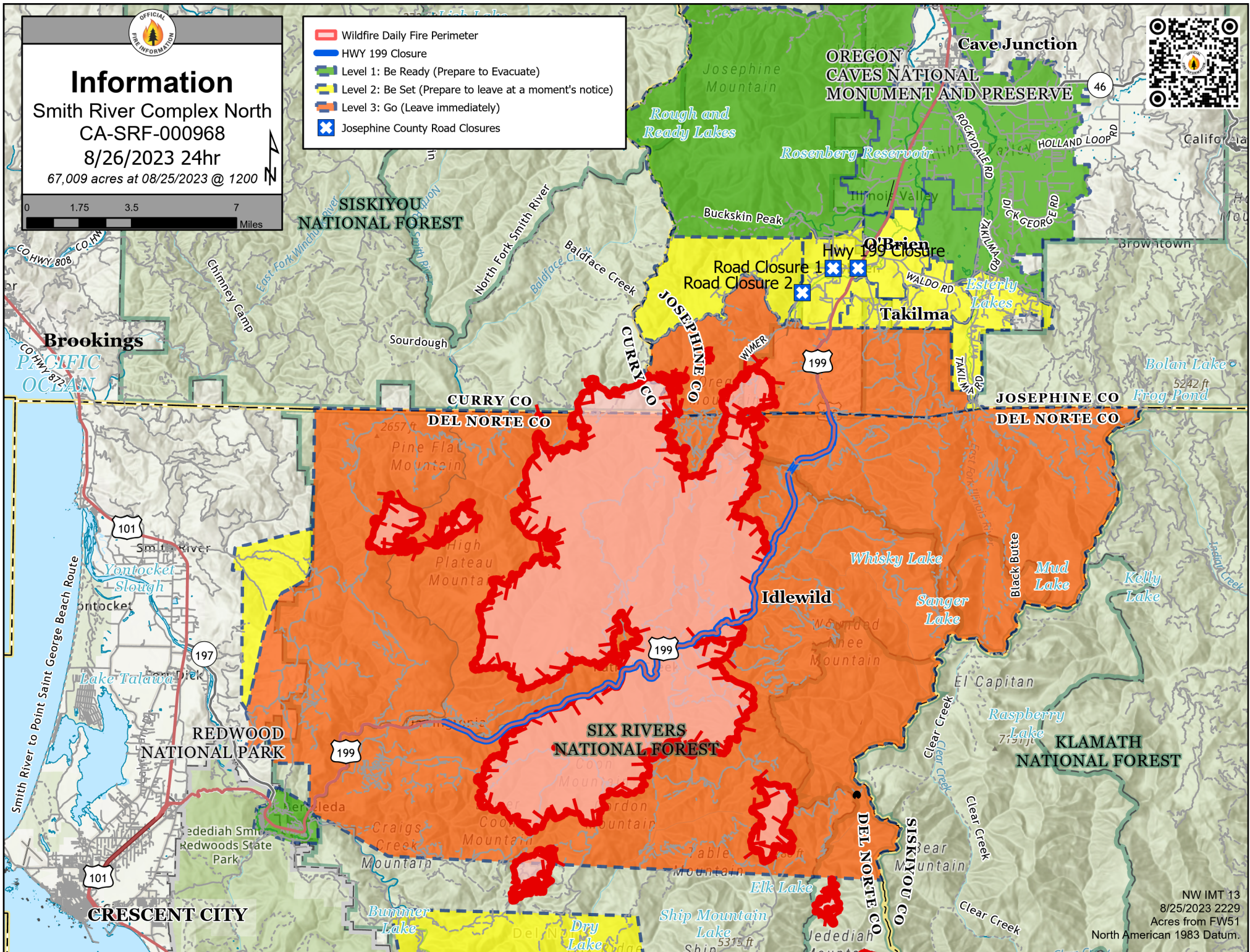
CA-SRF-000968

8/26/2023 24hr

67,009 acres at 08/25/2023 @ 1200



- Wildfire Daily Fire Perimeter
- HWY 199 Closure
- Level 1: Be Ready (Prepare to Evacuate)
- Level 2: Be Set (Prepare to leave at a moment's notice)
- Level 3: Go (Leave immediately)
- Josephine County Road Closures



NW IMT 13  
8/25/2023 2229  
Acres from FW51  
North American 1983 Datum.