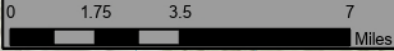




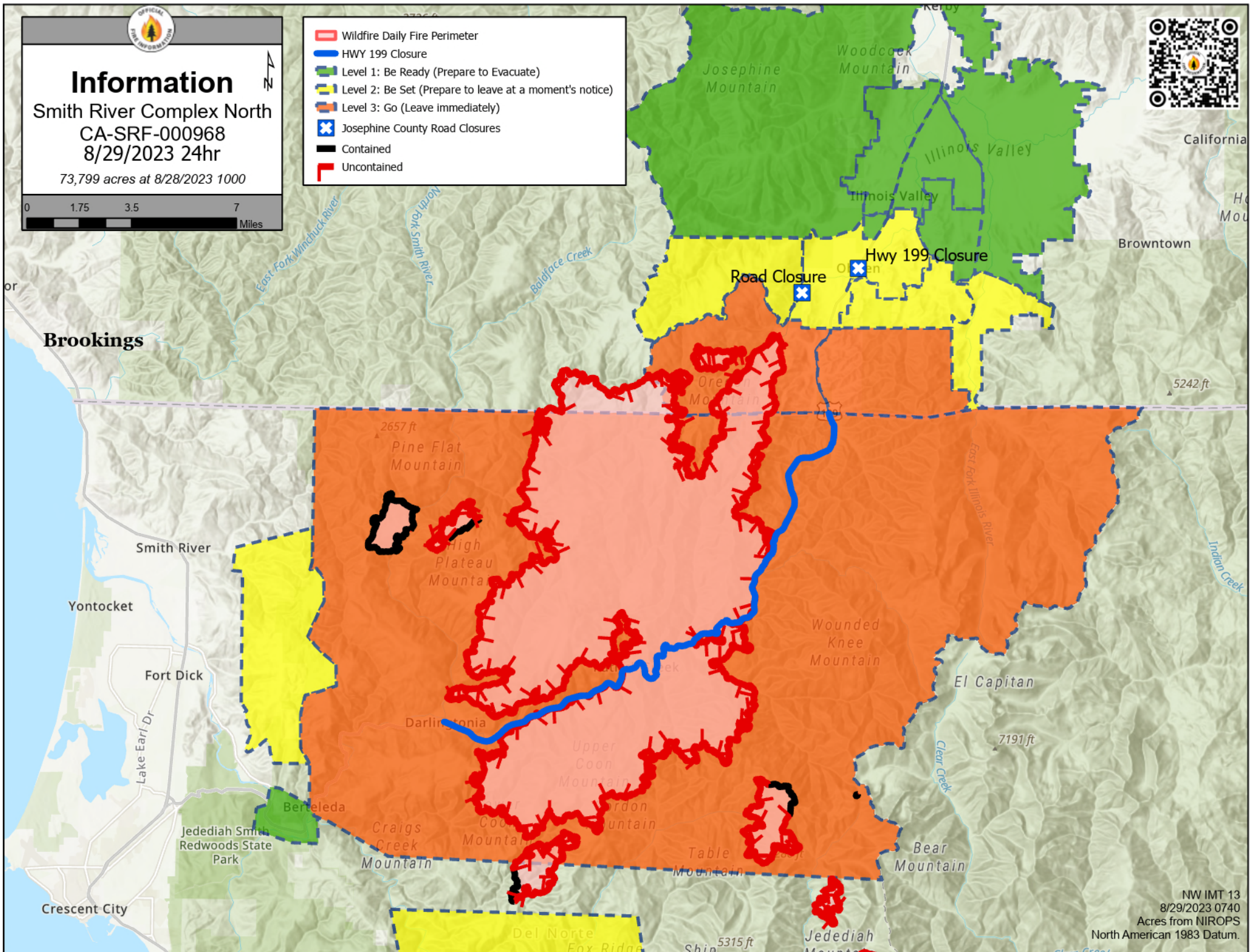
# Information

Smith River Complex North  
CA-SRF-000968  
8/29/2023 24hr

73,799 acres at 8/28/2023 1000



- Wildfire Daily Fire Perimeter
- HWY 199 Closure
- Level 1: Be Ready (Prepare to Evacuate)
- Level 2: Be Set (Prepare to leave at a moment's notice)
- Level 3: Go (Leave immediately)
- Josephine County Road Closures
- Contained
- Uncontained



NW IMT 13  
8/29/2023 0740  
Acres from NIROPS  
North American 1983 Datum.