

**DELTA AREA FIRES
DIVISION OF FORESTRY
& FIRE PROTECTION**
MAP PUBLISHED ON 8/13/2023

MAJOR FIRES LAST ESTIMATED ACRES

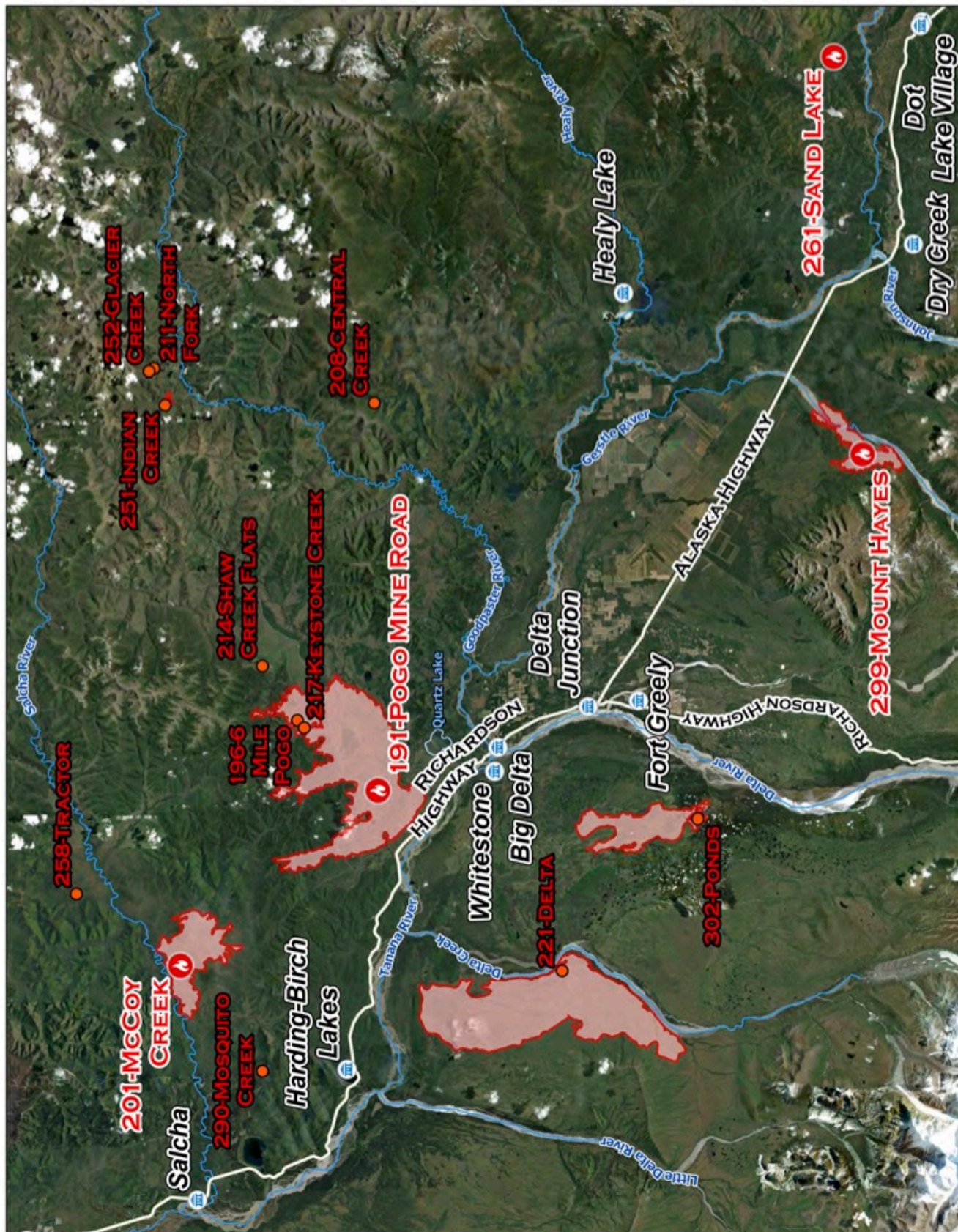
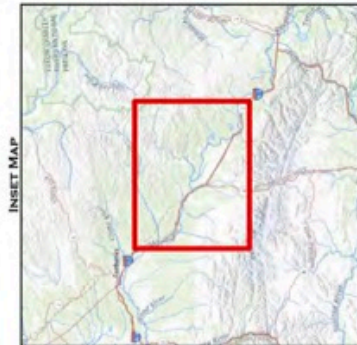
- 221-DELTA: 54,255 AC
- 191-POGO MINE ROAD: 47,137 AC
- 201-MCCOY CREEK: 14,060 AC
- 302-PONDS: 12,217 AC
- 299-MOUNT HAYES: 7,085 AC
- 196-6 MILE POGO: 4,748 AC

COMMUNITIES

- ROADS
- RIVERS

CURRENT FIRES

- ACTIVE (STAFFED / UNCONTAINED)
- ACTIVE (UNSTAFFED / UNCONTAINED)
- WILDFIRE DAILY FIRE PERIMETER



MAP DIVISION BY G. BUCKNER, COURTESY: \COMMISSIONER WALTER MULLOY AND ASSISTANT COMMISSIONER VANCE WOODS. PHOTO COURTESY: ALASKA DEPARTMENT OF NATURAL RESOURCES