



Smoke Outlook

Central Idaho - Salmon Challis Hayden Fire

8/01 - 8/02

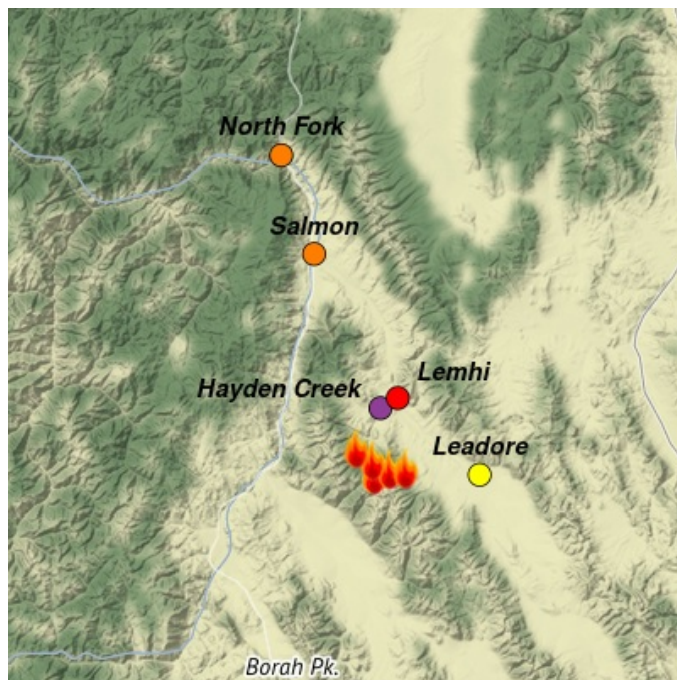
Issued by [Wildland Fire Air Quality Response Program](#) on August 01, 2023 at 07:55 AM MDT

Fire

Successful suppression operations over the last two days solidified containment lines and holding features. IR mapping has been unable to fly the last three nights; acres and containment will be updated once an updated perimeter is accessed. Today, hot, dry and windy conditions continue. Moderate fire behavior is expected. Suppression activities on all fronts will continue to improve containment and confinement. Smoldering, creeping, and consumption of interior pockets will continue. A push of monsoonal moisture with increased clouds, humidity, and the potential for rain moves on Wednesday. By Wednesday afternoon, cooler temperatures and the chance for precipitation increases, remaining through the weekend.

Smoke

Overnight, widespread smoke across the entire forecast region kept concentrations elevated. Drainage from the Elk Horn Fire moved into North Fork and Salmon, as drainage smoke from Hayden Fire pooled from Leadore to Lemhi and up to Salmon. Smoke will heavily impact areas in the immediate vicinity of the fire perimeter, along Hayden Creek and the foothills to HWY 28 at Lemhi. All locations will experience midday relief on Tuesday with warming temperatures and gusty winds. Wednesday through the weekend, wetting rain will clear out residual smoke; however, cooler temperatures and higher humidity could produce smoky/foggy conditions in low lying areas near the fire perimeter. New smoke production will be dispersed and hang closer to the surface with cooler conditions.



Daily AQI Forecast* for Tuesday

Station	Yesterday hourly	Mon 7/31	Comment for Today -- Tue, Aug 01	Forecast*	Tue 8/01	Wed 8/02
	6a noon 6p					
Salmon			Smoke from Elk Horn and Hayden Fires impacting overnight and early morning.			
North Fork			Elevated smoke overnight from the Elk Horn Fire.			
Hayden Creek			Intense smoke until late morning each day, clearing by late afternoon.			
Lemhi			Smoke impacts overnight, general light-to-moderate smoke midday into evening.			
Leadore			Intermittent smoke, higher impacts near the fire perimeter.			

Issued Aug 01, 2023 by A. Ortega, amber.ortega@usda.gov

Air Quality Index (AQI)	Actions to Protect Yourself
Good	None
Moderate	Unusually sensitive individuals should consider limiting prolonged or heavy exertion.
USG	People within Sensitive Groups* should reduce prolonged or heavy outdoor exertion.
Unhealthy	People within Sensitive Groups* should avoid all physical outdoor activity.
Very Unhealthy	Everyone should avoid prolonged or heavy exertion.
Hazardous	Everyone should avoid any outdoor activity.

***Disclaimer:** This forecast is based on fine particulates only; ozone is not included. Forecasts may be wrong; use at own risk. Use caution as conditions can change quickly. See your health professional as needed. Smoke sensitive groups should take appropriate precautions.

Additional Links

[Fire & Smoke Map](https://fire.airnow.gov/) -- <https://fire.airnow.gov/>

[Idaho Dept. of Environmental Quality](https://www.deq.idaho.gov/air-quality/) -- <https://www.deq.idaho.gov/air-quality/>

[Hayden Fire Information](https://inciweb.nwcg.gov/incident-information/idscf-hayden-fire) -- <https://inciweb.nwcg.gov/incident-information/idscf-hayden-fire>

--



Issued by Interagency Wildland Fire Air Quality Response Program -- www.wildlandfiresmoke.net
Central Idaho - Salmon Challis Updates -- <https://outlooks.wildlandfiresmoke.net/outlook/35739c39>
*Smoke and Health Info -- www.airnow.gov/air-quality-and-health