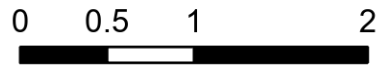


Public Information

Lowline
COGMF000176
8/1/2023

1,427 acres at 7/31/2023 @ 1404



Miles

) (Division Break

✕ Road Closure

— Contained

Wildfire Perimeter

□ Closure Area

TH Recreation Site

--- Trail

— Open Road

— County Road

State Lands

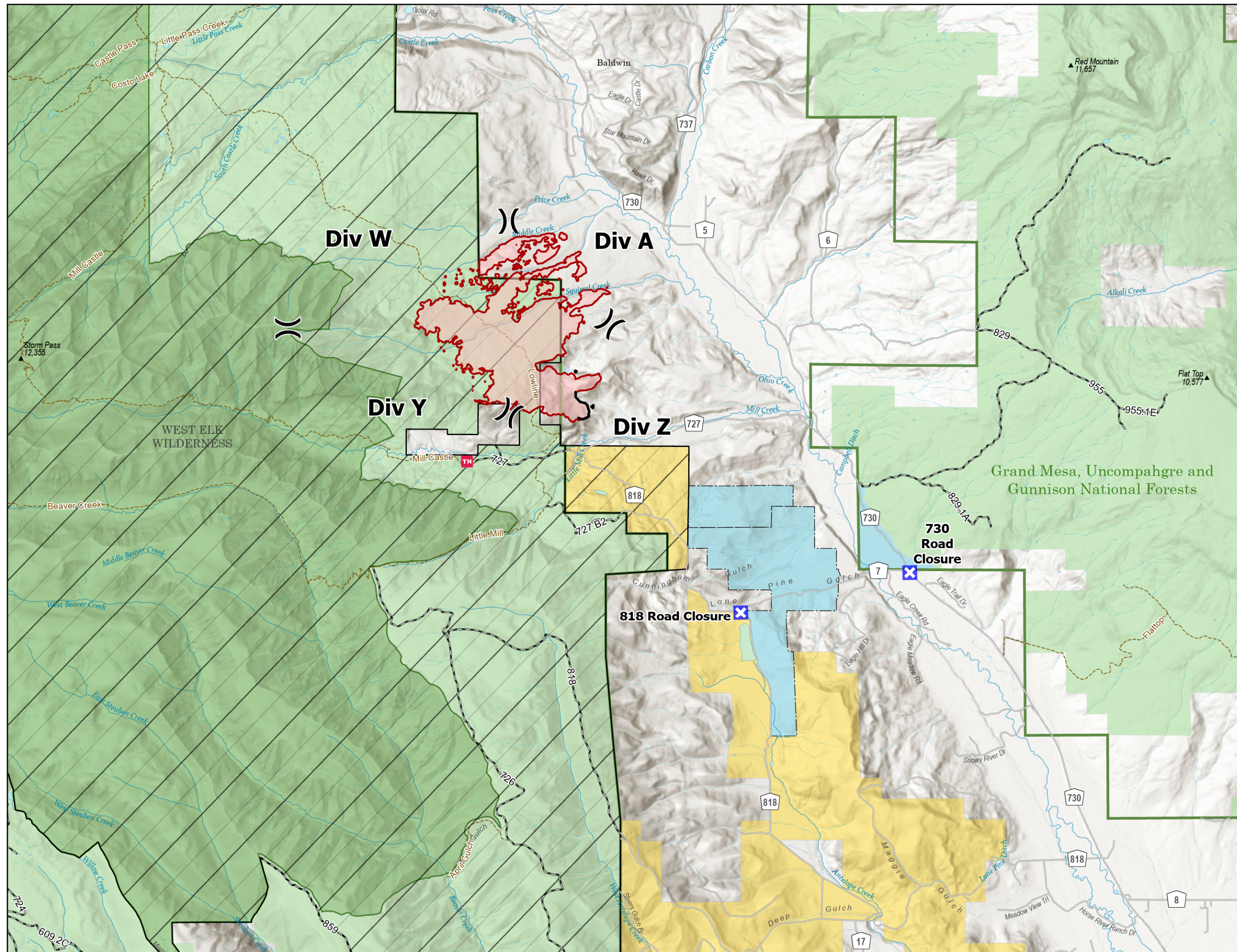
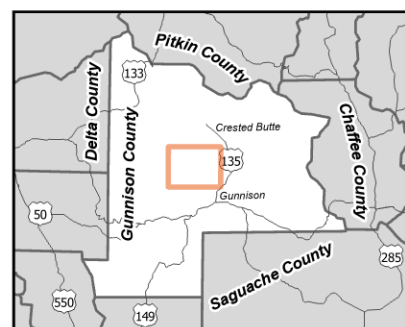
Bureau of Land Management Lands

Forest Service Land

FS Wilderness Boundary

USFS Boundary

For more information about the Forest Closure scan



Grand Mesa, Uncompahgre and Gunnison National Forests

730 Road Closure

818 Road Closure

Div W

Div A

Div Y

Div Z

WEST ELK WILDERNESS