

**DELTA AREA FIRES
DIVISION OF FORESTRY
& FIRE PROTECTION**
MAP PUBLISHED ON 8/14/2023

MAJOR FIRES LAST ESTIMATED ACRES

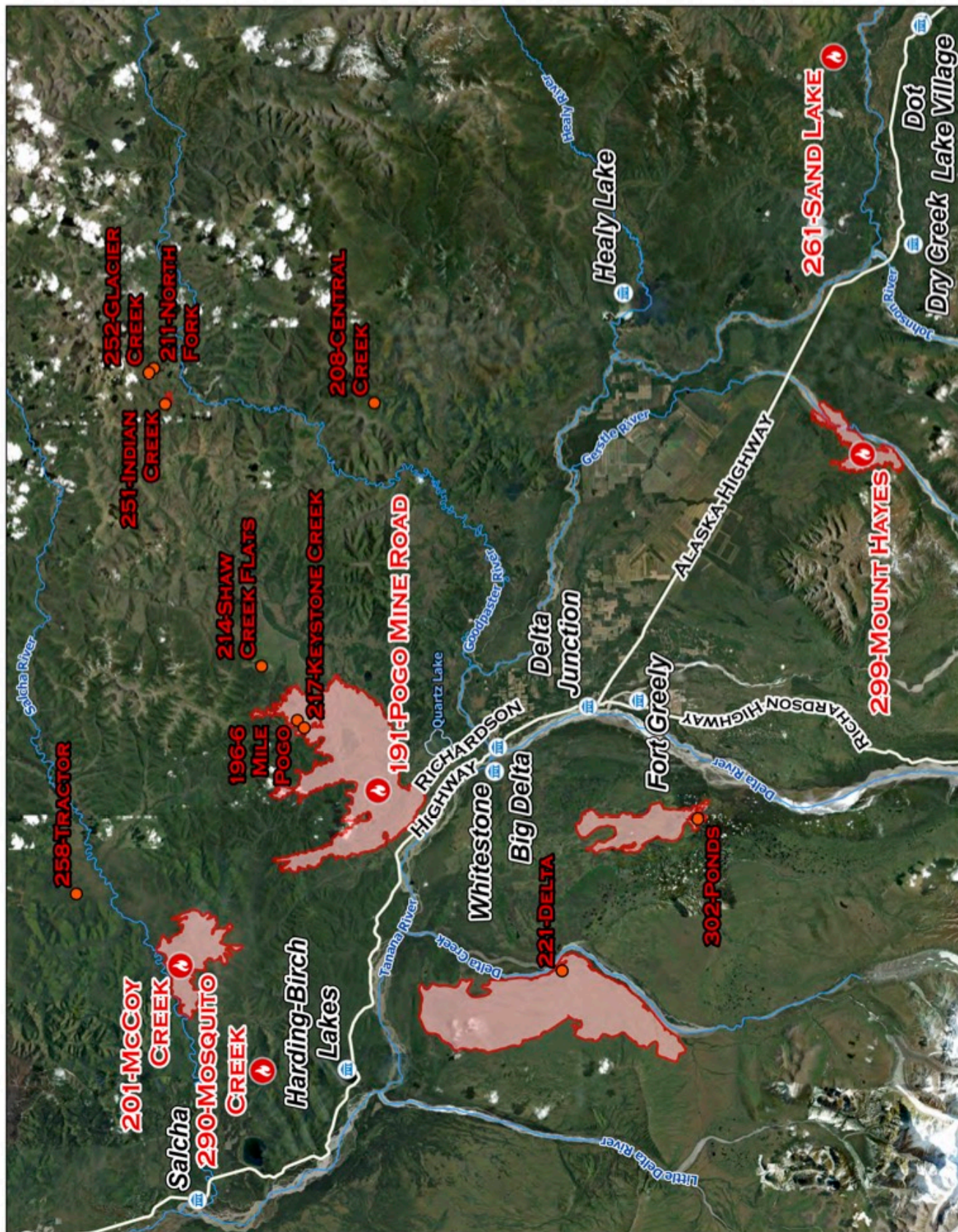
- 221-DELTA: 54,255 AC
- 191-POGO MINE ROAD: 47,179 AC
- 201-MCCOY CREEK: 14,060 AC
- 302-PONDS: 12,217 AC
- 299-MOUNT HAYES: 7,085 AC
- 196-6 MILE POGO: 4,748 AC

COMMUNITIES

- ROADS
- RIVERS

CURRENT FIRES

- ACTIVE (STAFFED / UNCONTAINED)
- ACTIVE (UNSTAFFED / UNCONTAINED)
- WILDFIRE DAILY FIRE PERIMETER



MAP PROVIDED BY CALIBRECK CONSULTING | COMMUNITIES AND LOCATIONS ARE APPROXIMATE. FIRE PERIMETERS AND CURRENT FIRES ARE APPROXIMATE. DATA SOURCES: CALIBRECK CONSULTING