

**DELTA AREA FIRES
DIVISION OF FORESTRY
& FIRE PROTECTION**
MAP PUBLISHED ON 8/11/2023

MAJOR FIRES LAST ESTIMATED ACRES
 221-DELTA: 46,612 AC
 191-POGO MINE ROAD: 47,137 AC
 201-MCCOY CREEK: 13,402 AC
 302-PONDS: 9,163 AC
 299-MOUNT HAYES: 7,085 AC
 1966 MILE POGO: 4,748 AC

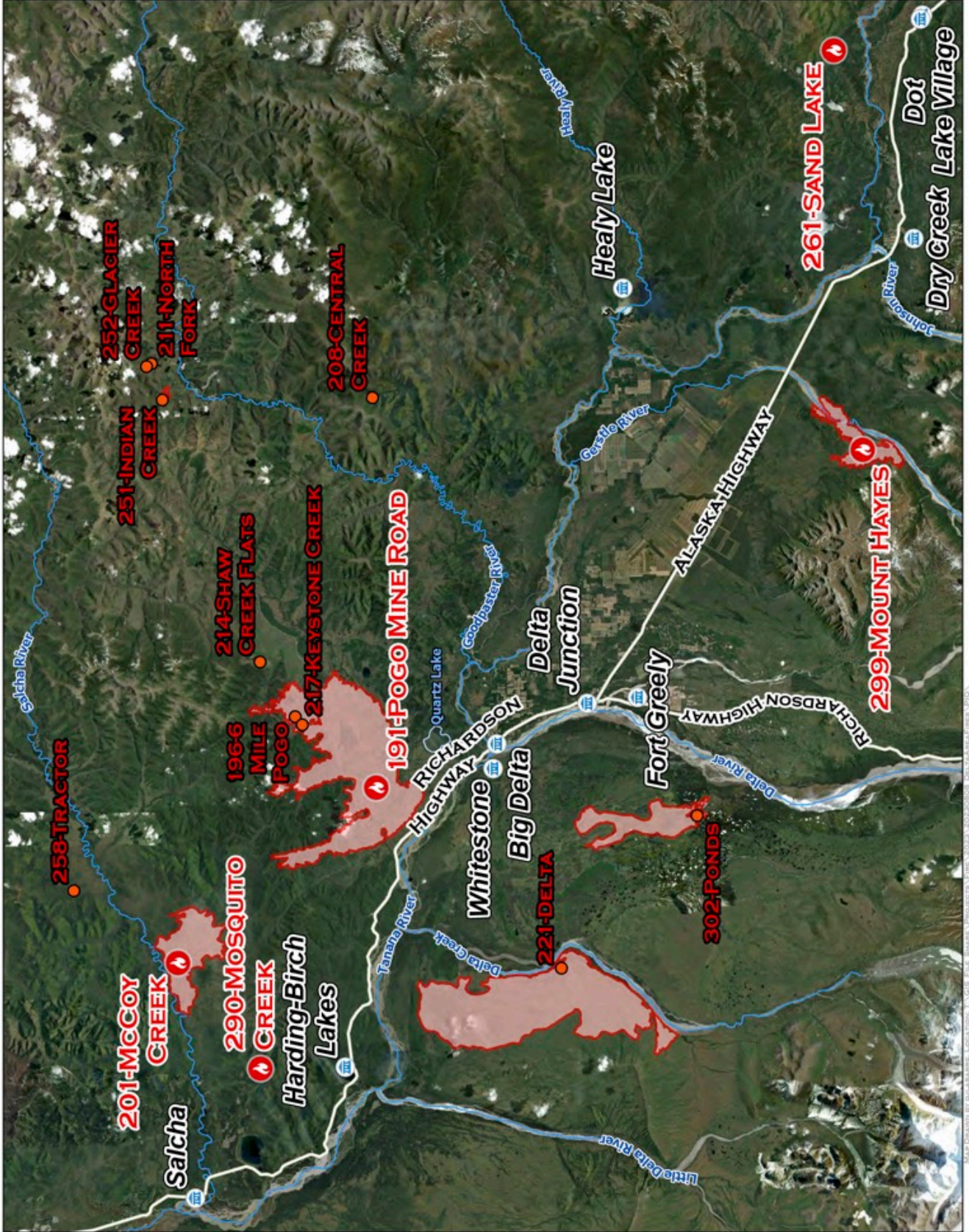
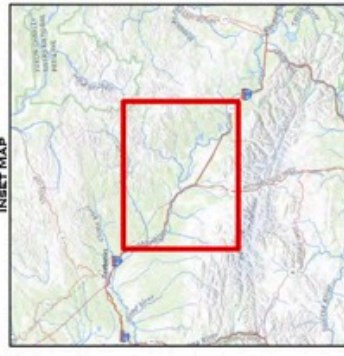
COMMUNITIES

ROADS

RIVERS

CURRENT FIRES

- ACTIVE (STAFFED / UNCONTAINED)
- ACTIVE (UNSTAFFED / UNCONTAINED)
- WILDFIRE DAILY FIRE PERIMETER



MAP DRAWN BY: SOUTHWESTERN ELECTRONICS CORPORATION | COORDINATES: T10G17, T10E, S64N001 | PHOTOGRAPHY: © 2023 ALASKA FORESTRY & FIRE PROTECTION