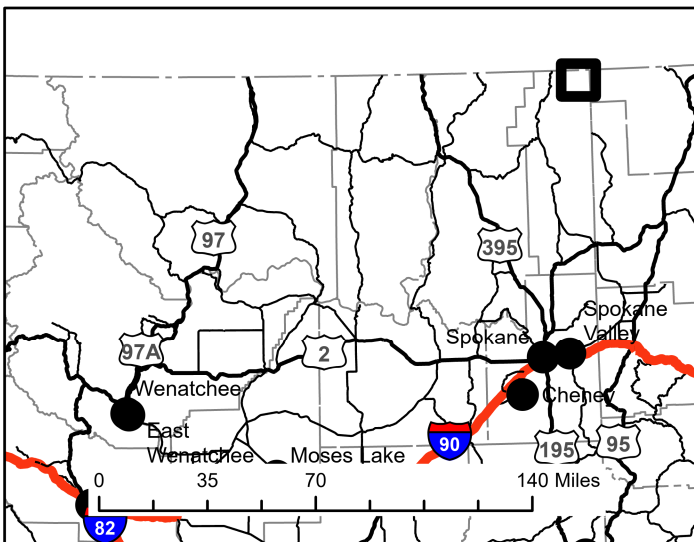
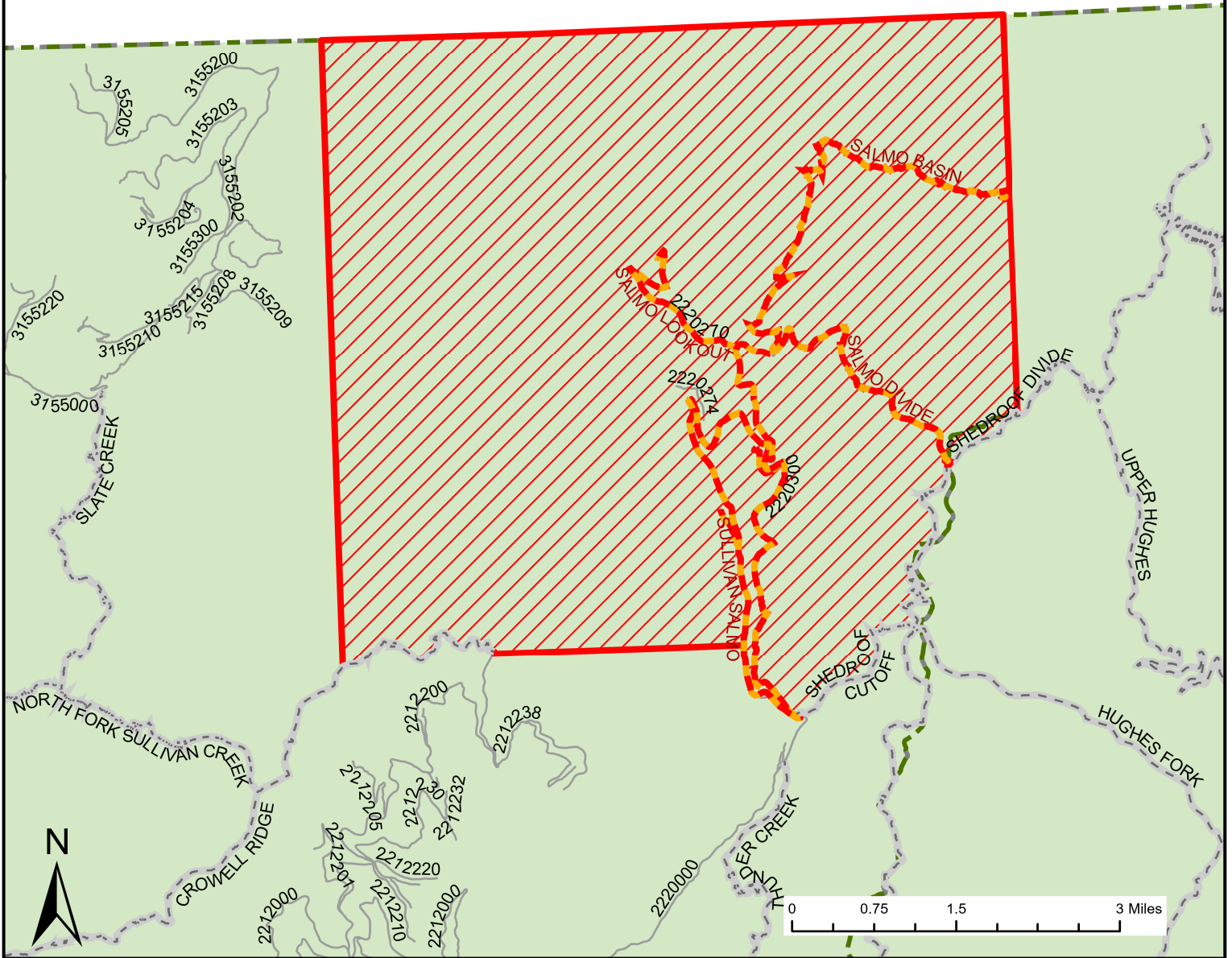






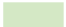
This product is reproduced from information prepared by the USDA, Forest Service or from other suppliers. The Forest Service cannot assure the reliability or suitability of this information for a particular purpose. The data and product accuracy may vary due to compilation from various sources, including modeling and interpretation, and may not meet National Map Accuracy Standards. This information may be updated, corrected or otherwise modified without notification.
 For more information contact: Colville National Forest Office at (509) 684-7000

The USDA is an equal opportunity provider and employer.



Salmo Basin Closure Exhibit A
Closure Number 06-21-35-23-04
Colville National Forest
(509) 684-7000

Legend

-  NFS Roads
-  Area Closure
-  Open Trails
-  County Boundary
-  Road/Trail Closure
-  National Forest Land



Date: 8/6/2023