

R. 3 E.

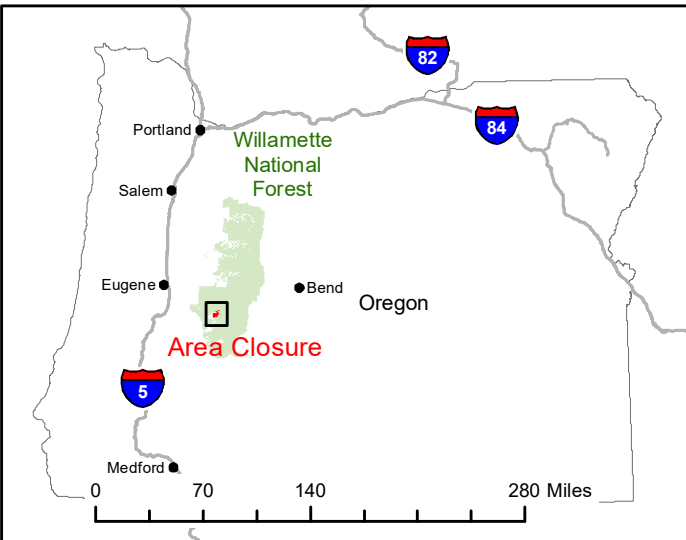
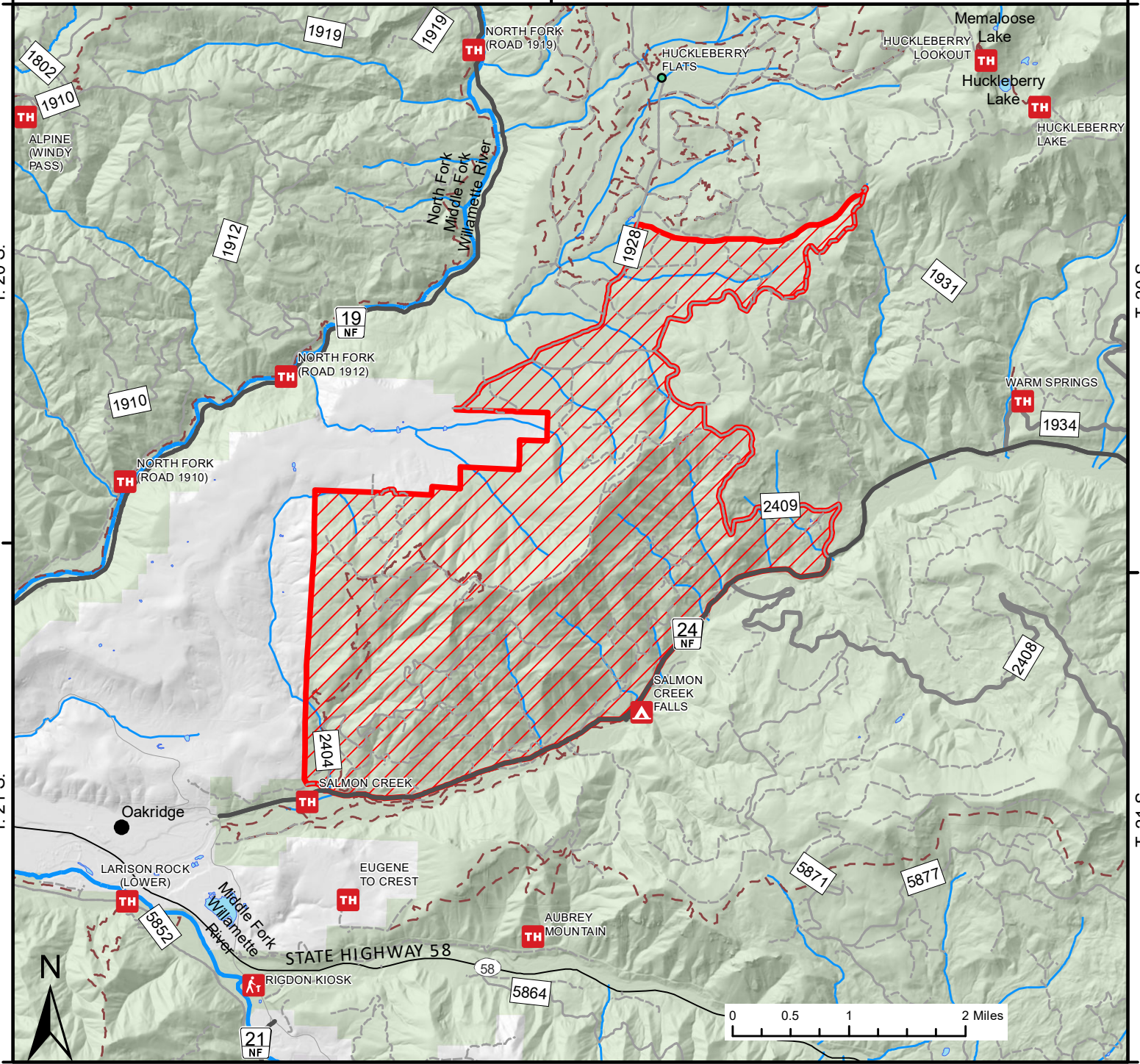
R. 4 E.

T. 20 S.









T. 20 S.

T. 21 S.

T. 21 S.



Salmon Fire Closure Exhibit A
Closure Number 06-18-10-23-16
Willamette National Forest 541-225-6300

-  Area Closure
-  Trails
-  Paved Road
-  Gravel/Dirt Road, Suitable for Passenger Car
-  Road, Not Maintained for Passenger Car
-  USFS Admin Boundary
-  National Forest Land
-  Wilderness

