



**UNITED STATES DEPARTMENT OF AGRICULTURE  
FOREST SERVICE  
KAIBAB NATIONAL FOREST  
NORTH KAIBAB RANGER DISTRICT  
Emergency Area Closure**

**EMERGENCY AREA CLOSURE**

Pursuant to 16 U.S.C. § 551 and 36 C.F.R. § 261.50 (a), the following acts are prohibited on National Forest System (NFS) lands in the North Kaibab Ranger District of the Kaibab National Forest, described below and shown on the attached map incorporated into this Order as Exhibit A (“Described Area”).

**PROHIBITIONS**

1.) Entering or being within the Described Area. 36 C.F.R. § 261.52(e).

**EXEMPTIONS**

Pursuant to 36 C.F.R. § 261.50 (e), the following persons are exempt from this Order:

- 1.) Any Federal, State, or local officer, or member of an organized rescue or firefighting force engaged in the performance of an official duty.
- 2.) Persons with Forest Service Permit No. FS-7700-48 (Permit for Use of Roads, Trails, or Areas Restricted by Regulation or Order), specifically exempting them from this Order or a written determination by a Forest Service authorized officer that a permit is not required under 36 C.F.R. § 251.50(e)(1) or (2).

**DESCRIBED AREA**

As depicted in Exhibit A, all National Forest System lands within the boundary starting at the intersection of State Route 67 and NFSR 205, proceeding east along NFSR 205 to the intersection with NFSR 224, proceeding east along NFSR 224 to the intersection with NFSR 284, proceeding north on NFSR 284 to the intersection with 284C, proceeding north along NFSR 284C to the intersection with BLM-D226, proceeding east along BLM-D226 to the intersection with BLM-D249, proceeding south along BLM-D249 to the intersection with BLM-8910, proceeding southwest along BLM-8910 to the intersection with NFSR 287, proceeding west along NFSR 287 to the intersection of NFSR 220, proceeding south along NFSR 220 to the intersection with NFSR 213, proceeding southwest along NFSR 213 to the intersection with

NFSR 509, proceeding west on NFSR 509 to the intersection with NFSR 487, proceeding northwest on NFSR 487 to the intersection with SR 67, proceeding north along SR 67 back to the point of beginning at the intersection of SR 67 and NFSR 205.

## **PURPOSE**

The purpose of this Order is to provide for the public's health and safety due to the Kane Fire.

## **IMPLEMENTATION**

- 1.) This Order will be in effect beginning at 6:00 AM on August 8, 2023, and shall remain in effect until September 30, 2023, or until rescinded, whichever comes first.
- 2.) A map identifying the Described Area, Roads, and Trails is attached and made part of this Order as Exhibit A. For a digital version of this Order and Exhibit A, go to [Kaibab National Forest - Alerts & Notices \(usda.gov\)](https://www.usda.gov/land-management/kaibab-national-forest/alerts-notice)
- 3.) Unless otherwise expressly defined in this Order, the terms used in this Order are defined by the regulations of the Secretary of Agriculture, 36 C.F.R. Chapter II, Parts 200-299. If there are terms in this Order that are not expressly defined in the Order or 36 C.F.R. Chapter II, Parts 200-299, their meaning shall be determined by their plain language definitions.
- 4.) A violation of the above prohibitions is punishable as a Class B misdemeanor by a fine of not more than \$5,000 for individuals and \$10,000 for organizations, or by imprisonment for not more than six months, or both. 16 U.S.C. § 551; 18 U.S.C. §§ 3559, 3571, and 3581.
- 5.) Contact the North Kaibab Ranger District at (928) 643-7395, and the Kaibab National Forest Supervisor's Office in Williams, AZ at (928) 635-8200, for more information about this Order.
- 6.) This Order supersedes any previous Orders prohibiting the same or similar acts in/on the same Described Area, Roads, and Trails.

Done at Williams, Arizona this 9th day of August 2023.

---

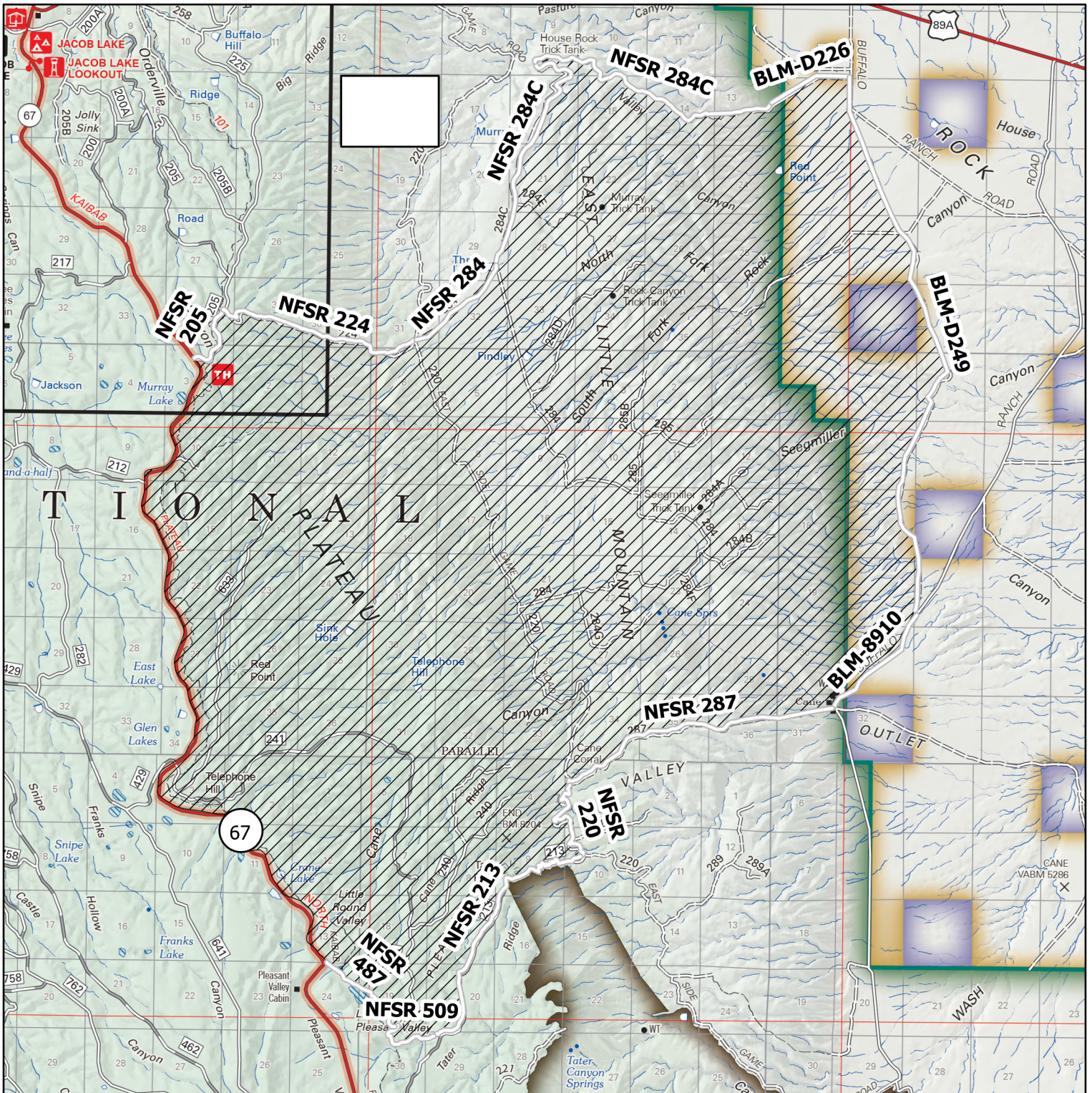
Nicole Branton  
Forest Supervisor, Kaibab National Forest



# Kane Fire Safety Closure

Order Number: 03-07-23-06

## Kaibab National Forest - North Kaibab Ranger District



### Disclaimer

The USDA Forest Service uses the most current and complete data available. GIS data and product accuracy may vary. Using GIS products for purposes other than those for which they were intended may yield inaccurate or misleading results. The USDA Forest Service reserves the right to correct, update, modify, or replace GIS products without notification. This map is not a legal land line or ownership document. Public lands are subject to change and leasing, and may have access restrictions; check with local offices. Obtain permission before entering private land.

### Legend

 Kane Fire Closure Area

