

Public Information

Lowline
COGMF000176
7/30/2023

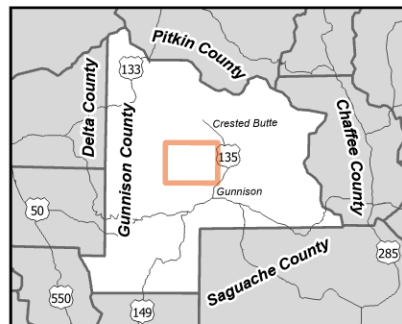
1,096 acres at 7/29/2023 @ 1527



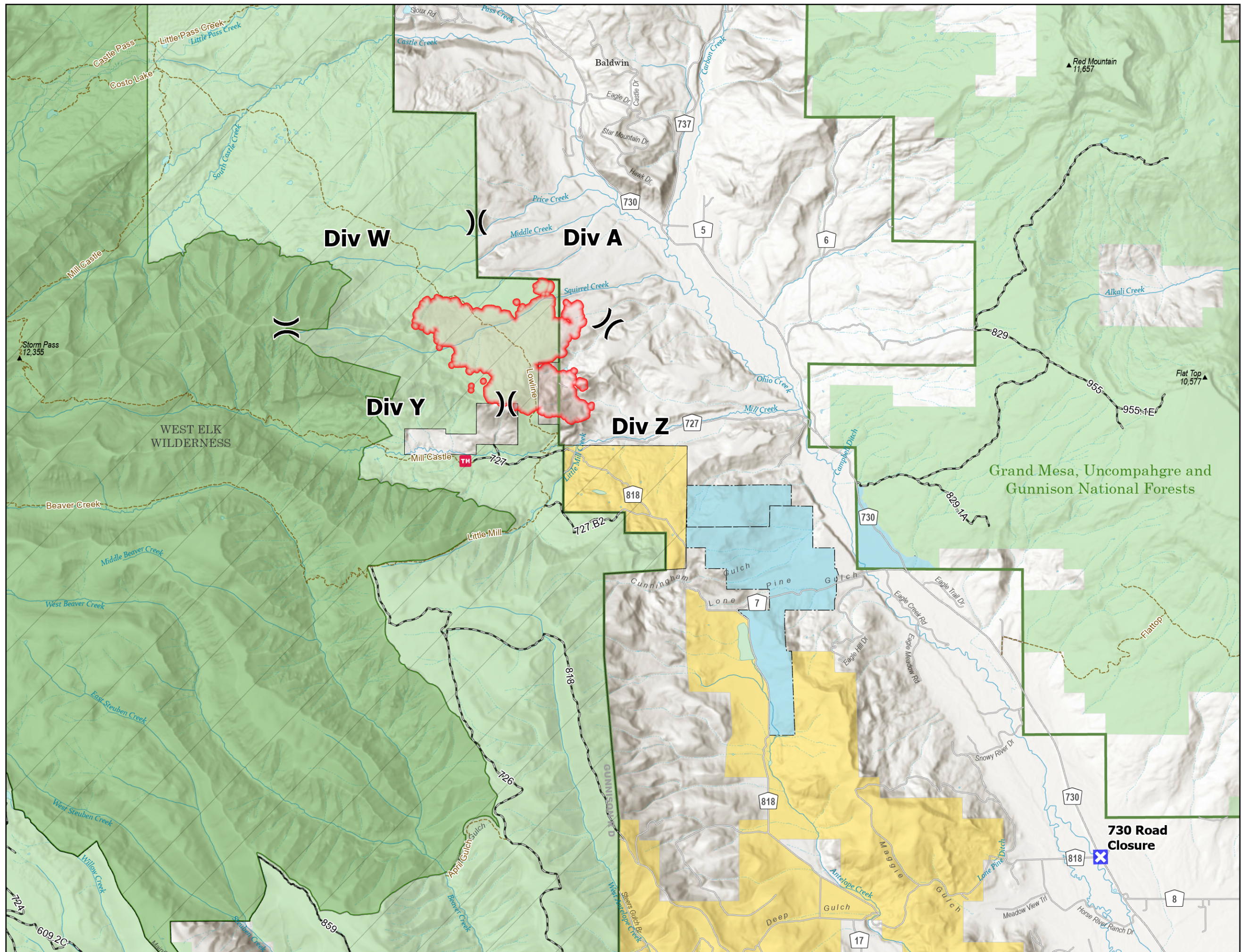
- Division Break
- Road Closure
- Wildfire Perimeter
- Closure Area

- Recreation Site
- Trail
- Open Road
- County Road
- State Lands
- Bureau of Land Management Lands
- Forest Service Land
- FS Wilderness Boundary
- USFS Boundary

For more information about the Forest Closure scan



7/29/2023 2246
Acres from IR & MMA
North American 1983 Datum.
Esri, NASA, NGA, USGS, FEMA



730 Road Closure